

UNIVERSIDAD POLITECNICA DE CATALUÑA

**ESCUELA TECNICA SUPERIOR DE INGENIEROS
INDUSTRIALES DE TERRASSA**

**ANALISIS DEL COMPORTAMIENTO DEL SUELO
RADIANTE POR CABLE ELECTRICO EN LA
CALEFACCION DE LOS EDIFICIOS
INDUSTRIALES**

Tesis Doctoral presentada por:
MONTSE SANCHEZ ROMERO
Ingeniero Industrial
por la E.T.S.I.I de Terrassa

Dirigida por:

PERE ALAVEDRA RIBOT
Dr. Ingeniero Industrial (U.P.C.)

Terrassa, Septiembre 1994

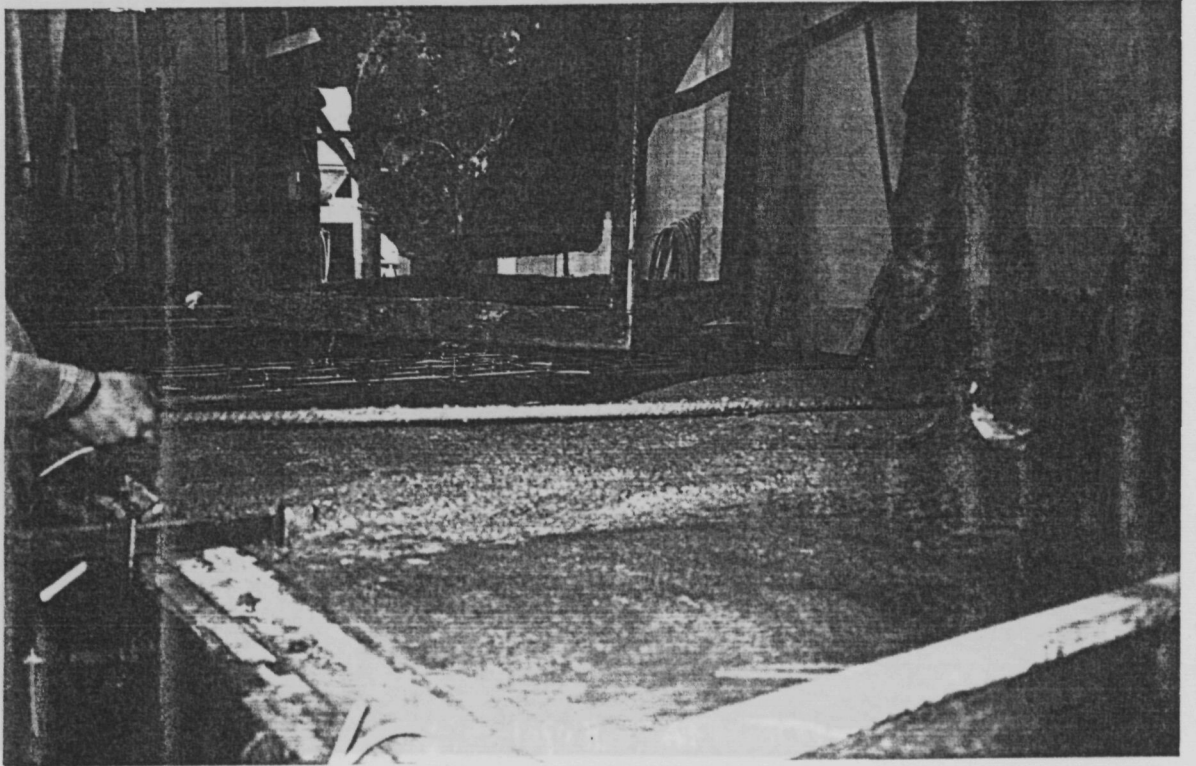
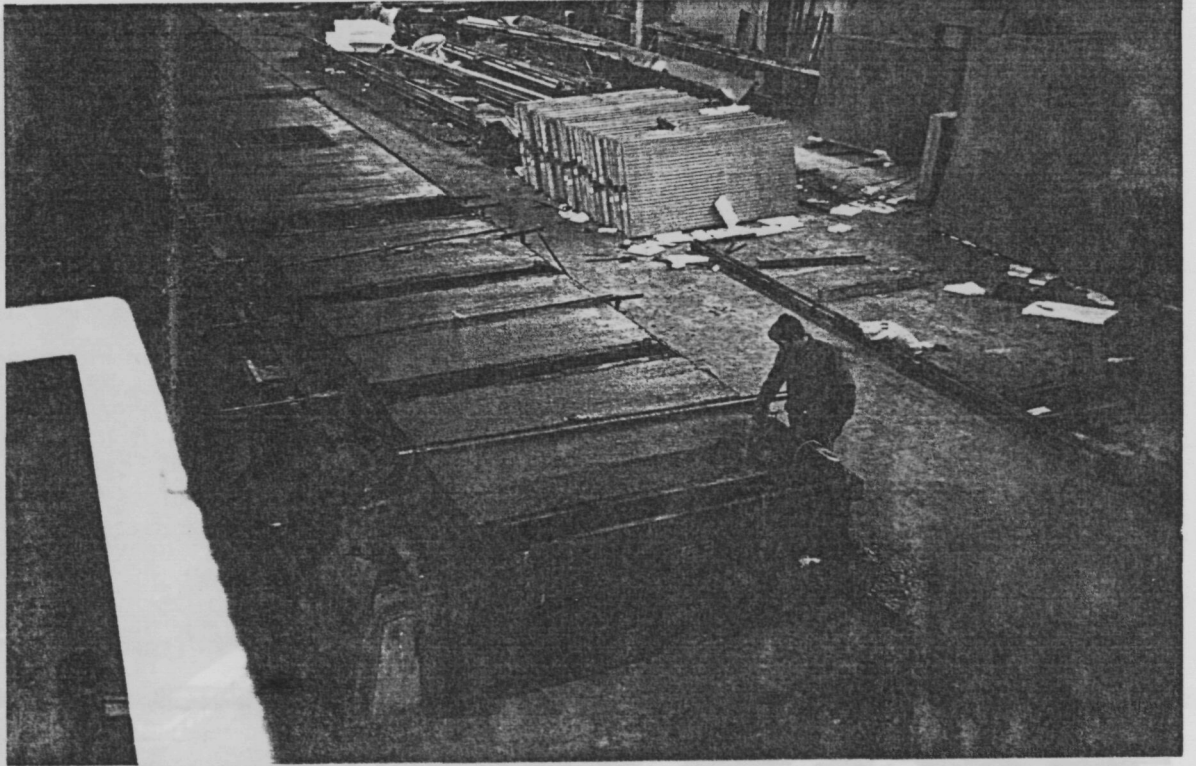


fig 8.9

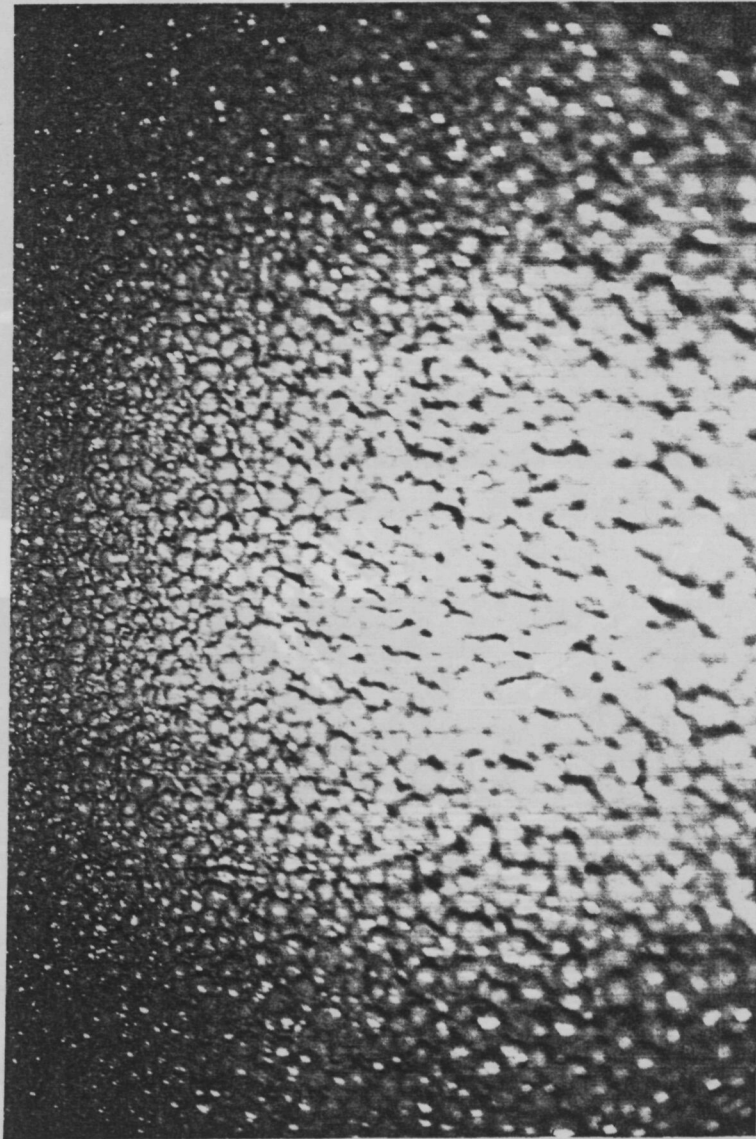


fig 8.10

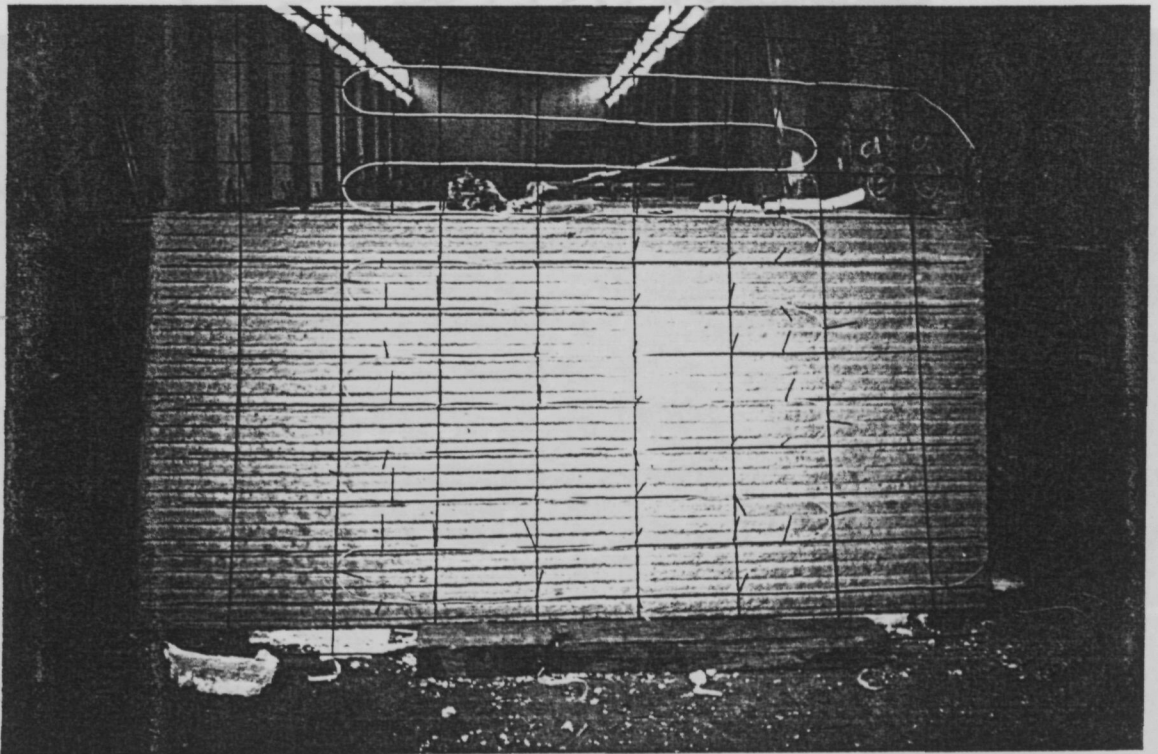


fig 8.11

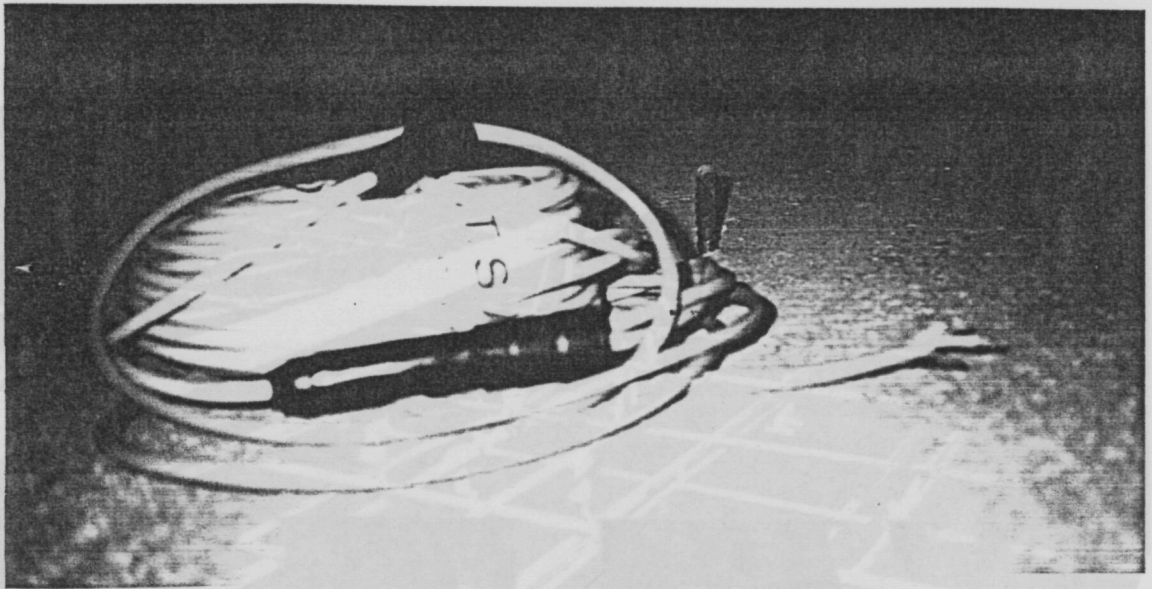


fig 8.11

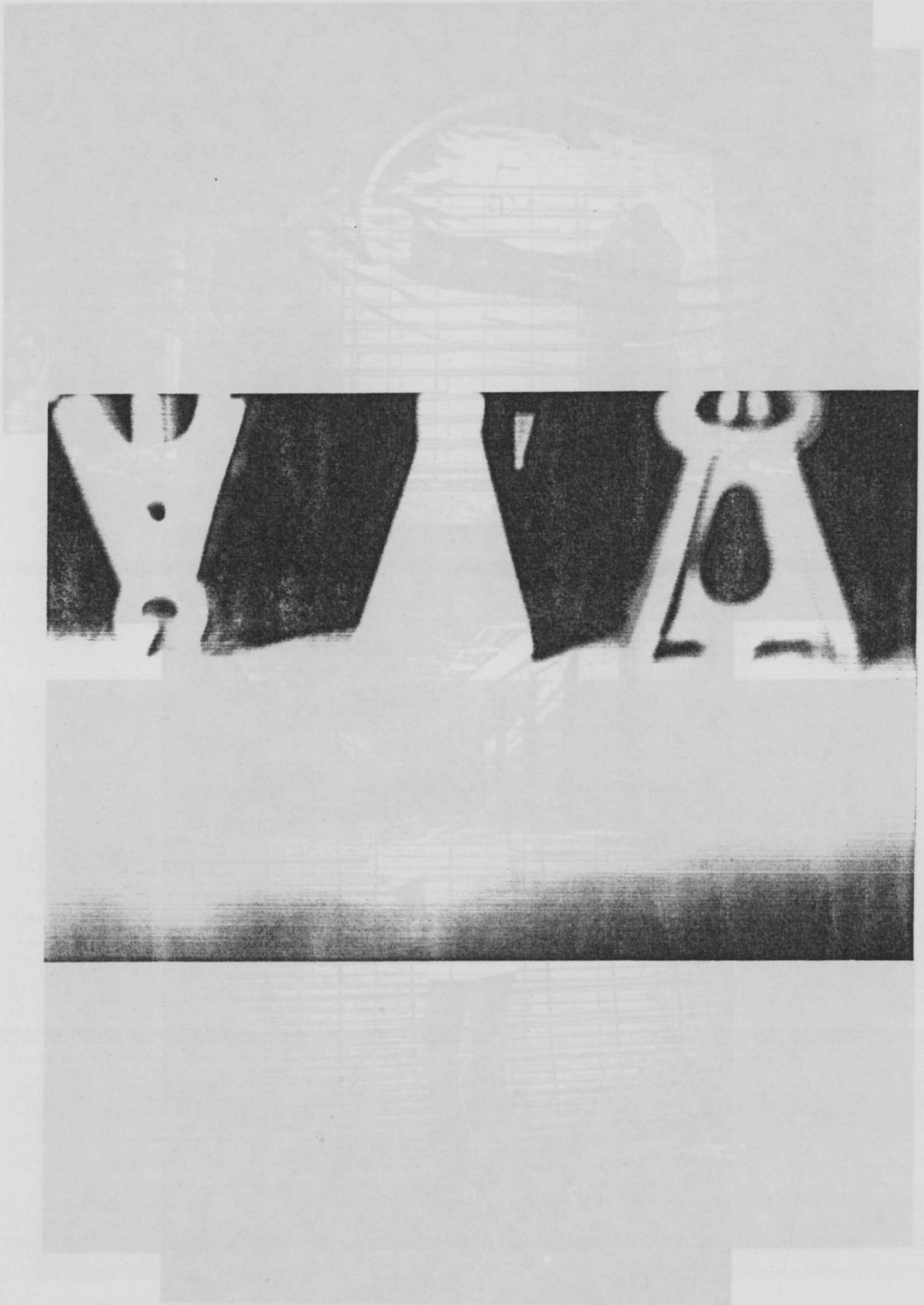


fig 8.12

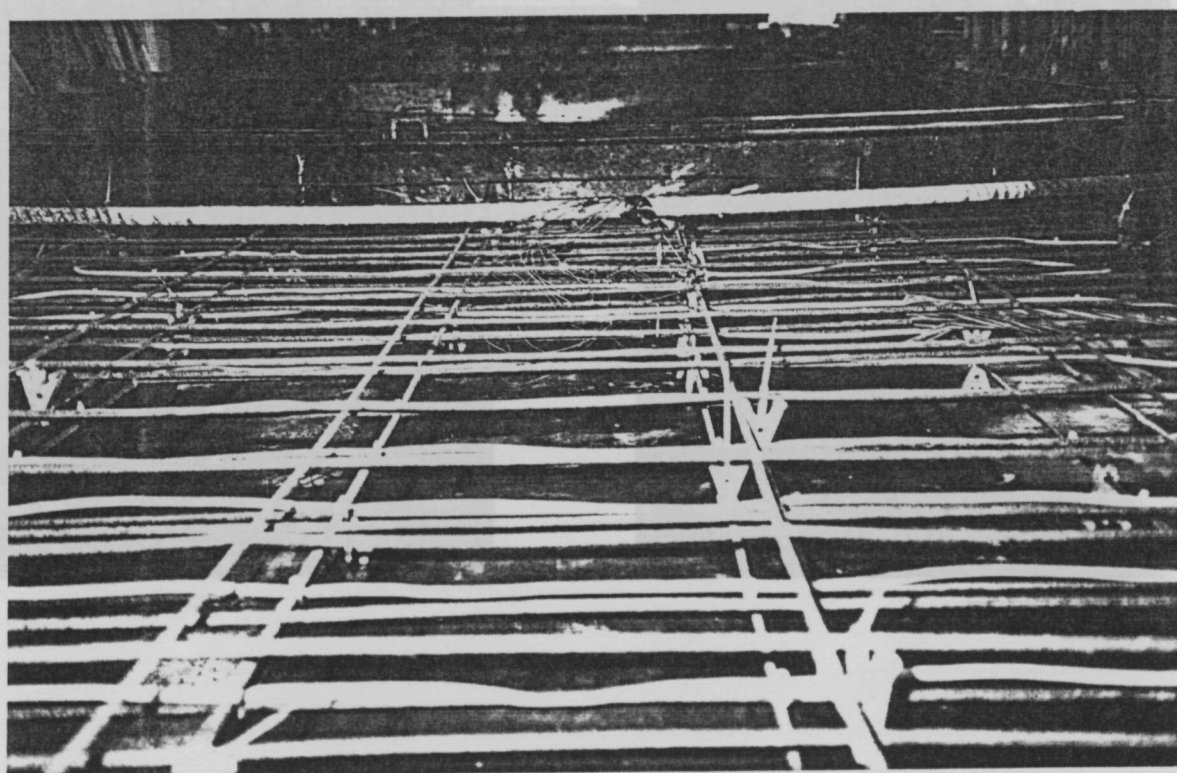
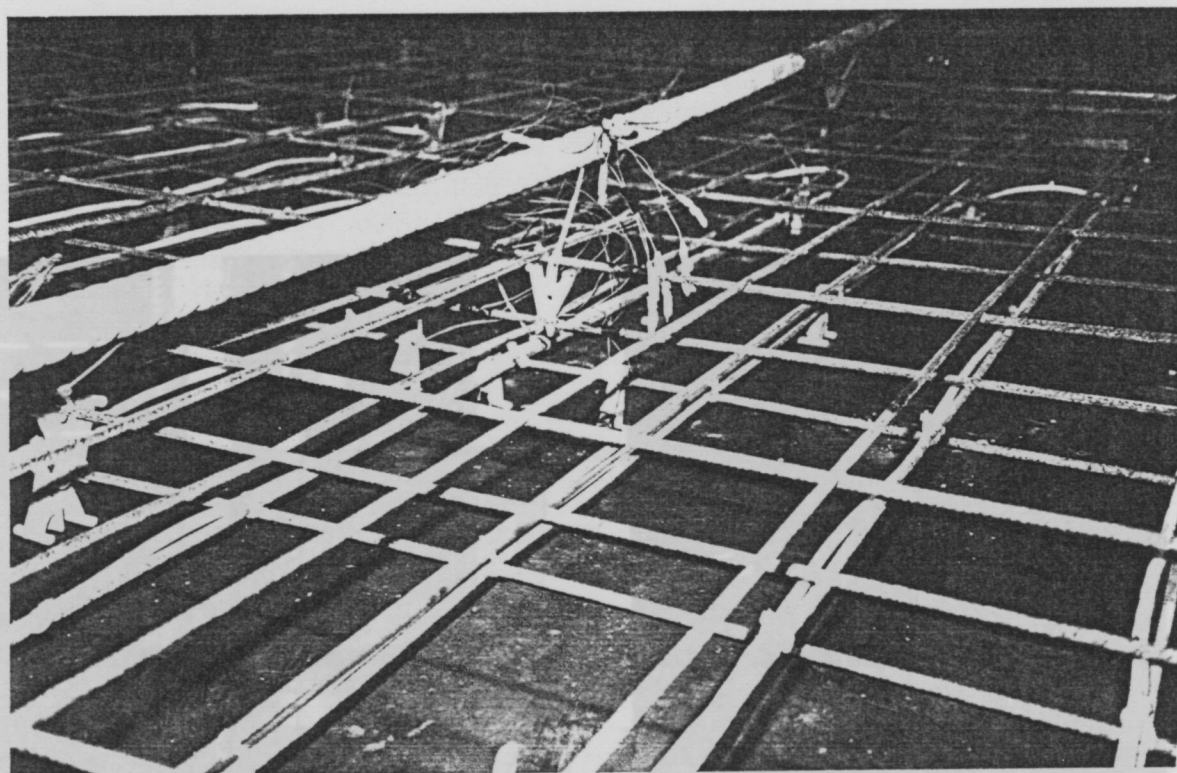


fig 8.13

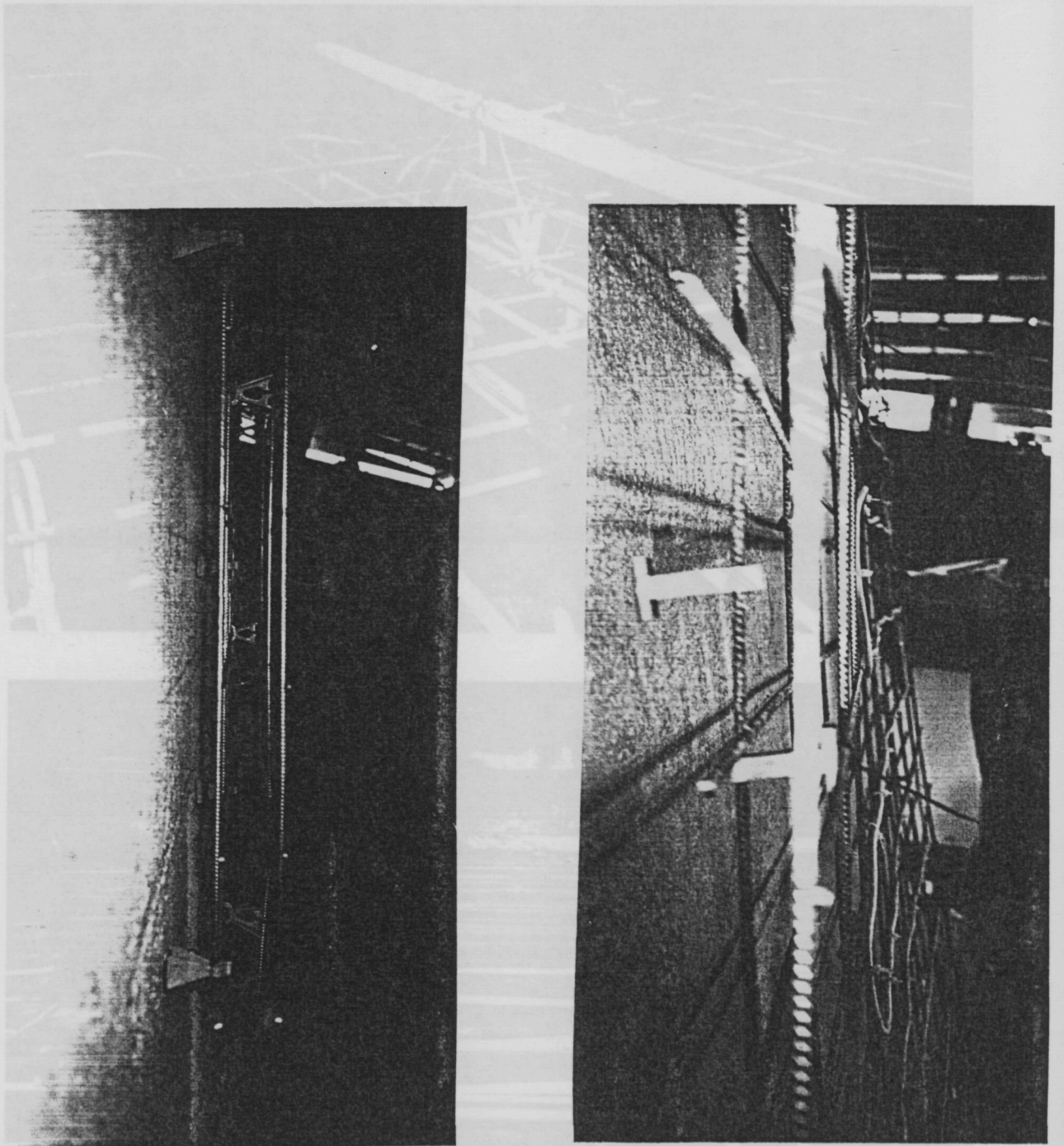


fig 8.13

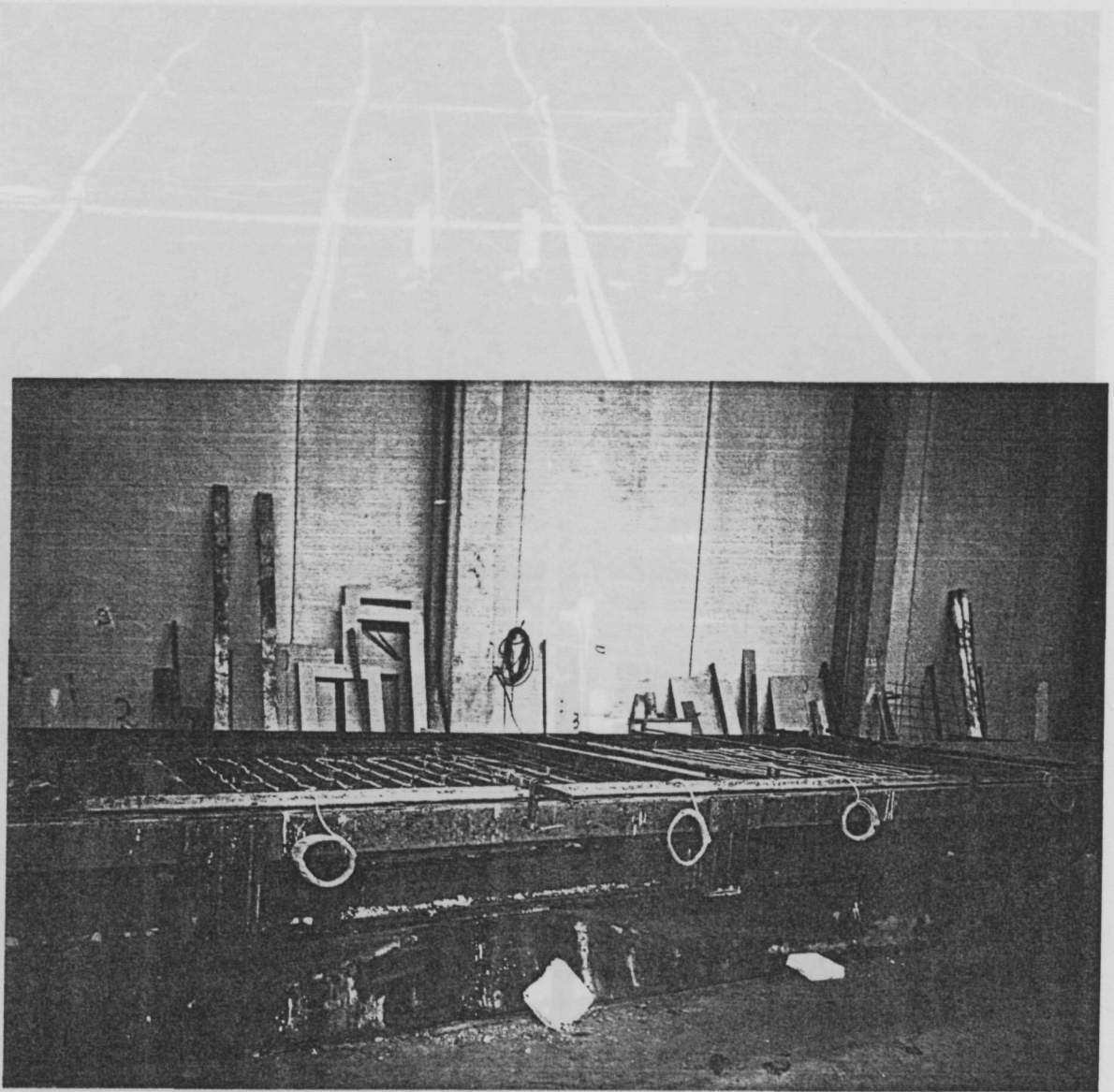


fig 8.14

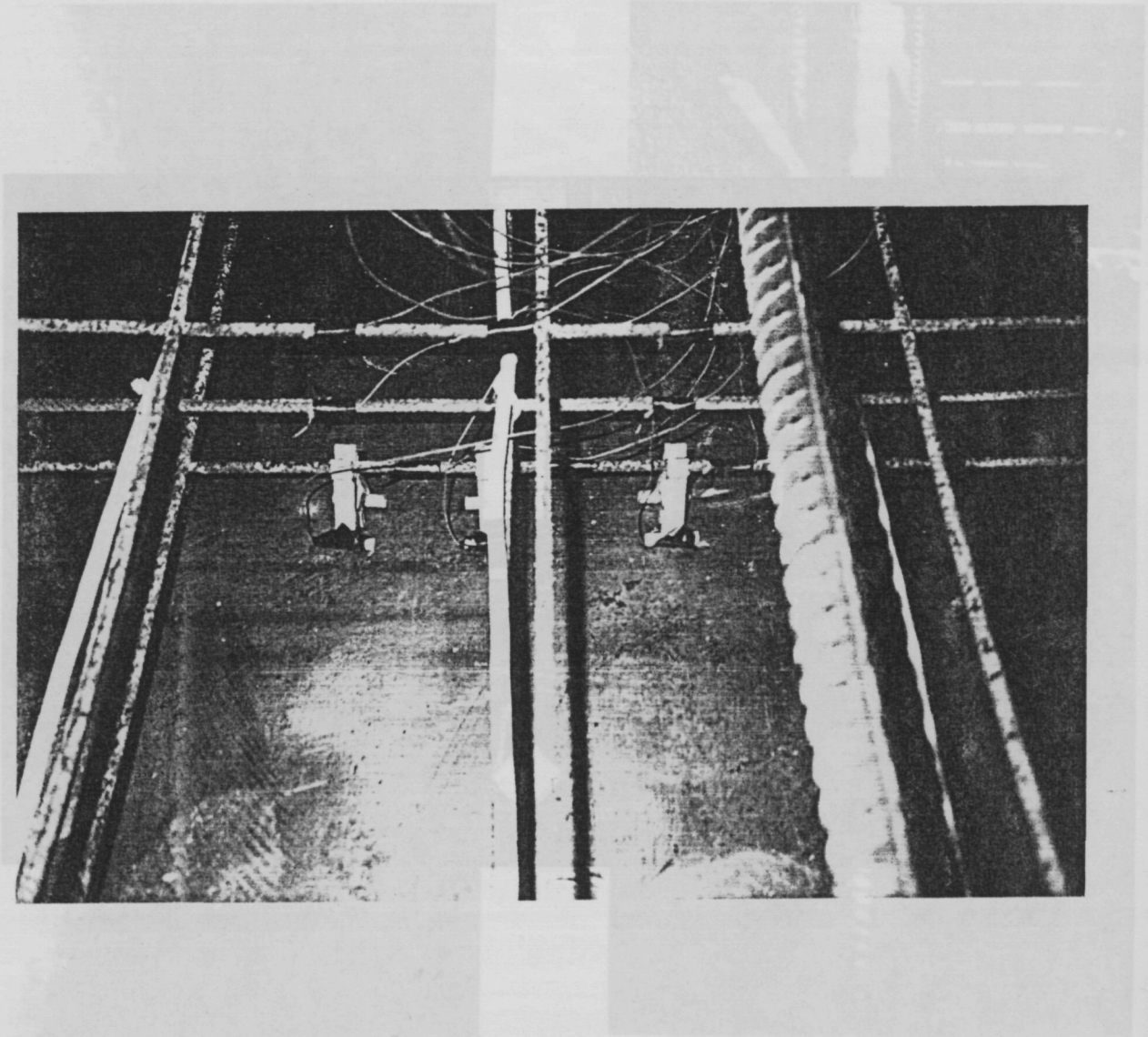


fig 8.15

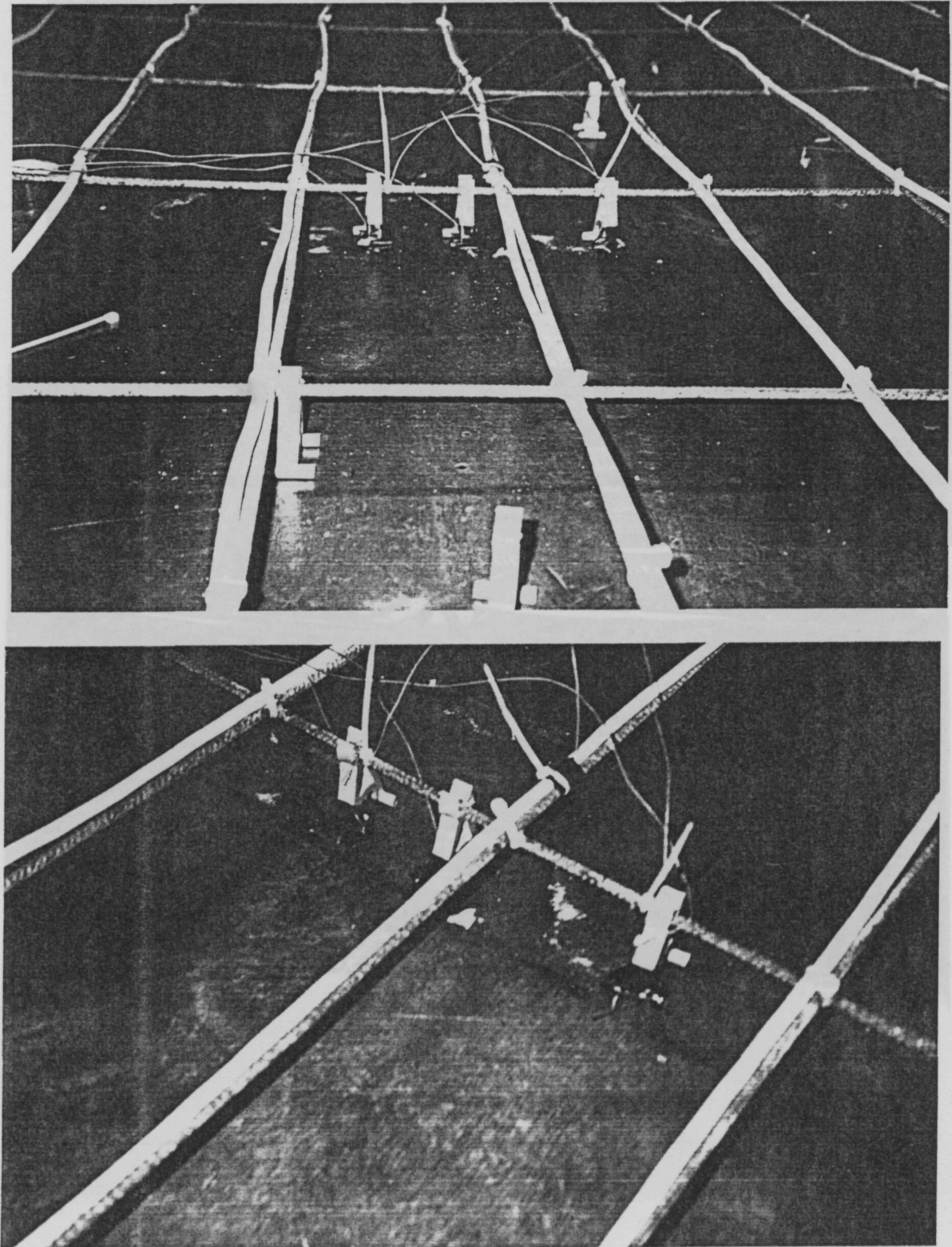


fig 8.16

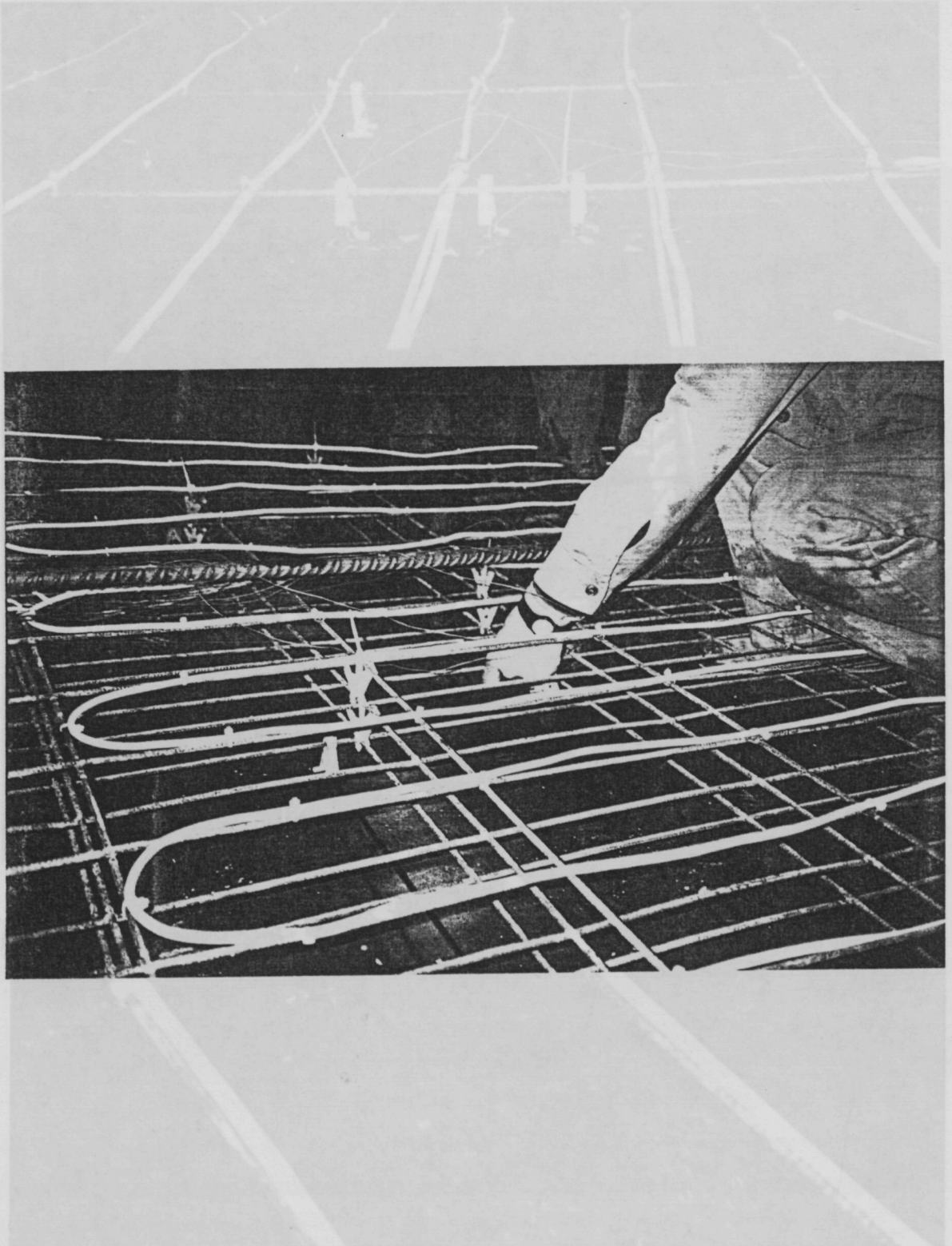


fig 8.16

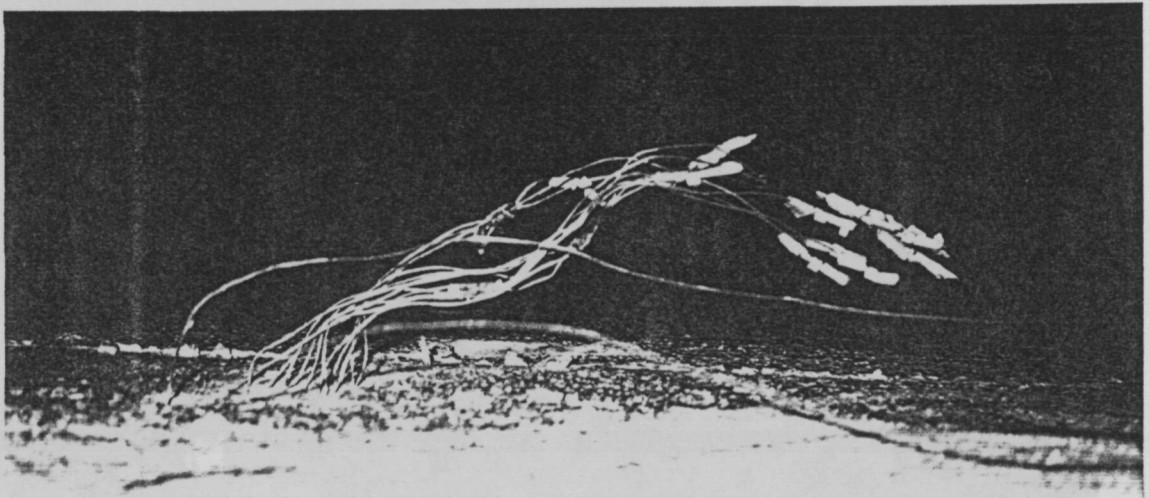
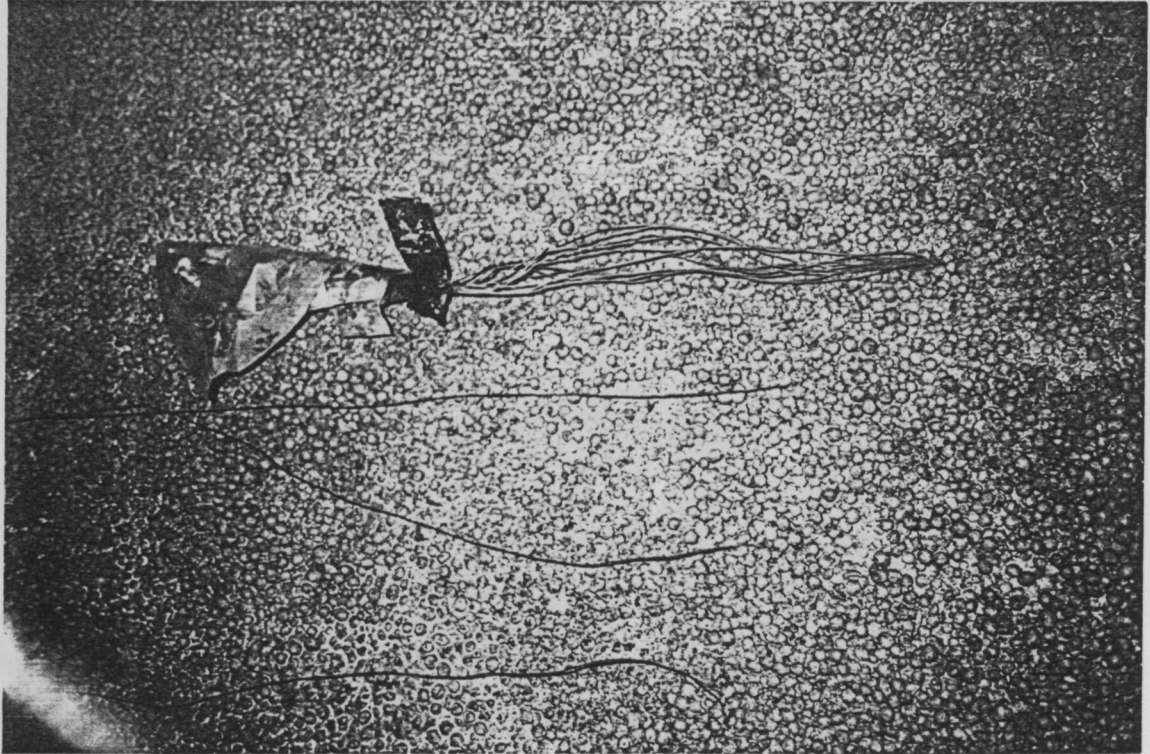


fig 8.17

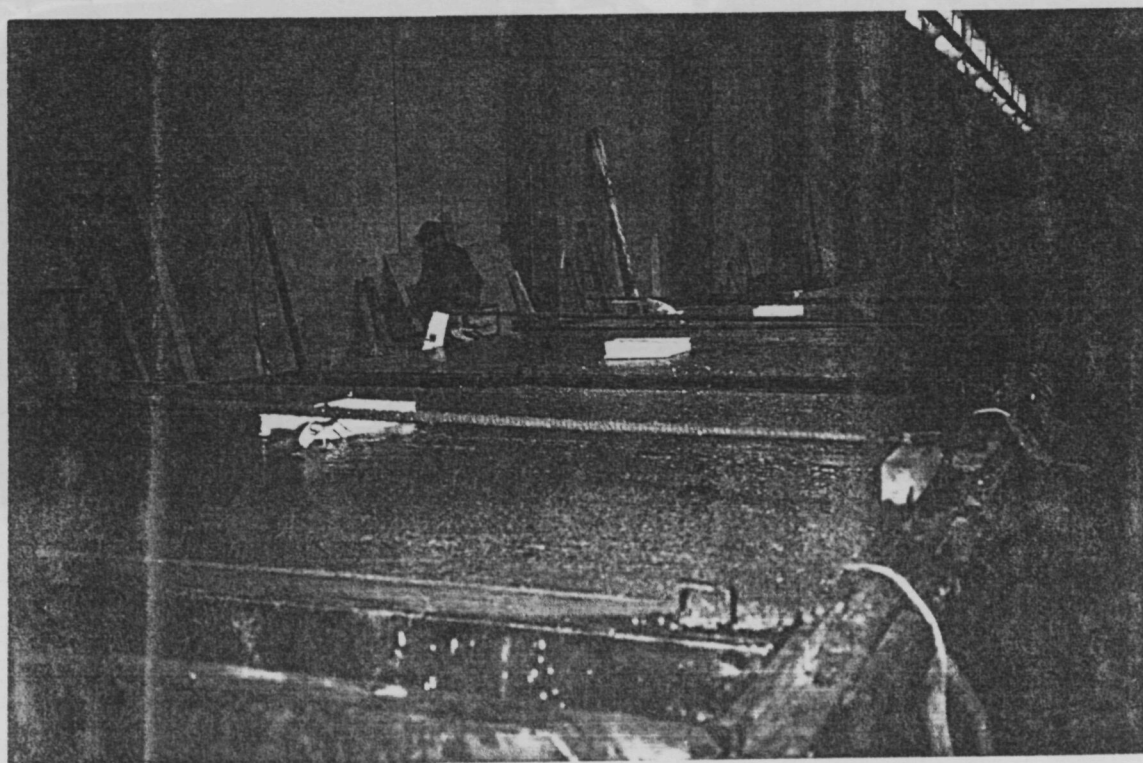
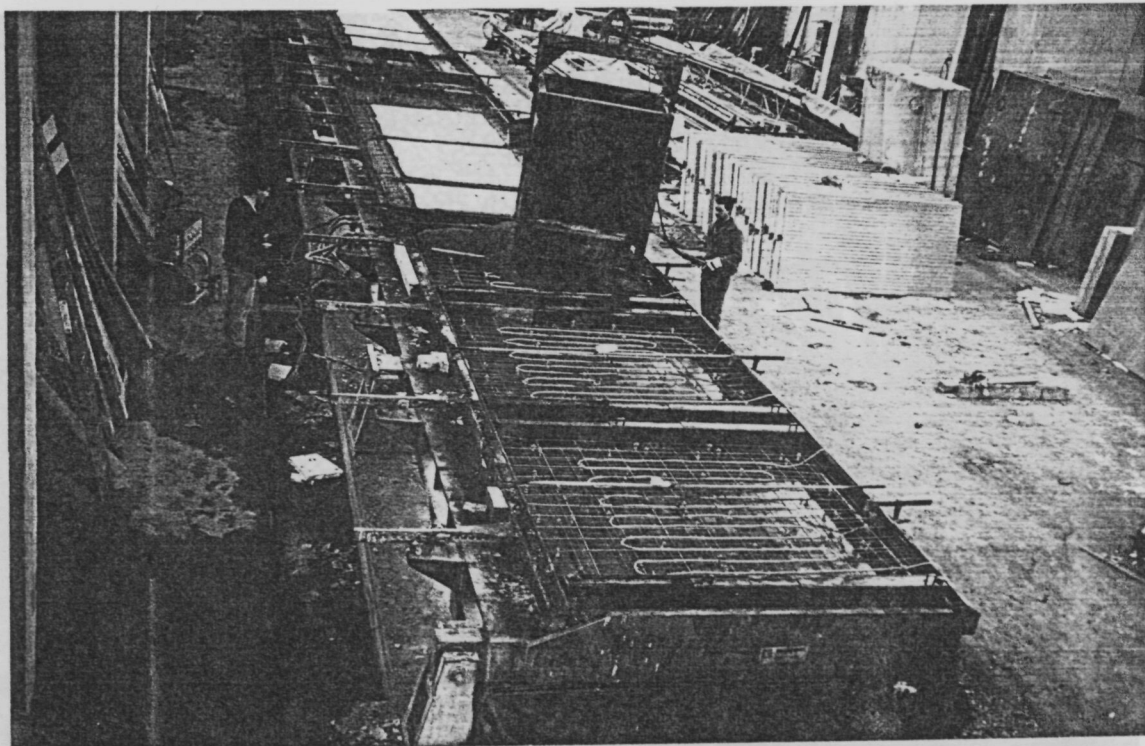


fig 8.18

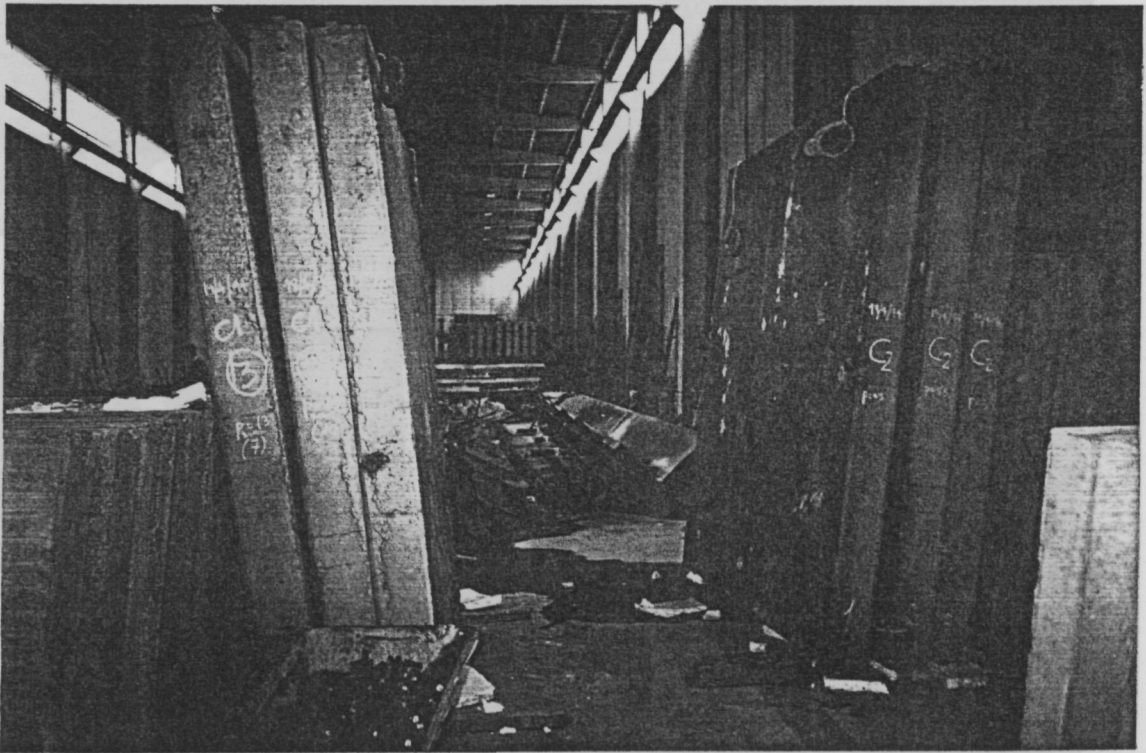


fig 8.18