

ANNEXE II: TABLE AND FIGURE INDEXES

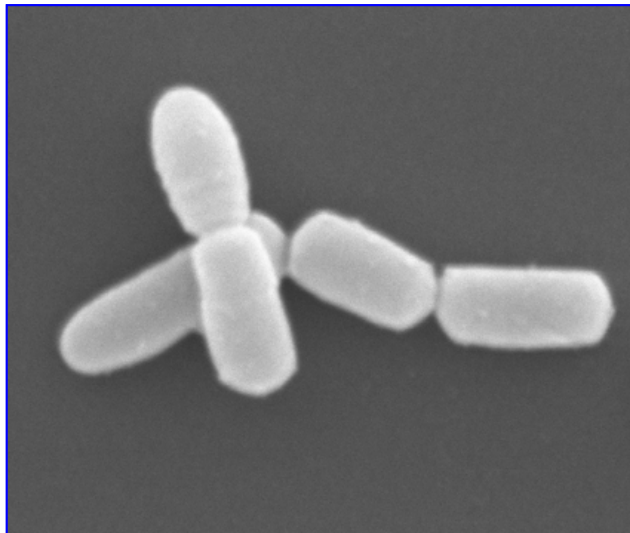


Figure A.5 *Rhodococcus* sp. CR-53.

TABLE INDEX

RESUMEN (SUMMARY)

Table R.1 Efecto de las sustancias naturales sobre CRL, evaluado mediante HPLC.	66
---	----

GENERAL INTRODUCTION

Table I.1 Lipids directly derived from fatty acids.	84
Table I.2 Classification and biological functions of terpenes.	91
Table I.3 Differences between lipases and esterases.	99
Table I.4 Reactions catalyzed by lipases.	102
Table I.5 Families of lipolytic enzymes (Arpigny & Jaeger, 1999; Jaeger & Eggert, 2002).	128–129
Table I.6 Main lipolytic microorganisms involved in pathogenesis.	139–140

GENERAL MATERIALS AND METHODS

Table M.1 Microorganisms and growth conditions used in this study.	178–180
Table M.2 Culture media and saline solutions.	181–182
Table M.3 Plasmids used in the present work.	186
Table M.4 Solutions used for the minipreparations of plasmid DNA.	188
Table M.5 Solutions used for the isolation of genomic DNA.	189
Table M.6 Solutions used for DNA gel electrophoresis.	190
Table M.7 Primers used for amplification/sequencing reactions.	195–197
Table M.8 DNA amplification conditions.	198
Table M.9 DNA sequencing conditions.	199
Table M.10 Solutions used for Dot blot and Southern blot assays.	205
Table M.11 Solutions for protein purification by the His-tag system.	210

Table M.12 Gel composition and solutions used for SDS-PAGE gels. _____	214
Table M.13 Composition of solution B. _____	219
Table M.14 Compounds which effect was assayed on lipolytic activity. _____	226

CHAPTER 1

Table C1.1 Lipolytic activity determination of the selected strains. _____	229
Table C1.2 Amino acid composition of BMLipA and BP6LipA. _____	251
Table C1.3 Substrate profile of BMLipA and BP6LipA. _____	255
Table C1.4 Kinetic parameters of BMLipA and BP6LipA. _____	261
Table C1.5 Effect of several agents on BMLipA and BP6LipA activity. _____	266

CHAPTER 2

Table C2.1 Number of CFU g ⁻¹ and isolates from each soil sample. _____	289
Table C2.2 Screening of the hydrolytic activities of the soil isolates. _____	291
Table C2.3 Hydrolytic activities of the most active soil isolates. _____	292–294
Table C2.4 Isolates selected by fluorimetric paper assay. _____	296
Table C2.5 Spectrofluorimetric determination of the lipolytic activity of the most active isolates on lipid substrates. _____	297–298
Table C2.6. Carbohydrate degradation of strain CR-179 and other <i>Bacillus</i> -related species showing a similar profile. _____	303
Table C2.7. Characteristics that distinguish strain CR-53 from close <i>Rhodococcus</i> type strain species. _____	311

CHAPTER 3

Table C3.1 CRL activity evaluated by colorimetric microassay and by HPLC. ____	339
Table C3.2 CRL inhibition by SFAs evaluated by several methods. _____	340
Table C3.3 Inhibition of <i>Bacillus</i> -related lipases by SFAs. _____	341

CHAPTER 4

Table C4.1 Effect of natural substances on CRL evaluated by HPLC. _____	359
---	-----

CHAPTER 5

Table C5.1 Amino acid composition of GehA. _____	386
Table C5.2 Substrate profile of GehA. _____	389
Table C5.3 Effect of several agents on GehA. _____	394
Table C5.4 Amino acid composition of EstV. _____	396
Table C5.5 Purification of EstV. _____	400
Table C5.6 Substrate profile of EstV. _____	401
Table C5.7 Effect of several agents on EstV. _____	406
Table C5.8 Effect of natural substances on GehA and EstV. _____	409

FIGURE INDEX

CONTENTS

Figure A.1 <i>Bacillus</i> sp. CR-179. _____	11
--	----

ABBREVIATIONS

Figure A.2 Isolated CR-273. _____	25
-----------------------------------	----

RESUMEN (SUMMARY)

Figure R.1 Halo de degradación producido por un microorganismo lipolítico en una placa suplementada con tributirina y rodamina B. _____	31
Figure R.2. Hidrólisis y síntesis de acilglicéridos mediante lipasas. _____	35
Figure R.3 Modelo de la estructura tridimensional de BMLipA y BP6LipA. _____	49
Figure R.4 Morfología celular de las cepas CR-179 y CR-53. _____	56
Figure R.5 Esquema del nuevo microensayo colorimétrico desarrollado en este capítulo. _____	60
Figure R.6 Comparación de la inhibición causada por sustancias naturales sobre CRL, GehA y EstV. _____	63

GENERAL INTRODUCTION

Figure I.1 Three-dimensional structure of <i>B. subtilis</i> LipA (van Pouderoyen <i>et al.</i> , 2001). _____	77
Figure I.2 Micelles and bilayers formed by amphipathic lipids. _____	80
Figure I.3 General classification of lipids. _____	81

Figure I.4 Structure of a saturated (A) and an unsaturated (B) fatty acid. _____	83
Figure I.5 Structure of glycerol and acylglycerols (AGs). _____	86
Figure I.6 Honeybee wax. _____	87
Figure I.7 Structure of a sphingoceramide. _____	89
Figure I.8 Terpenes and related compounds. _____	90
Figure I.9 Structure of sterane (A) and cholesterol (B). _____	92
Figure I.10 Ginkgolic acid, a catechol-derived lipid. _____	93
Figure I.11 Structure and degradation of glycerophospholipids. _____	94
Figure I.12 Hydrolysis or synthesis of acylglycerols by lipases. _____	98
Figure I.13 Schematic representation of the canonical α/β hydrolase fold. _____	104
Figure I.14 Mechanism of hydrolysis. _____	108
Figure I.15 Comparison of the enzymatic activity of carboxylesterases and “true” lipases. _____	109
Figure I.16 Closed (A) and open (B) state of <i>Candida rugosa</i> lipase. _____	111
Figure I.17 Active site of <i>Burkholderia cepacia</i> lipase. _____	112
Figure I.18 Shape of the scissile fatty acid binding site of esterases and “true” lipases. _____	114
Figure I.19 Ribbon diagram of the three-dimensional structure of <i>Candida rugosa</i> lipase. _____	119
Figure I.20 Model for the regulatory network controlling expression of the lipase operon lipA/H in <i>Ps. aeruginosa</i> . _____	122
Figure I.21 Major pathways used by bacteria to secrete lipases (Eggert & Jaeger, 2002). _____	125
Figure I.22 <i>P. acnes</i> and acne. _____	141
Figure I.23 Synopsis of main factors involved in the pathogenesis of acne. _____	144
Figure I.24 Interaction between <i>P. acnes</i> and immune cells. _____	146
Figure I.25 <i>Helicobacter pylori</i> and peptic ulcer. _____	148
Figure I.26 Main factors involved in <i>Helicobacter pylori</i> -induced pathogenesis. _____	152–153
Figure I.27 Structure of lipstatin. _____	154
Figure I.28 Structures of digitonin (A) and glycyrrhizic acid (B). _____	158
Figure I.29 General structure of a flavonoid. _____	160

Figure I.30 Skeletal structures of alkaloids found in medicinal plants. _____ 163

GENERAL MATERIALS AND METHODS

Figure M.1 AKTA FPLC (Fast Protein Liquid Chromatograph). _____ 169
Figure M.2 Direct PCR amplification. _____ 193
Figure M.3 General process of inverse PCR. _____ 194
Figure M.4 Control elements of the pET-28a-*E. coli* BL21 (DE3). _____ 209

CHAPTER 1

Figure C1.1 Model of the three-dimensional structure of *Bacillus megaterium* LipA
_____ 229
Figure C1.2 General process of isolation and cloning of *Bacillus* lipase-coding genes.
_____ 238
Figure C1.3 Zymogram analysis of *B. megaterium* CECT 370 lipolytic system. __ 240
Figure C1.4 Zymogram analysis of *Bacillus* sp. BP-6 lipolytic system. _____ 241
Figure C1.5 Consensus primers for the central region of (*Geo*)*Bacillus* lipases. __ 243
Figure C1.6 Amplification of *Bacillus* lipase-coding genes. _____ 245
Figure C1.7 Primers designed from the 5' and 3' ends of the *yfiP* gene sequence. _ 246
Figure C1.8 Activity on MUF-derivatives of the recombinant clones obtained. __ 247
Figure C1.9 Confirmation by Dot blot of the presence of the cloned genes in the
parental strains. _____ 247
Figure C1.10 Nucleotide and amino acid sequence of *B. megaterium* CECT 370 *lipA*
ORF. _____ 250
Figure C1.11 Automated comparative protein model of BMLipA and BP6LipA. _ 252
Figure C1.12 Three-dimensional structure of several *Bacillus* lipases. _____ 253
Figure C1.13 Substrate range of BMLipA and BP6LipA. _____ 256
Figure C1.14 Optimum temperature and pH of BMLipA (blue) and BP6LipA (red).
_____ 257
Figure C1.15 Temperature and pH stability of BMLipA (blue) and BP6LipA (red)
after 1 h-incubation. _____ 259

Figure C1.16 Long-term temperature stability of the cloned lipases. _____	260
Figure C1.17 Kinetic behaviour of BMLipA (blue) and BP6LipA (red). _____	262
Figure C1.18 Effect of cations and amino acid modifiers on BMLipA (blue) and BP6LipA (red). _____	264
Figure C1.19 Effect of PMSF and other agents on BMLipA (blue) and BP6LipA (red). _____	265
Figure C1.20 Zymogram analysis on MUF-butyrate of BMLipA and BP6LipA. _	267

CHAPTER 2

Figure C2.1 Iguazú rainfalls. _____	281
Figure C2.2 Isolation of microorganisms from a subtropical forest soil. _____	286
Figure C2.3 Examples of the morphological diversity found among the isolated strains. _____	290
Figure C2.4 Hydrolytic activity of the most active isolates on the substrates evaluated. _____	295
Figure C2.5 Fluorimetric paper assay of several selected lipolytic isolates. _____	296
Figure C2.6 Hydrolytic activity of strain CR-179. _____	300
Figure C2.7 Microscopic analysis of strain CR-179 morphological properties. ____	301
Figure C2.8 Phylogenetic trees based on the 16S rDNA sequence of strain CR-179. _____	304
Figure C2.9 Zymogram analysis of <i>Bacillus</i> sp. CR-179 crude cell extracts. ____	306
Figure C2.10 Nucleotide and amino acid sequence of the lipase-coding gene fragment from <i>Bacillus</i> sp. CR-179 obtained by using the primers FWSUB/BWSUB. _____	307
Figure C2.11 Activity of strain CR-53 lipid substrates. _____	308
Figure C2.12 Cellular morphology of strain CR-53. _____	309
Figure C2.13 Phylogenetic tree based on the 16S rDNA sequence of strain CR-53. _____	312
Figure C2.14 Zymographic analysis of crude cell extracts from <i>Rhodococcus</i> sp. CR- 53. _____	313

CHAPTER 3

Figure C3.1 Colorimetric microassay. _____	329
Figure C3.2 Scheme of the new colorimetric microassay developed in this chapter. _____	334
Figure C3.3 CRL activity evaluated by the colorimetric microassay and by HPLC. _____	338
Figure C3.4 Effect of saturated fatty acids on CRL and <i>Bacillus</i> -related lipases. _	342

CHAPTER 4

Figure C4.1 Three-dimensional structure of digitonin. _____	351
Figure C4.2 Structure of the saponins, flavonoids and alkaloids analyzed. __	357–358
Figure C4.3 Comparison of the IC ₁₆ of natural substances evaluated on CRL by HPLC. _____	360
Figure C4.4 Comparison of the inhibition produced by saponins on CRL evaluated by HPLC (blue) and colorimetric microassay (red). _____	361

CHAPTER 5

Figure C5.1 <i>H. pylori</i> cells (http://www.helico.com). _____	373
Figure C5.2 Isolation, cloning and purification of <i>H. pylori</i> 26695 EstV. _____	382
Figure C5.3 Amino acid sequence and secondary structure prediction of GehA. __	387
Figure C5.4 Activity of <i>E. coli</i> XL1-Blue-pUC-GehA on lipid substrates. _____	388
Figure C5.5 Substrate range of GehA. _____	390
Figure C5.6 Optimum temperature and pH of GehA. _____	391
Figure C5.7 Kinetic behaviour of GehA on <i>p</i> -NP butyrate and <i>p</i> -NP caprate. ____	392
Figure C5.8 Effect on GehA of several agents at a concentration of 1 mM (blue) and 10 mM (red). _____	393
Figure C5.9 Amino acid sequence and secondary structure prediction of EstV. __	398
Figure C5.10 Cloning and purification of EstV. _____	400
Figure C5.11 Substrate range of EstV. _____	402
Figure C5.12 Optimum temperature and pH of EstV. _____	403

Figure C5.13 Kinetic behaviour of EstV on MUF-butyrate. _____	404
Figure C5.14 Effect on EstV of several agents at a concentration of 1 mM (blue) and 10 mM (red). _____	405
Figure C5.15 Inhibition (and activation) of GehA and EstV by natural substances. _____	408
Figure C5.16 Comparison of inhibition by natural substances on CRL, GehA and EstV. _____	410

GENERAL DISCUSSION

Figure D.1 Three-dimensional structure of (±)-catechin (left) and kaempferol (right). _____	425
Figure D.2 Hypothetical interaction between (±)-catechin and CRL. _____	434

REFERENCES AND WEB RESOURCES

Figure A.3 Natural environments are a source of novel microbial strains and also a source of substances of pharmacological interest. _____	437
--	-----

ANNEXE I: PUBLICATIONS

Figure A.4 Amplification of <i>B. subtilis lipB</i> -related genes. _____	477
---	-----

ANNEXE II: TABLE AND FIGURE INDEX

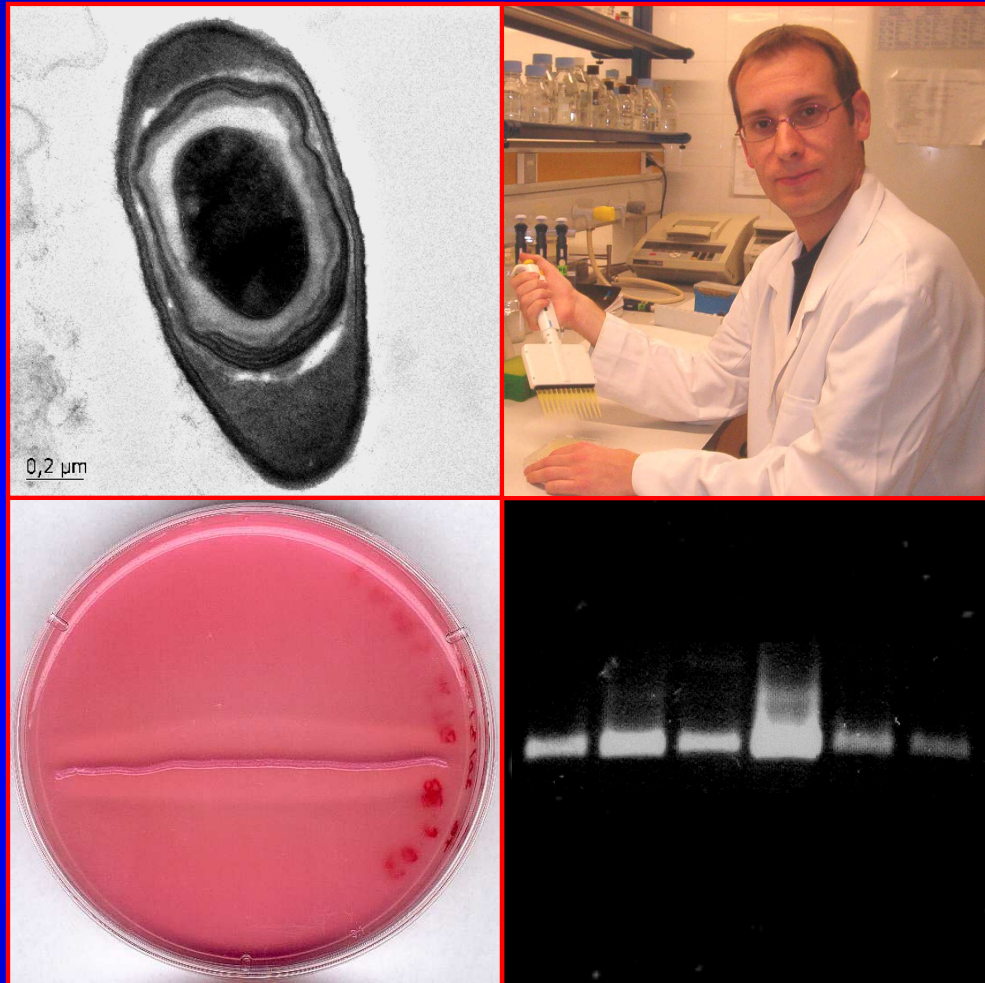
Figure A.5 <i>Rhodococcus</i> sp. CR-53. _____	595
--	-----

“Even the difficulties and the deceptions should be considered as positive means to evolve or to start again, since lamentations do not contribute to solve the negative events of life”

Michel Leroy

“Incluso los obstáculos y las decepciones deben ser considerados como medios positivos para evolucionar o comenzar de nuevo, ya que las lamentaciones no aportan ninguna solución a los aspectos negativos de la vida”

Michel Leroy



Cristian Ruiz Rueda

PhD Thesis

2005