

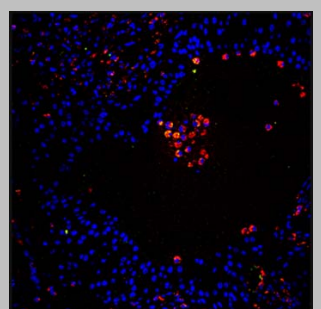
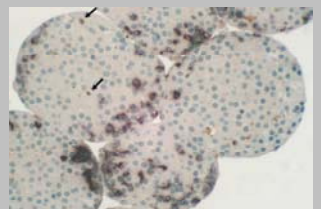
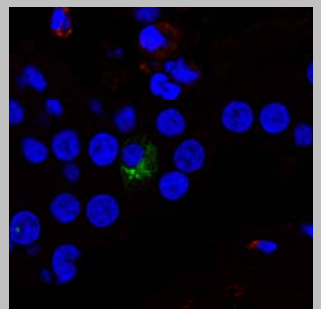
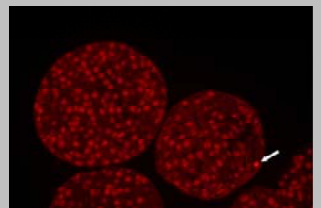
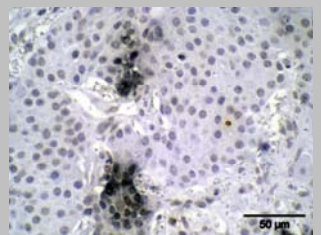
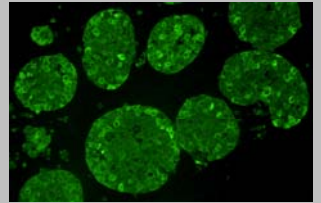
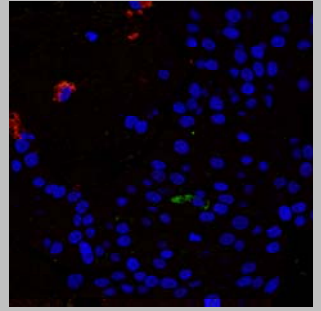
UNIVERSITAT DE BARCELONA

DEPARTAMENT DE CIÈNCIES CLÍNiques

LESIÓ I PROTECCIÓ DE LES CÈL·LULES BETA EN EL
TRASPLANTAMENT D'ILLOTS PANCREÀTICS

Marta Montolio Rusiñol

2006



BIBLIOGRAFIA

A

- Adams JM, Cory S. The Bcl-2 protein family: arbiters of cell survival. *Science* 281:1322–1326, 1998.
- Antonsson B, Martinou JC. The Bcl-2 protein family. *Experimental Cell Research* 256:50–57, 2000.
- Arnush M, Heitmeier MR, Scarim AL, Marino MH, Manning PT, Corbett JA. IL-1 produced and released endogenously within human islets inhibits beta cell function. *The Journal of Clinical Investigation* 102:516–526, 1998.

B

- Baan CC, Weimar W. Intragraft cytokine gene expression: implications for clinical transplantation. *Transplant International* 11:169–180, 1998.
- Bach JF, Mathis D. 70th forum immunology: the NOD mouse. *Research in Immunology* 148:281–370, 1997.
- Ballinger WF, Lacy PE. Transplantation of intact pancreatic islets in rats. *Surgery* 72:175–186, 1972.
- Beattie GM, Leibovitz G, Lopez AD, Levine F, Hayek A. Protection from cell death in cultured human fetal pancreatic cells. *Cell Transplantation* 9:431–438, 2000.
- Bell RC, Khurana M, Ryan EA, Finegood DT. Gender differences in the metabolic response to graded numbers of trasplanted islets of Langerhans. *Endocrinology* 135:2681–2687, 1994.
- Berney T, Bühler LH, Morel P. Pancreas allocation in the era of islet transplantation. *Transplant International* 18:763–769, 2005.
- Berney T, Damaris Molano R, Cattan P, Pileggi A, Vizzardelli C, Oliver R, Ricordi C, Inverardi L. Endotoxin-mediated delayed islet graft function is associated with increased intra-islet cytokine production and islet cell apoptosis. *Transplantation* 71:125–132, 2001.
- Biarnés M. Mecanismes de lesió de la cèl·lula beta en el trasplantament singènic d'illots de Langerhans. Tesi Doctoral. Universitat de Barcelona. 2003.
- Biarnés M, Montolio M, Nacher V, Raurell M, Soler J, Montanya E. β -cell death and mass in syngeneically transplanted islets exposed to short- and long-term hyperglycemia. *Diabetes* 51:66–72, 2002.

Bibliografia

- Blume N, Skouv J, Larsson LI, Holst JJ, Madsen OD. Potent inhibitory effects of transplantable rat glucagonomas and insulinomas on the respective endogenous islet cells are associated with pancreatic apoptosis. *The Journal of Clinical Investigation* 96:2227–2235, 1995.
- Bonner-Weir S, Deery D, Leahy JL, Weir GC. Compensatory growth of pancreatic beta-cells in adult rats after short-term glucose infusion. *Diabetes* 38:49–53, 1989.
- Bonner-Weir S, Taneja M, Weir GC, Tatarkiewicz K, Song KH, Sharma A, O'Neil JJ. In vitro cultivation of human islets from expanded ductal tissue. *Proceedings of the National Academy of Science of USA* 97:7999–8004, 2000.
- Bonner-Weir S. Beta-cell turnover. Its assessment and implications. *Diabetes* 50:S20–S24, 2001.
- Bonner-Weir S. Islet growth and development in the adult. *The Journal of Molecular Endocrinology* 24:297–302, 2000.
- Bonny C, Oberson A, Negri S, Sauser C, Schorderet DF. Cell-permeable peptide inhibitors of JNK: novel blockers of beta-cell death. *Diabetes* 50:77–82, 2001.
- Bosi E, Braghi S, Maffi P, Scirpoli M, Bertuzzi F, Pozza G, Secchi A, Bonifacio E. Autoantibody response to islet transplantation in type 1 diabetes. *Diabetes* 50:2464–2471, 2001.
- Bottino R, Fernandez LA, Ricordi C, Lehmann R, Tsan MF, Oliver R, Inverardi L. Transplantation of allogeneic islets of Langerhans in the rat liver: effects of macrophage depletion on graft survival and microenvironment activation. *Diabetes* 47:316–323, 1998.
- Braun JS, Novak R, Herzog KH, Bodner SM, Cleveland JL, Tuomanen EI. Neuroprotection by a caspase inhibitor in acute bacterial meningitis. *Nature Medicine* 5:298–302, 1999.
- Brendel M, Hering B, Schulz A, Bretzel R. International Islet Transplant Registry Report. Giessen: University of Giessen. pp. 1–20, 1999.
- Briaud I, Rouault C, Reach G, Pitout V. Long-term exposure of isolated rat islets of Langerhans to supraphysiologic glucose concentrations decreases insulin mRNA levels. *Metabolism*, 48:319–323, 1999.
- Bruns CJ, Shinohara H, Harbidon MT, Davis DW, Nelkin G, Killion JJ, McConkey DJ, Dong Z, Fidler IJ. Therapy of human pancreatic carcinoma implants by irinotecan and the oral immunomodulator JBT 3002 is associated with enhanced expression of inducible nitric oxide synthase in tumor-infiltrating macrophages. *Cancer Research* 60:2–7, 2000.
- Butler AE, Janson J, Bonner-Weir S, Ritzel R, Rizza RA, Butler PC. Beta cell deficit and increased beta cell apoptosis in humans with type 2 diabetes mellitus. *Diabetes* 52:102–110, 2003.

C

- Cameron R, Feuer G. Apoptosis and its modulation by drugs. Ed. Springer-Verlag, Heidelberg, 2000.
- Campbell IL, Cutri A, Wilson A, Harrison LC. Evidence for IL-6 production by and effects on the pancreatic β -cell. *Journal of Immunology* 143:1188–1191, 1989.
- Campbell IL, Iscaro A, Harrison LC. IFN- γ and Tumor Necrosis Factor- α . Cytotoxicity to murine islets of Langerhans. *Journal of Immunology*; 141:2325–2329, 1988.
- Cardozo AK, Proost P, Gysemans C, Chen M-C, Mathieu C, Eizirik DL. IL-1 β and IFN- γ induce the expression of diverse chemokines and IL-15 in human and rat pancreatic islet cells, and in islets from pre-diabetic NOD mice. *Diabetologia* 46:255–266, 2003.
- Carter JD, Ellett JD, Chen M, Smith KM, Fialkow LB, McDuffie MJ, Tung KS, Nadler JL, Yang Z. Viral IL-10-mediated immune regulation in pancreatic islet transplantation. *Molecular Therapy* 12:360–368, 2005.
- Cetkovic-Cvrlje M, Eizirik DL. TNF- α and IFN- γ potentiate the deleterious effects of IL-1 β on mouse pancreatic islets mainly via generation of nitric oxide. *Cytokine* 6:399–406, 1994.
- Chahine AA, Stoeckert C, Lau HT. Local immunomodulation to promote co-stimulatory blockade. *Clinical Transplantation* 9:215–218, 1995.
- Charron MJ, Bonner-Weir S. Implicating PARP and NAD⁺ depletion in type I diabetes. *Nature Medicine* 5:269–270, 1999.
- Cheng Y, Deshmukh M, D'Costa A, Demaro JA, Gidday JM, Shah A, Sun Y, Jacquin MF, Johnson EM, Holtzman DM. Caspase inhibitor affords neuroprotection with delayed administration in a rat model of neonatal hypoxic-ischemic brain injury. *The Journal of Clinical Investigation* 101:1992–1999, 1998.
- Chervonsky AV, Wang Y, Wong FS, Visintin I, Flavell RA, Janeway CA Jr, Matis LA. The role of Fas in autoimmune diabetes. *Cell* 89:17–24, 1997.
- Choi S-E, Choi K-M, Yoon I-H, Shin JY, Kim JS, Park WY, Han DJ, Kim SC, Ahn C, Kim JY, Hwang ES, Cha CY, Szot GL, Yoon KH, Park CG. IL-6 protects pancreatic islet beta cells from pro-inflammatory cytokines-induced cell death and functional impairment in vitro and in vivo. *Transplant Immunology* 13:43–53, 2004.
- Cnop M, Welsh N, Jonas J-C, Jörns A, Lenzen S, Eizirik DL. Mechanisms of pancreatic β -cell death in type 1 and type 2 diabetes. Many differences, few similarities. *Diabetes* 54:S97–S107, 2005.

Bibliografia

Cohen GM. Caspases: the executioners of apoptosis. *Biochemical Journal* 326:1–16, 1997.

Corbett JA, McDaniel ML. Intraislet release of interleukin 1 inhibits beta cell function by inducing beta cell expression of inducible nitric oxide synthase. *The Journal of Experimental Medicine* 181:559–568, 1995.

Cursio R, Gugenheim J, Ricci JE, Crenesse D, Rostagno P, Maulon L, Saint-Paul MC, Ferrua B, Mouiel J, Auberger P. Caspase inhibition protects from liver injury following ischemia and reperfusion in rats. *Transplant International* 13:S568–S572, 2000.

Cutillas B, Espejo M, Gil J, Ferrer I, Ambrosio S. Caspase inhibition protects nigral neurons against 6-OHDA-induced retrograde degeneration. *Neuroreport* 10:2605–2608, 1999.

D

Daemen MA, van't Veer C, Denecker G, Heemskerk VH, Wolfs TG, Clauss M, Vandenaabeele P, Buurman WA. Inhibition of apoptosis induced by ischemia-reperfusion prevents inflammation. *The Journal of Clinical Investigation* 104:541–549, 1999.

Dallman MJ, Larsen CP, Morris PJ. Cytokine gene transcription in vascularised organ grafts: analysis using semiquantitative polymerase chain reaction. *Journal of Experimental Medicine* 174:493–496, 1991.

Dandona P, Aljada A. A rational approach to pathogenesis and treatment of type 2 diabetes mellitus, insulin resistance, inflammation, and atherosclerosis. *American Journal of Cardiology* 90:27G–33G, 2002.

Davalli AM, Ogawa Y, Scaglia L, Wu YJ, Hollister J, Bonner-Weir S, Weir GC. Function, mass, and replication of porcine and rat islets transplanted into diabetic nude mice. *Diabetes* 44:104–111, 1995.

Davalli AM, Scaglia L, Zangen DH, Hollister J, Bonner-Weir S, Weir GC. Vulnerability of islets in the immediate posttransplantation period. Dynamic changes in structure and function. *Diabetes* 45:1161–1167, 1996.

DeFronzo RA, Bonadonna RC, Ferrannini E. Pathogenesis of NIDDM. A balanced overview. *Diabetes Care* 15:318–368, 1992.

Delaney CA, Pavlovic D, Hoorens A, Pipeleers DG, Eizirik DL. Cytokines induce deoxyribonucleic acid strand breaks and apoptosis in human pancreatic islet cells. *Endocrinology* 138:2610–2614, 1997.

- Delaney CA, Tyberg B, Bouerns L, Vaghef H, Hellman B, Eizirik DL. Sensitivity of human pancreatic islets to peroxynitrite-induced cell dysfunction and death. *FEBS Letters* 394:300–306, 1996.
- Donath MY, Gross DJ, Cerasi E, Kaiser N. Hyperglycemia-induced β -cell apoptosis in pancreatic islets of *Psammomys obesus* during development of diabetes. *Diabetes* 48:738–744, 1999.
- Donath MY, Størling J, Maedler K, Mandrup-Poulsen T. Inflammatory mediators and islet β -cell failure: a link between type 1 and type 2 diabetes. *Journal of Molecular Medicine* 81:455–470, 2003.
- Dor Y, Brown J, Martinez OI, Melton DA. Adult pancreatic β -cells are formed by self-duplication rather than β -cell differentiation. *Nature* 429:41–46, 2004.

E

- Efendic S, Kindmark H, Berggren PO. Mechanisms involved in the regulation of the insulin secretory process. *The Journal of Internal Medicine* 735:9–22, 1991.
- Efrat S. Cell replacement therapy for type 1 diabetes. *Trends in Molecular Medicine* 8:334–339, 2002.
- Eizirik DL, Cagliero E, Björklund A, Welsh N. Interleukin-1 β induces the expression of an isoform of nitric oxide synthase in insulin-producing cells, which is similar to that observed in activated macrophages. *FEBS Letters* 308: 249–252, 1992.
- Eizirik DL, Darville MI. β -cell apoptosis and defense mechanisms. Lessons from type 1 diabetes. *Diabetes* 50:S64–S69, 2001.
- Eizirik DL, Jansson L, Flodstrom M, Hellerstrom C, Andersson A. Mechanisms of defective glucose-induced insulin release in human pancreatic islets transplanted to diabetic nude mice. *The Journal of Clinical Endocrinology and Metabolism* 82:2660–2663, 1997.
- Eizirik DL, Mandrup-Poulsen T. A choice of death – the signal-transduction of immune-mediated beta-cell apoptosis. *Diabetologia* 44:2115–2133, 2001.
- Eizirik DL, Pavlovic D. Is there a role for nitric oxide in β -cell dysfunction and damage in IDDM? *Diabetes/Metabolism Reviews* 14:129–151, 1997.
- Eizirik DL, Sandler S, Welsh N, Cetkovic-Cvrlje M, Nieman A, Geller DA, Pipeleers DG, Bendtzen K, Hellerstrom C. Cytokines suppress human islet function irrespective of their effects on nitric oxide generation. *The Journal of Clinical Investigation* 93:1968–1974, 1994.

Bibliografia

Eizirik DL, Welsh M, Strandell E, Welsh N, Sandler S. Interleukin-1 β depletes insulin messenger ribonucleic acid and increases the heat shock protein hsp70 in mouse pancreatic islets without impairing the glucose metabolism. *Endocrinology* 127:2290–2297, 1990.

Elouil H, Cardozo AK, Eizirik DL, Henquin JC, Jonas JC. High glucose and hydrogen peroxide increase c-Myc and haeme-oxygenase 1 mRNA levels in rat pancreatic islets without activating NF κ B. *Diabetologia* 48:496–505, 2005.

F

Farber A, Connors JP, Friedlander RM, Wagner RJ, Powell RJ, Cronenwett JL. A specific inhibitor of apoptosis decreases tissue injury after intestinal ischemia-reperfusion in mice. *Journal of Vascular Surgery* 30:752–760, 1999.

Federici M, Hribal M, Perego L, Ranalli M, Caradonna Z, Perego C, Usellini L, Nano R, Bonini P, Bertuzzi F, Marlier LN, Davalli AM, Carandente O, Pontiroli AE, Melino G, Marchetti P, Lauro R, Sesti G, Folli F. High glucose causes apoptosis in cultured human pancreatic islets of Langerhans. A potential role for regulation of specific Bcl family genes toward and apoptotic cell death program. *Diabetes* 50:1290–1301, 2001.

Ferrer-Garcia JC, Merino-Torres JF, Perez Bermejo G, Herrera-Vela C, Ponce-Marco JL, Pinon-Selles F. Insulin-induced normoglycemia reduces islet number needed to achieve normoglycemia after allogeneic islet transplantation in diabetic mice. *Cell Transplantation* 12:849–857, 2003.

Finegood DT, Scaglia L, Bonner-Weir S. Dynamics of beta-cell mass in the growing rat pancreas: estimation with a simple mathematical model. *Diabetes* 44:249–256, 1995.

Fioretto P, Steffes MW, Sutherland DER, Goetz FC, Mauer M. Reversal of lesions of diabetic nephropathy after pancreas transplantation. *The New England Journal of Medicine* 339:69–75, 1998.

Fried SK, Bunkin DA, Greenberg AS. Omental and subcutaneous adipose tissues of obese subjects release interleukin-6: depot difference and regulation by glucocorticoid. *The Journal of Clinical Endocrinology and Metabolism* 83:847–850, 1998.

G

Gaglia JL, Shapiro AMJ, Weir GC. Islet transplantation: Progress and Challenge. *Archives of Medical Research* 36:273–280, 2005.

- Garcia-Calvo M, Peterson EP, Leiting B, Ruel R, Nicholson DW, Thornberry NA. Inhibition of human caspases by peptide-based and macromolecular inhibitors. *The Journal of Biological Chemistry* 273:32608–32613, 1998.
- Giuliani M, Moritz W, Bodmer E, Dindo D, Kugelmeier P, Lehmann R, Gassmann M, Groscurth P, Weber M. Central necrosis in isolated hypoxic human pancreatic islets: evidence for postisolation ischemia. *Cell Transplantation* 14:67–76, 2005.
- Green D, Kroemer G. The central executioners of apoptosis: caspases or mitochondria. *Trends in Cell Biology* 8:267–271, 1998.
- Grey ST, Arvelo MB, Hasenkamp W, Bach FH, Ferran C. A20 inhibits cytokine-induced apoptosis and nuclear factor κ B-dependent gene activation in islets. *The Journal of Experimental Medicine* 190:1135–1145, 1999.
- Gross A, Yin XM, Wang K, Wei MC, Jockel J, Milliman C, Erdjument-Bromage H, Tempst P, Korsmeyer SJ. Caspase cleaved BID targets mitochondria and is required for cytochrome c release, while BCL-XL prevents this release but not TNFR1/Fas death. *The Journal of Biological Chemistry* 274:1156–1163, 1999.
- Guessner AC, Sutherland DE. Pancreas transplants for United States (US) and non-US cases as reported to the International Pancreas Transplant Registry (IPTR) and to the United Network for Organ Sharing (UNOS). *Clinical Transplants* 45–59, 1997.

H

- Hanke J. Apoptosis and occurrence of Bcl-2, Bak, Bax, Fas and FasL in the developing and adult rat endocrine pancreas. *Anatomy and Embryology* 202:303–312, 2000.
- Hara H, Friedlander RM, Gagliardini V, Ayata C, Fink K, Huang Z, Shimizu-Sasamata M, Yuan J, Moskowitz MA. Inhibition of interleukin 1 β converting enzyme family proteases reduces ischemic and excitotoxic neuronal damage. *Proceedings of the National Academy of Sciences of USA* 94:2007–2012, 1997.
- Harding HP, Zeng H, Zhang Y, Jungries R, Chung P, Plesken H, Sabatini DD, Ron D. Diabetes mellitus and exocrine pancreatic dysfunction in pek $-/-$ mice reveals a role for translational control in secretory cell survival. *Molecular Cell* 7:1153–1163, 2001.
- Heitmeier MR, Arnush M, Scarim AL, Corbett JA. Pancreatic β -cell damage mediated by β -cell production of interleukin-1. A novel mechanism for virus-induced diabetes. *The Journal of Biological Chemistry* 276: 11151–11158, 2001.

Bibliografia

Heller B, Burkart V, Lampeter E, Kolb H. Antioxidant therapy for the prevention of type I diabetes. *Advances in Pharmacology* 38:629–638, 1997.

Heller B, Wang ZQ, Wagner EF, Radons J, Burkle A, Fehsel K, Burkart V, Kolb H. Inactivation of the poly(ADP-ribose) polymerase gene affects oxygen radical and nitric oxide toxicity in islet cells. *The Journal of Biological Chemistry* 270:11176–11180, 1995.

Hengartner MO. The biochemistry of apoptosis. *Nature* 406:770–776, 2000.

Hoorens A, Pipeleers D. Nicotinamide protects human beta cells against chemically-induced necrosis, but not against cytokine-induced apoptosis. *Diabetologia* 42:55–59, 1999.

Hoorens A, Stange G, Pavlovic D, Pipeleers D. Distinction between interleukin-1-induced necrosis and apoptosis of islet cells. *Diabetes* 50:551–557, 2001.

Hotamisligil GS, Arner P, Caro JF, Atkinson RL, Spiegelman BM. Increased adipose tissue expression of tumor necrosis factor- α in human obesity and insulin resistance. *Journal of Clinical Investigation* 95:2409–2415, 1995.

Hui H, Dotta F, Di Mario U, Perfetti R. Role of caspases in the regulation of apoptotic pancreatic islet beta-cells death. *Journal of Cellular Physiology* 200:177–200, 2004.

I

Ileva A, Yuan S, Wang RN, Agapitos D, Hill DJ, Rosenberg L. Pancreatic islet cell survival following islet isolation: the role of cellular interactions in the pancreas. *The Journal of Endocrinology* 161:357–364, 1999.

Inayat-Hussain SH, Osman AB, Din LB, Ali AM, Snowden RT, McFarlane M, Cain K. Caspases-3 and -7 are activated in goniiothalamine-induced apoptosis in human Jurkat T-cells. *FEBS Letters* 456:379–383, 1999.

Imler M, Thome M, Hahne M, Schneider P, Hofmann K, Steiner V, Bodmer JL, Scroter M, Burns K, Mattmann C, Rimoldi D, French LE, Schopp J. Inhibition of death receptor signals by cellular FLIP. *Nature* 388:190–195, 1997.

Iwahashi H, Hanafusa T, Eguchi Y, Nakajima H, Miyagawa J, Itoh N, Tomita K, Namba M, Kuwajima M, Noguchi T, Tsujimoto Y, Matsuzawa Y. Cytokine-induced apoptotic cell death in mouse pancreatic β -cell line: inhibition by Bcl-2. *Diabetologia* 39:530–536, 1996.

J

Jaeger C, Brendel MD, Hering BJ, Eckhard M, Bretzel RG. Progressive islet graft failure occurs significantly earlier in autoantibody-positive than in autoantibody-negative IDDM recipients of intrahepatic islet allografts. *Diabetes* 46:1907–1910, 1997.

Jansson L, Eizirik DL, Pipeleers DG, Borg LA, Hellerstrom C, Andersson A. Impairment of glucose-induced insulin secretion in human pancreatic islets transplanted to diabetic nude mice. *Journal of Clinical Investigation* 96:721–726, 1995.

K

Kahn SE, Andrikopoulos S, Verchere CB. Islet amyloid: a long recognized but underappreciated pathological feature of type 2 diabetes. *Diabetes* 48:241–253, 1999.

Kahn SE. The importance of beta-cell failure in the development and progression of type 2 diabetes. *The Journal of Clinical Endocrinology and Metabolism* 86:4047–4058, 2001.

Kaneto H, Fujii J, Seo HG, Suzuki K, Matsuoka T, Nakamura M, Tatsumi H, Yamasaki Y, Kamada T, Taniguchi N. Apoptotic cell death triggered by nitric oxide in pancreatic β -cells. *Diabetes* 44:733–738, 1995.

Kaufman DB, Gores PF, Field MJ, Farney AC, Gruber SA, Stephanian E, Sutherland DE. Effect of 15-deoxyspergualin on immediate function and long-term survival of transplanted islets in murine recipients of a marginal islet mass. *Diabetes* 43:778–783, 1994.

Kaufman DB, Morel P, Field MJ, Munn SR, Sutherland DE. Importance of implantation site and number of islets transplanted on functional outcome following autotransplantation in a canine model. *Hormone Metabolism Research* S25:162, 1990.(a)

Kaufman DB, Platt JL, Rabe FL, Dunn DL, Bach FH, Sutherland DE. Differential roles of Mac-1+ cells, and CD4+ and CD8+ T lymphocytes in primary nonfunction and classic rejection of islet allografts. *The Journal of Experimental Medicine* 172:291–302, 1990.(b)

Karlsen AE, Andersen HU, Vissing H, Larsen PM, Fey SJ, Cuartero BG, Madsen OD, Petersen JS, Mortensen SB, Mandrup-Poulsen T, Boel E, Nerup J. Cloning and expression of cytokine-inducible nitric oxide synthase cDNA from rat islets of Langerhans. *Diabetes* 44:753–758, 1995.

Kenmochi T, Miyamoto M, Mullen Y. Protection of mouse islet isografts from nonspecific inflammatory damage by recipient treatment with nicotinamida and 15-deoxyspergualin. *Cell Transplantation* 5:41–47, 1996.

Kilpatrick ED, Robertson RP. Differentiation between glucose-induced desensitization of insulin secretion and β -cell exhaustion in the HIT-T15 cell line. *Diabetes* 47:606–611, 1998.

Korsgren O, Jansson L, Andersson A. Effects of hyperglycemia on function of isolated mouse pancreatic islets transplanted under kidney capsule. *Diabetes* 38:510–515, 1989.

Kutlu B, Cardozo AK, Darville MI, Kruhoffer M, Orntoft TF, Eizirik DL. Discovery of gene networks regulating cytokine-induced dysfunction and apoptosis in insulin-producing INS-1 cells. *Diabetes* 52:2701–2719, 2003.

L

Larsen CM, Wadt KA, Juhl LF, Andersen HU, Karlsen AE, Su MS, Seedorf K, Shapiro L, Dinarello CA, Mandrup-Poulsen T. Interleukin-1 β -induced rat pancreatic islets nitric oxide synthesis requires both the p38 and extracellular signal-regulated kinase 1/2 mitogen-activated protein kinases. *The Journal of Biological Chemistry* 24:15294–15300, 1998.

Leahy JL, Bumbalo LM, Chen C. Diazoxide causes recovery of β -cell glucose responsiveness in 90% pancreatectomized diabetic rats. *Diabetes* 43:173–179, 1994.

Lee L-F, Xu B, Michie SA, Beilhack GF, Warganich T, Turley S. The role of TNF- α in the pathogenesis of type 1 diabetes in the nonobese diabetic mouse: analysis of dendritic cell maturation. *Proceedings of Natural Academy of Science of USA* 102:15995–16000, 2005.

Leibowitz G, Yuli M, Donath MY, Neshler R, Melloul D, Cerasi E, Gross DJ, Kaiser N. Beta-cell glucotoxicity in the *Psammomys obesus* model of type 2 diabetes. *Diabetes* 50:S113–117, 2001.

Leist M, Nicotera P. The shape of cell death. *Biochemical and Biophysical Research Communications* 236:1–9, 1997.

Lemaire C, Andreau K, Souvannavong V, Adam A. Inhibition of caspase activity induces a switch from apoptosis to necrosis. *FEBS Letters* 425:266–270, 1998.

Li H, Zhu H, Xu CJ, Yuan J. Cleavage of BID by caspase 8 mediates the mitochondrial damage in the Fas pathway of apoptosis. *Cell* 94:491–501, 1998.

Ling Z, Chen M-C, Smismans A, Pavlovic D, Schuit F, Eizirik DL, Pipeelers DG. Intercellular differences in interleukin 1 β -induced suppression of insulin synthesis and stimulation of noninsulin protein synthesis by rat pancreatic β -cells. *Endocrinology* 139:1540–1545, 1998.

- Ling Z, Van de Casteele M, Eizirik DL, Pipeleers D. Interleukin-1 β -induced alteration in a beta cell phenotype can reduce cellular sensitivity to conditions that cause necrosis but not to cytokine-induced apoptosis. *Diabetes* 49:340–345, 2000.
- Lifson N, Kramlinger KG, Mayrand RR, Lender EJ. Blood flow to the rabbit pancreas with special reference to the islets of Langerhans. *Gastroenterology* 79:466–473, 1980.
- Liu D, Pavlovic D, Chen MC, Flodstrom M, Sandler S, Eizirik DL. Cytokines induce apoptosis in β -cells isolated from mice lacking the inducible isoform of nitric oxide synthase (iNOS^{-/-}). *Diabetes* 49:1116–1122, 2000.
- Loweth AC, Williams GT, James RF, Scarpello JH, Morgan NG. Human islets of Langerhans express Fas ligand and undergo apoptosis in response to IL-1 β and Fas ligation. *Diabetes* 47:727–732, 1998.
- Lupi R, Dotta F, Marselli L, Del Guerra S, Masini M, Santangeo C, Patane G, Boggi U, Piro S, Anello M, Bergamini E, Mosca F, Di Mario U, Del Prato S, Marchetti P. Prolonged exposure to Free Fatty Acids has cytostatic and pro-apoptotic effects on human pancreatic islets. Evidence that β -cell death is caspase mediated, partially dependent on ceramide pathway, and Bcl-2 regulated. *Diabetes* 51:1437–1442, 2002.

M

- MacKenzie DA, Hullett DA, Sollinger HW. Xenogeneic transplantation of porcine islets: an overview. *Transplantation* 76:887–891, 2003.
- Maedler K, Donath MY. β -Cells in type 2 diabetes: a loss of function and mass. *Hormone Research* 62 (suppl 3):67–73, 2004.
- Maedler K, Sergeev P, Ris F, Oberholzer J, Joller-Jemelka HI, Spinas GA, Kaiser N, Halban PA, Donath MY. Glucose-induced β -cell production of IL-1 β contributes to glucotoxicity in human pancreatic islets. *The Journal of Clinical Investigation* 110:851–860, 2002.
- Maedler K, Spinas GA, Lehmann R, Sergeev P, Weber M, Fontana A, Kaiser N, Donath MY. Glucose induces β -cell apoptosis via upregulation of the Fas receptor in human islets. *Diabetes* 50:1683–1690, 2001.
- Majno G, Joris I. Apoptosis, oncosis and necrosis: an overview on cell death. *American Journal of Pathology* 146:3–15, 1995.
- Marette A. Mediators of cytokine induced insulin resistance in obesity and other inflammatory setting. *Current Opinion in Clinical Nutrition and Metabolic Care* 5:377–383, 2002.

- Markees TG, Serreze DV, Phillips NE, Sorli CH, Gordon EJ, Shultz LD, Noelle RJ, Woda BA, Greiner DL, Mordes JP, Rossini AA. NOD mice have a generalized defect in their response to transplantation tolerance induction. *Diabetes* 48:967–974, 1999.
- Marselli L, Dotta F, Piro S, Santangelo C, Masini M, Lupi R, Realacci M, del Guerra S, Mosca F, Boggi U, Purrello F, Navalesi R, Marchetti P. Th2 cytokines have a partial, direct protective effect on the function and survival of isolated human islets exposed to combined proinflammatory and Th1 cytokines. *Journal of Clinical Endocrinology and Metabolism* 86:4974–4978, 2001.
- Martinet W, De Meyer GR, Timmermans JP, Hermen AG, Kockx MM. Macrophages but not smooth muscle cells undergo z-VAD.fmk-induced nonapoptotic cell death depending on receptor interacting protein 1 (RIP1) expression: implications for the stabilization of macrophage-rich atherosclerotic plaques. *The Journal of Pharmacology and Experimental Therapeutics* 317:1356–1364, 2006.
- Mathis D, Vence L, Benoist C. Beta-cell death during progression to diabetes. *Nature* 414:792–798, 2001.
- Matsuda T, Omori K, Vuong T, Pascual M, Valiente L, Ferreri K, Todorov I, Kuroda Y, Smith CV, Kandeel F, Mullen Y. Inhibition of p38 pathway suppresses human islet production of proinflammatory cytokines and improves islet graft function. *American Journal of Transplantation* 5:484–493, 2005.
- Meier CA, Bobbioni E, Gabay C, Assimacopoulos-Jeannet F, Golay A, Dayer JM. IL-receptor antagonist serum levels are increased in human obesity: a possible link to the resistance to leptin? *The Journal of Clinical Endocrinology and Metabolism* 87:1184–1188, 2002.
- Mellgren A, Schnell Landstrom AH, Petersson B, Andersson A. The renal subcapsular site offers better growth conditions for transplanted mouse pancreatic islet cells than the liver or spleen. *Diabetologia* 29:670–672, 1986.
- Menger MD, Yamauchi J, Vollmar B. Revascularization and microcirculation of freely grafted islets of Langerhans. *World Journal of Surgery*, 25:509–515, 2001.
- Merino JF, Nacher V, Raurell M, Aranda O, Soler J, Montanya E. Improved outcome of islet transplantation in insulin-treated diabetic mice: effects on beta-cell mass and function. *Diabetologia* 40:1004–1010, 1997.
- Merino JF, Nacher V, Raurell M, Biarnés M, Soler J, Montanya E. Optimal insulin treatment in syngeneic islet transplantation. *Cell Transplantation* 9:11–18, 2000.

- Mocanu MM, Baxter GF, Yellon DM. Caspase inhibition and limitation of myocardial infarct size: protection against lethal reperfusion injury. *British Journal of Pharmacology* 130:197–200, 2000.
- Montaña E, Bonner-Weir S, Weir GC. Beta cell mass and growth after syngeneic islet cell transplantation in normal and streptozotocin diabetic C57BL/6 mice. *The Journal of Clinical Investigation* 91:780–787, 1993.
- Montaña E, Bonner-Weir S, Weir GC. Transplanted beta cell response to increased metabolic demand. Changes in beta cell replication and mass. *The Journal of Clinical Investigation* 93:1577–1582, 1994.
- Montanya E. El trasplante de islotes de pancreas como terapia en la diabetes tipo 1. *Endocrinología y Nutrición* 48:1–3, 2001.
- Montanya E, Nacher V, Biarnes M, Soler J. Linear correlation between beta-cell mass and body weight throughout life in Lewis rats: role of beta cell hyperplasia and hypertrophy. *Diabetes* 49:1341–1346, 2000.
- Mossmann TR, Cherwinski H, Bond MW, Giedlin MA, Coffman RL. Two types of murine helper T cell clone 1. Definition according to profiles of lymphokine activities and secreted proteins. *Journal of Immunology* 136:2348–2357, 1986.
- Muller S, Martin S, Koenig W, Hanifi-Moghaddam P, Rathmann W, Haastert B, Giani G, Illig T, Thorand B, Kolb H. Impaired glucose tolerance is associated with increased serum concentrations of interleukin 6 and co-regulated acute-phase proteins but not TNF-alpha or its receptors. *Diabetologia* 45:805–812, 2002.

N

- Naftanel MA, Harlan DM. Pancreatic islet transplantation. *PloS Medicine*, 1:198–201, 2004.
- Nagata M, Mullen Y, Matsuo S, Herrera M, Clare-Salzler M. Destruction of islet isografts by severe nonspecific inflammation. *Transplantation Proceedings* 22:855–856, 1990.
- Navarro X, Sutherland DER, Kennedy WR. Long-term effects of pancreatic transplantation on diabetic neuropathy. *Annals of Neurology* 42:727–736, 1997.

O

- Olson LK, Redmon JB, Towle HC, Robertson RP. Chronic exposure of HIT cells to high glucose concentrations paradoxically decreases insulin gene transcription and alters binding of insulin gene regulatory protein. *The Journal of Clinical Investigation* 92:514–519, 1993.
- Olson LK, Sharma A, Peshavaria M, Wright CV, Towle HC, Robertson RP, Stein R. Reduction of insulin gene transcription in HIT-T15 cells chronically exposed to a supraphysiologic glucose concentration is associated with loss of STF-1 transcription factor expression. *Proceedings of the National Academy of Sciences of USA* 92:9127–9131, 1995.
- Ozasa T, Newton MR, Dallman MJ, Shimizu S, Gray DW, Morris PJ. Cytokine gene expression in pancreatic islet grafts in the rat. *Transplantation* 64:1152–1159, 1997.

P

- Parr EL, Bowen KM, Lafferty KJ. Cellular changes in cultures of mouse thyroid glands and islets of Langerhans. *Transplantation* 30:135–141, 1980.
- Perneger TV. What's wrong with Bonferroni adjustments. *The British Medical Journal* 316:1236–1238, 1998.
- Pickup JC, Crook MA. Is type II diabetes mellitus a disease of the innate immune system? *Diabetologia* 41:1241–1248, 1998.
- Pictet RL, Clark WR, Williams RH, Rutter WJ. An ultrastructural analysis of the developing embryonic pancreas. *Developmental Biology* 29:436–467, 1972.
- Pipeleers D, Hoorens A, Marichal-Pipeleers M, van de Casteele M, Bouwens L, Ling Z. Role of pancreatic β -cells in the process of β -cell death. *Diabetes* 50:S52–S57, 2001.
- Pipeleers D, van de Winkel M. Pancreatic B cells possess defense mechanisms against cell-specific toxicity. *Proceedings of the National Academy of Sciences of USA* 83:5267–5271, 1986.
- Pitout V, Robertson RP. Minireview: secondary β -cell failure in type 2 diabetes—A convergence of glucotoxicity and lipotoxicity. *Endocrinology* 143:339–342, 2002.
- Prendergast GC. Mechanisms of apoptosis by c-Myc266. *Oncogene* 18:2967–2987, 1999.
- Prowse SJ, Bellgrau D, Lafferty KJ. Islet allografts are destroyed by disease occurrence in the spontaneously diabetic BB rat. *Diabetes* 35:110–114, 1986.

Puthalakath H, Huang DC, O'Reilly LA, King SM, Strasser A. The proapoptotic activity of the Bcl-2 family member Bim is regulated by interaction with the dynein motor complex. *Molecular Cell* 3:287–296, 1999.

R

Rabinovitch A. An update on cytokines in the pathogenesis of insulin-dependent Diabetes Mellitus. *Diabetes and Metabolism Reviews* 14:129–151, 1998.

Rabinovitch A, Suarez-Pinzon WL, Strynadka K, Ju Q, Edelstein D, Brown-Lee M, Korbitt GS, Rajotte RV. Transfection of human pancreatic islets with an anti-apoptotic gene (bcl-2) protects β -cells from cytokine-induced destruction. *Diabetes* 48:1223–1229, 1999.

Rabinovitch A, Suarez-Pinzon WL. Cytokines and their roles in pancreatic islet β -cell destruction and insulin-dependent diabetes mellitus. *Biochemical Pharmacology* 55:1139–1149, 1998.

Rabinovitch A, Suarez-Pinzon WL. Role of cytokines in the pathogenesis of autoimmune diabetes mellitus. *Reviews in Endocrine and Metabolic Disorders* 4:291–299, 2003.

Ramiya VK, Maraist M, Arfors KE, Schatz DA, Peck AB, Cornelius JG. Reversal of insulin-dependent diabetes using islets generated in vitro from pancreatic stem cells. *Nature Medicine* 6:278–282, 2000.

Raurell M, Merino JF, Nacher V, Biarnes M, Soler J, Montanya E. Preserved beta cell function with insulin treatment in islet transplantation: effect on insulin gene expression. *Transplantation Proceedings* 31:2561, 1999.

Reed JC. Double identity for proteins of the Bcl-2 family. *Nature* 387:773–776, 1997.

Rich T, Allen RL, Wyllie AH. Defying death after DNA damage. *Nature* 407:777–783, 2000.

Ricordi C, Alejandro R, Angelico CA, Fernandez KA, Nery J, Webb M, Bottino R, Selvaggi G, Khan FA, Karatzas T, Olson L, Mintz DH, Tzakis AG. Human islet allografts in patients with type 2 diabetes undergoing liver transplantation. *Transplantation* 63:473–475, 1997.

Ricordi C, Inverardi L. Towards protection of the islands in the (blood)stream. *Transplantation* 69:708–709, 2000.

Ricordi C, Lacy PE, Finke EH, Olack BJ, Scharp DW. Automated method for isolation of human pancreatic islets. *Diabetes* 37:413–420, 1988.

Ricordi C, Tzakis AG, Carroll PB, Zeng YJ, Rilo HL, Alejandro R. Human islet isolation and allotransplantation in 22 consecutive cases. *Transplantation* 53:407–414, 1992.

Bibliografia

- Ris F, Hammar E, Bosco D, Pilloud C, Maedler K, Donath MY, Oberholzer J, Zeender E, Morel P, Rouiller D, Halban PA. Impact of integrin-matrix matching and inhibition of apoptosis on the survival of purified human beta-cells in vitro. *Diabetologia* 45:841–850, 2002.
- Robertson RP, Davis C, Larsen J, Stratta R, Sutherland DER. Pancreas and islet transplantation for patients with diabetes. *Diabetes Care* 23:112–116, 2000.
- Robertson RP, Olson LK, Zhang HJ. Differentiating glucose toxicity from glucose desensitization: a new message from insulin gene. *Diabetes* 43:1085–1089, 1994.
- Robertson RP, Tanaka Y, Takahashi H, Tran PO, Harmon JS. Prevention of oxidative stress by adenoviral overexpression of glutathione-related enzymes in pancreatic islets. *Annals of the New York Academy of Sciences* 1043:513–520, 2005.
- Rodriguez-Mulero S, Montanya E. Selection of a suitable internal control gene for expression studies in pancreatic islet grafts. *Transplantation* 80:650–652, 2005.
- Roep BO, Stobbe I, Duinkerken G, Van Rood JJ, Lenmark A, Keymeulen B, Pipeleers D, Class FHJ, De Vries RRP. Auto- and alloimmune reactivity to human islet allografts transplanted into type 1 diabetic patients. *Diabetes* 48:484–490, 1999.
- Ryan EA, Lakey JRT, Paty BW, Imes S, Korbutt GS, Kneteman NM, Bigam D, Rajotte RV, Shapiro AMJ. Successful islet transplantation. Continued insulin reseve provides long-term glycemic control. *Diabetes* 51:2148–2157, 2002.
- Ryan EA, Paty BW, Senior PA, Bigam D, Alfadhli E, Kneteman NM, Lakey JRT, Shapiro AMJ. Five-year follow-up after clinical islet transplantation. *Diabetes* 54:2060–2069, 2005.

S

- Saldeen J, Lee JC, Welsh N. Role of p38 mitogen-activated protein kinase (p38 MAPK) in cytokine-induced rat islet cell apoptosis. *Biochemical Pharmacology* 61:1561–1569, 2001.
- Saldeen J. Cytokines induce both necrosis and apoptosis via a common bcl-2-inhibitable pathway in rat insulin producing cells. *Endocrinology* 141:2003–2010, 2000.
- Scaglia L, Cahill CJ, Finegood DT, Bonner-Weir S. Apoptosis participates in the remodeling of the endocrine pancreas in the neonatal rat. *Endocrinology* 138:1736–1741, 1997.
- Scaglia L, Smith FE, Bonner-Weir S. Apoptosis contributes to the involution of beta cell mass in the post partum rat pancreas. *Endocrinology* 136:5461–5468, 1995.

- Scharp DW, Lacy PE, Santiago JV, McCullough CS, Weide LG, Boyle PJ. Results of our first nine intraportal islet allografts in type 1, insulin-dependent diabetic patients. *Transplantation* 51:73–85, 1991.
- Scharp DW, Lacy PE, Santiago JV, McCullough CS, Weide LG, Falqui L, Marchetti P, Gingerich RL, Jaffe AS, Cryer PE, et al. Insulin independence after islet transplantation into type 1 diabetic patient. *Diabetes* 39:515–518, 1990.
- Schierle GS, Hansson O, Leist M, Nicotera P, Widner H, Brundin P. Caspase inhibition reduces apoptosis and increases survival of nigral transplants. *Nature Medicine* 5:97–100, 1999.
- Schnedl WJ, Ferber S, Johnson JH, Newgard CB. STZ transport and cytotoxicity. Specific enhancement in Glut-2-expressing cells. *Diabetes* 43:1326–1333, 1994.
- Schroder M, Kaufman RJ. ER stress and the unfolded protein response. *Mutation Research* 569:29–63, 2005.
- Shapiro AMJ, Lakey JRT, Paty BW, Senior PA, Bigam DL, Ryan EA. Strategic opportunities in Clinical Islet Transplantation. *Transplantation* 79:1304–1307, 2005.
- Shapiro AMJ, Lakey JRT, Ryan EA, Korbitt GS, Toth E, Warnock GL, Kneteman NM, Rajotte RV. Islet transplantation in seven patients with type 1 diabetes mellitus using a glucocorticoid-free immunosuppressive regimen. *The New England Journal of Medicine* 343:230–238, 2000.
- Shapiro AMJ, Ricordi C, Hering B. Edmonton's islet success has indeed been replicated elsewhere. *The Lancet*: 1242, 2003.
- Signore A, Annovazzi A, Procaccini E, Beales PE, Spencer J, Testi R, Ruberti G. CD95 and CD95-ligand expression in endocrine pancreas of NOD, NOR, and BALB/c mice. *Diabetologia* 40:1476–1479, 1997.
- Sjöholm Å. Inhibition of fetal rat pancreatic β -cell replication by interleukin-1 β in vitro is not mediated through pertussis toxin-sensitive G-proteins, a decrease in cyclic AMP, or protease activation. *FEBS Letters* 289:249–252, 1991.
- Slee EA, Zhu H, Chow SC, McFalane M, Nicholson DW, Cohen GM. Benzylloxycarbonyl-Val-Ala-Asp (OMe) fluoromethylketone (z-VAD.fmk) inhibits apoptosis by blocking the processing of CPP32. *The Biochemical Journal* 315:21–24, 1996.
- Soria B, Roche E, Berna G, Leon-Quinto T, Reig JA, Martin F. Insulin-secreting cells derived from embryonic stem cells normalize glycemia in streptozotocin-induced diabetic mice. *Diabetes* 49:157–162, 2000.

Bibliografia

- Southern C, Schulster D, Green IC. Inhibition of insulin secretion from rat islets of Langerhans by interleukin-6. *Biochemical Journal* 272:243–245, 1990.
- Sperandio S, de Belle I, Bredesen DE. An alternative, nonapoptotic form of programmed cell death. *Proceedings of the National Academy of Sciences of USA* 97:14376–14378, 2000.
- Spinas GA, Palmer JP, Mandrup-Poulsen T, Andersen H, Nilsen JH, Nerup J. The bimodal effect of interleukin 1 on rat pancreatic beta-cells —stimulation followed by inhibition— depends on dose, duration of exposure, and ambient glucose concentration. *Acta Endocrinol (Copenh)* 119:307–311, 1988.
- Stassi G, De Maria R, Trucco G, Rudert W, Testi R, Galluzzo A, Giordano C, Trucco M. Nitric oxide primes pancreatic β cells for Fas-mediated destruction in insulin-dependent diabetes mellitus. *Journal of Experimental Medicine* 186:1193–1200, 1997.
- Stassi G, Todaro M, Richiusa P, Giordano M, Mattina A, Sbriglia MS, Lo MA, Buscemi G, Galluzzo A, Giordano C. Expression of apoptosis-inducing CD95 (Fas/Apo-1) on human beta-cells sorted by flow-cytometry and cultured in vitro. *Transplantation Proceedings* 27:3271–3275, 1995.
- Stegall MD, Lafferty KJ, Kam I, Gill RG. Evidence of recurrent autoimmunity in human allogeneic islet transplantation. *Transplantation* 63:1272–1274, 1996.
- Stephanian E, Lloveras JJ, Sutherland DE, Farney AC, Field MJ, Kaufman DB, Matteson BD, Gores PF. Prolongation of canine islet allograft survival by 15-deoxyspergualin. *The Journal of Surgical Research* 52:621–624, 1992.
- Suarez-Pinzon W, Sorensen O, Bleackley RC, Elliott JF, Rajotte RV, Rabinovitch A. Beta-cell destruction in NOD mice correlates with Fas (CD95) expression on beta-cells and proinflammatory cytokine expression in islets. *Diabetes* 48:21–28, 1999.
- Swenne I. Effects of aging on the regenerative capacity of the pancreatic beta-cell of the rat. *Diabetes* 32:14–19, 1983.

T

- Tanaka Y, Gleason CE, Tran POT, Harmon JS, Robertson RP. Prevention of glucose toxicity in HIT-T15 cells and Zucker diabetic fatty rats by antioxidants. *Proceedings of the National Academy of Sciences of USA* 96:10857–10862, 1999.
- Tanaka Y, Tran POT, Harmon J, Robertson RP. A role of glutathione peroxidase in protecting pancreatic β cells against oxidative stress in a models of glucose toxicity. *Proceedings of the National Academy of Sciences of USA* 99:1263–1268, 2002.

- Télez N, Montolio M, Biarnés M, Castano E, Soler J, Montanya E. Adenoviral overexpression of interleukin-1 receptor antagonist protein increases beta-cell replication in rat pancreatic islets. *Gene Therapy* 12:120–128, 2005.
- Thomas FT, Contreras JL, Bilbao G, Ricordi C, Curiel D, Thomas JM. Anoikis, extracellular matrix, and apoptosis factors in isolated cell transplantation. *Surgery* 126:299–304, 1999.
- Thompson SC, Mandel TE. Fetal pig pancreas. Preparation and assessment of tissue for transplantation, and its in vivo development and function in athymic (nude) mice. *Transplantation* 49:571–581, 1990.
- Thornberry N, Lazebnik Y. Caspases: enemies within. *Science* 281:1312–1316, 1998.
- Tisch R, MacDevitt H. Insulin-dependent diabetes mellitus. *Cell* 85:291–297, 1996.
- Tobin BW, Lewis JT, Chen DZ, Finegood DT. Insulin secretory function in relation to transplanted islet mass in STZ-induced diabetic rats. *Diabetes* 42:98–105, 1993.
- Tyden G, Reinholt FP, Sundkvist G, Bolinder J. Recurrence of autoimmune diabetes mellitus in recipients of cadaveric pancreatic grafts. *The New England Journal of Medicine* 335:860–863, 1996.
- Tzakis AG, Ricordi C, Alejandro R, Zeng Y, Fung JJ, Todo S, Demetris AJ, Mintz DH, Starzl TE. Pancreatic islet transplantation after upper abdominal exenteration and liver replacement. *The Lancet* 336:402–405, 1990.

U

- Unger RH. Lipotoxicity in the pathogenesis of obesity-dependent NIDDM. Genetic and clinical implications. *Diabetes* 44:863–870, 1995.
- User Bulletin #2, ABI Prism[®] 7700 Sequence Detection System, Relative Quantitation of Gene Expression. Applied Biosystems, 1997.

V

- Vargas F, Vives-Pi M, Somoza N, Armengol P, Alcalde L, Martí M, Costa M, Serradell L, Dominguez O, Fernandez-Llamazares J, Julian JF, Sanmarti A, Pujol-Borrell R. Endotoxin contamination may be responsible for the unexplained failure of human pancreatic islet transplantation. *Transplantation* 65:722–727, 1998.
- Villa P, Kaufmann SH, Earnshaw WC. Caspases and caspase inhibitors. *Trends in Biochemical Sciences* 22:388–393, 1997.

Vives-Pi M, Somoza N, Fernandez-Alvarez J, Vargas F, Caro P, Alba R, Gomis R, Labeta MO, Pujol-Borrell R. Evidence of expression of endotoxin receptors CD14, toll-like receptors TLR4 and TLR2 and associated molecule MD-2 and of sensitivity to endotoxin (LPS) in islet beta cells. *Clinical and Experimental Immunology* 133:208–218, 2003.

Vizzardelli C, Molano R, Pileggi A, Berney T, Cattani P, Fenjves ES, Peel A, Fraker C, Ricordi C, Inverardi L. Neonatal porcine pancreatic cell clusters as a potential source for transplantation in humans: characterization of proliferation, apoptosis, xenoantigen expression and gene delivery with recombinant AAV. *Xenotransplantation* 9:14–24, 2002.

W

Wadt KA, Larsen CM, Andersen HU, Nielsen K, Karlens AE, Mandrup-Poulsen T. Ciliary neurotrophic factor potentiates the β -cell inhibitory effect of IL-1 β in rat pancreatic islets associated with increased nitric oxide synthesis and increased expression of inducible nitric oxide synthase. *Diabetes* 47:1602–1608, 1998.

Warnock GL, Dabbs KD, Evans MG, Gattal MS, Kneteman NM, Rajotte RV. Critical mass of islets that function after implantation in a large mammalian. *Hormone Metabolism Research* S25:156–161, 1990.

Warnock GL, Kneteman NM, Ryan EA, Rabinovitch A, Rajotte RV. Long-term follow-up after transplantation of insulin-producing pancreatic islets into patients with type 1 (insulin-dependent) diabetes mellitus. *Diabetologia* 35:89–95, 1992.

Warnock GL, Rajotte, RV. Critical mass of purified islets that induce normoglycemia after implantation into dogs. *Diabetes* 37:467–470, 1988.

Weibel ER. Point counting methods. In *Stereological Methods*. Vol 1. London, Academic Press, p.101–161, 1979.

Weir GC, Bonner-Weir S, Leahy JL. Islet mass and function in diabetes and transplantation. *Diabetes* 90:401–405, 1990.

Weir GC, Quickel RR, Yoon KH, Tatarkiewicz K, Ulrich TR, Hollister-Lock J, Bonner-Weir S. Porcine neonatal pancreatic cell clusters (NPCCs): a potential source of tissue for islet transplantation. *Annals of Transplantation* 2:63–68, 1997.

Welsh N, Cnop M, Kharroubi I, Bugliani M, Lupi R, Marchetti P, Eizirik DL. Is there a role for locally produced interleukin-1 in the deleterious effects of high glucose or type 2 diabetes milieu to human pancreatic islets? *Diabetes* 54:3238–3244, 2005.

- Welsh N, Margulis B, Borg LA, Wiklund HJ, Saldeen J, Flodström M, Mello MA, Andersson A, Pipeleers DG, Helleström C, Eizirik DL. Differences in the expression of heat-shock proteins and antioxidant enzymes between human and rodent pancreatic islets: implications for the pathogenesis of insulin-dependent diabetes mellitus. *Molecular Medicine* 1:806–820, 1995.
- Wiegand F, Kröncke K-D, Kolb-Bachofen V. Macrophage-generated nitric oxide as cytotoxic factor in destruction of alginate-encapsulated islets. Protection by arginine analogs and/or coencapsulated erythrocytes. *Transplantation* 56:1206–1212, 1993.
- Wild S, Roglic G, Green A, Sicree R, King H. Global prevalence of diabetes: estimates for the year 2000 and projections for 2030. *Diabetes Care* 27:1047–1053, 2004.
- Wolter KG, Hsu YT, Smith CL, Nechushtan A, Xi XG, Youle RJ. Movement of Bax from the cytosol to mitochondria during apoptosis. *The Journal of Cellular Biology* 139:1281–1292, 1997.

X

- Xiang J, Chao DT, Korsmeyer SJ. BAX-induced cell death may not require interleukin 1 β -converting enzyme-like proteases. *Proceedings of the National Academy of Science of USA* 93:14559–14563, 1996.

Y

- Yakolev AG, Knobloch SM, Fan L, Fox GB, Goodnight R, Faden AI. Activation of Cpp32-like caspases contributes to neuronal apoptosis and neurological dysfunction after traumatic brain injury. *The Journal of Neurosciences* 17:7415–7424, 1997.
- Yamada K, Takane N, Otabe S, Inada C, Inoue M, Nonaka K. Pancreatic beta-cell-selective production of tumor necrosis factor- α induced by interleukin-1. *Diabetes* 42:1026, 1993.
- Yamamoto H, Uchigata Y, Okamoto H. Streptozotocin and alloxan induce DNA strand breaks and poly (ADP-ribose) synthetase in pancreatic islets. *Nature* 294:284–286, 1981.
- Yasunami Y, Kojo S, Kitamura H, Toyofuku A, Satoh M, Nakano M, Nabeyama K, Nakamura Y, Matsuoka N, Ikeda S, Tanaka M, Ono J, Nagata N, Ohara O, Taniguchi M. V α 14 NKT cell-triggered IFN- γ production by Gr-1+CD11b+ cells mediates early graft loss of syngeneic transplanted islets. *Journal of Experimental Medicine* 202:913–918, 2005.
- Yin XM, Wang K, Gross A, Zhao Y, Zinkel S, Klocke B, Roth KA, Korsmeyer SJ. Bid-deficient mice are resistant to Fas-induced hepatocellular apoptosis. *Nature* 400:886–891, 1999.

Bibliografia

Yki-Järvinen H. Glucose toxicity. *Endocrine Reviews* 13:415–431, 1992.

Z

Zhang YC, Molano RD, Pileggi A, Powers M, Cross J, Wasserfall C, Scott-Jorgensen M, Cambell-Thompson M, Crawford JM, Flotte T, Ellis TM, Ricordi C, Atkinson MA, Inverardi L. Adeno-associated virus transduction of islets with interleukin-4 results in impaired metabolic function in syngeneic marginal islet mass transplantation. *Transplantation* 74:1184–1186, 2002.

Zhang YC, Pileggi A, Agarwal A, Molano RD, Powers M, Brusko T, Wasserfall C, Goudy K, Zahr E, Poggioli R, Scott-Jorgensen M, Cambell-Thompson M, Crawford JM, Nick H, Flotte T, Ellis TM, Ricordi C, Inverardi L, Atkinson MA. Adeno-associated virus-mediated IL-10 gene therapy inhibits diabetes recurrence in syngeneic islet cell transplantation of NOD mice. *Diabetes* 52:708–716, 2003.