

IMPARTIR ÉS COMPARTIR

Anàlisi i conclusions dels set cursos d'introducció a l'Arquitectura i al Projecte, realitzats a l'ETSAV.

T E S I D O C T O R A L

TUTOR:

ALBERT VIAPLANA

AUTOR:

PERE RIERA PAÑELLAS

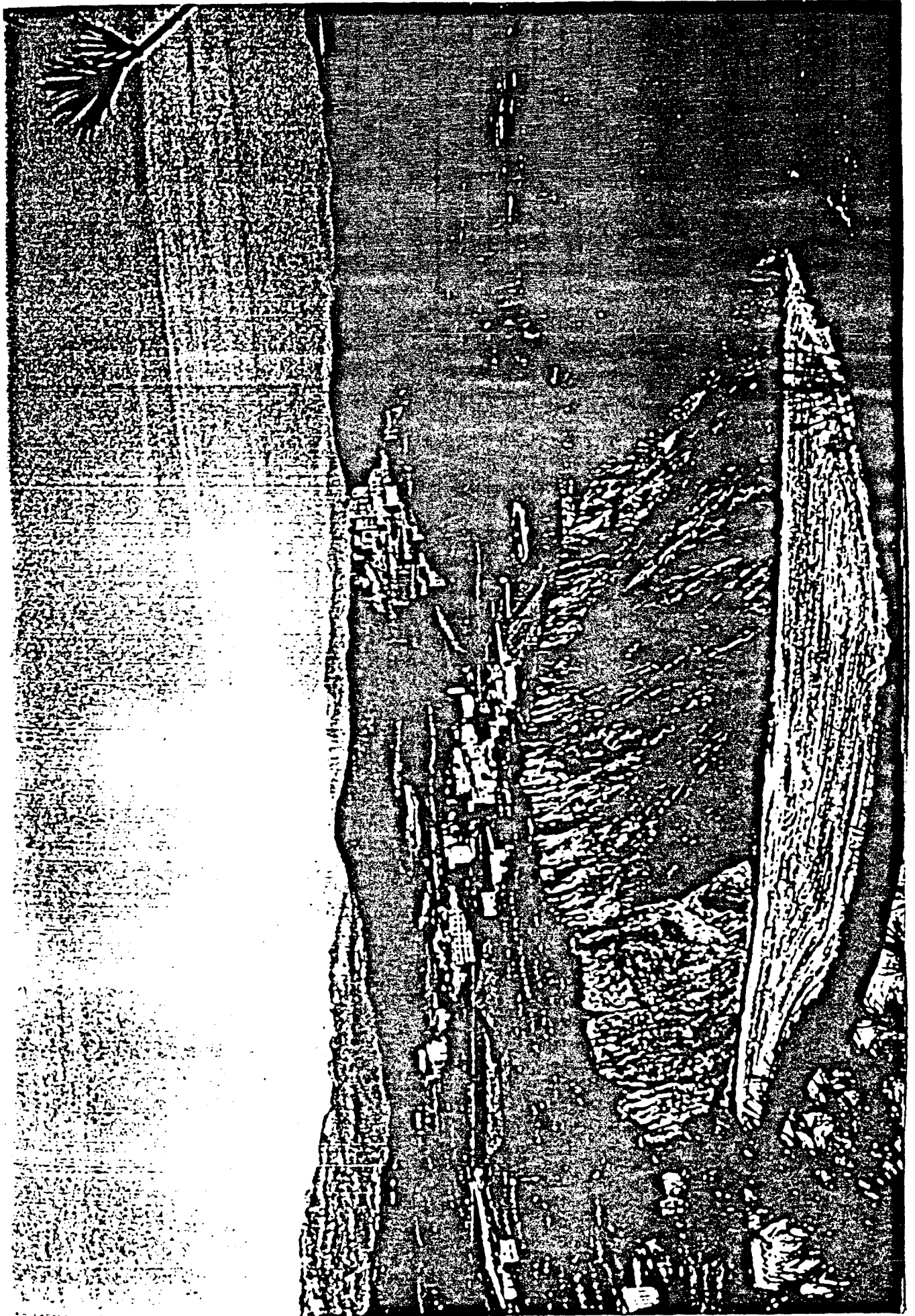
Gener 1987



ARQUITECTOS: JOSEF M. GUTIERREZ, JORDI PARCERISAS.

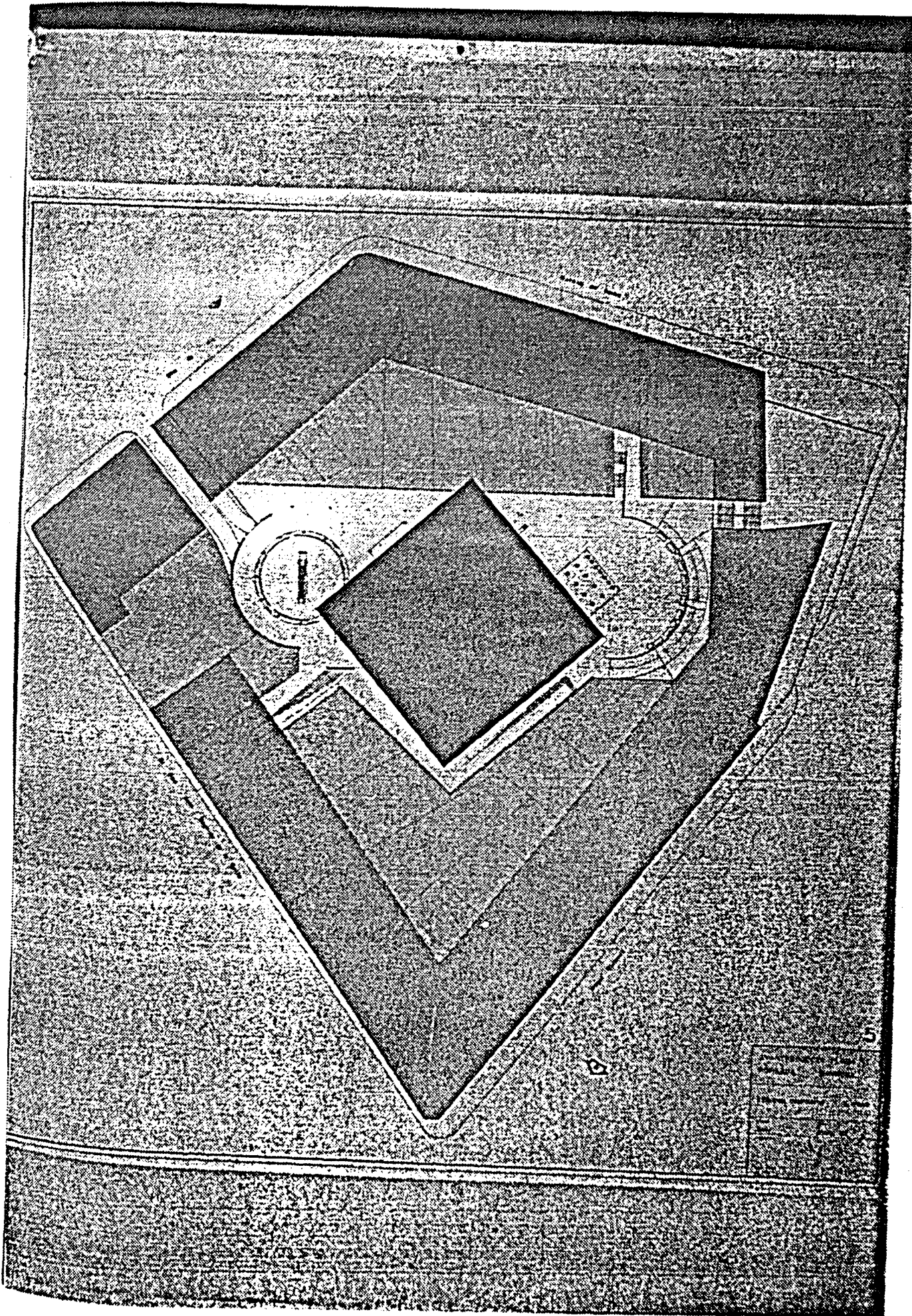
PROJECTE DE PAISATGE

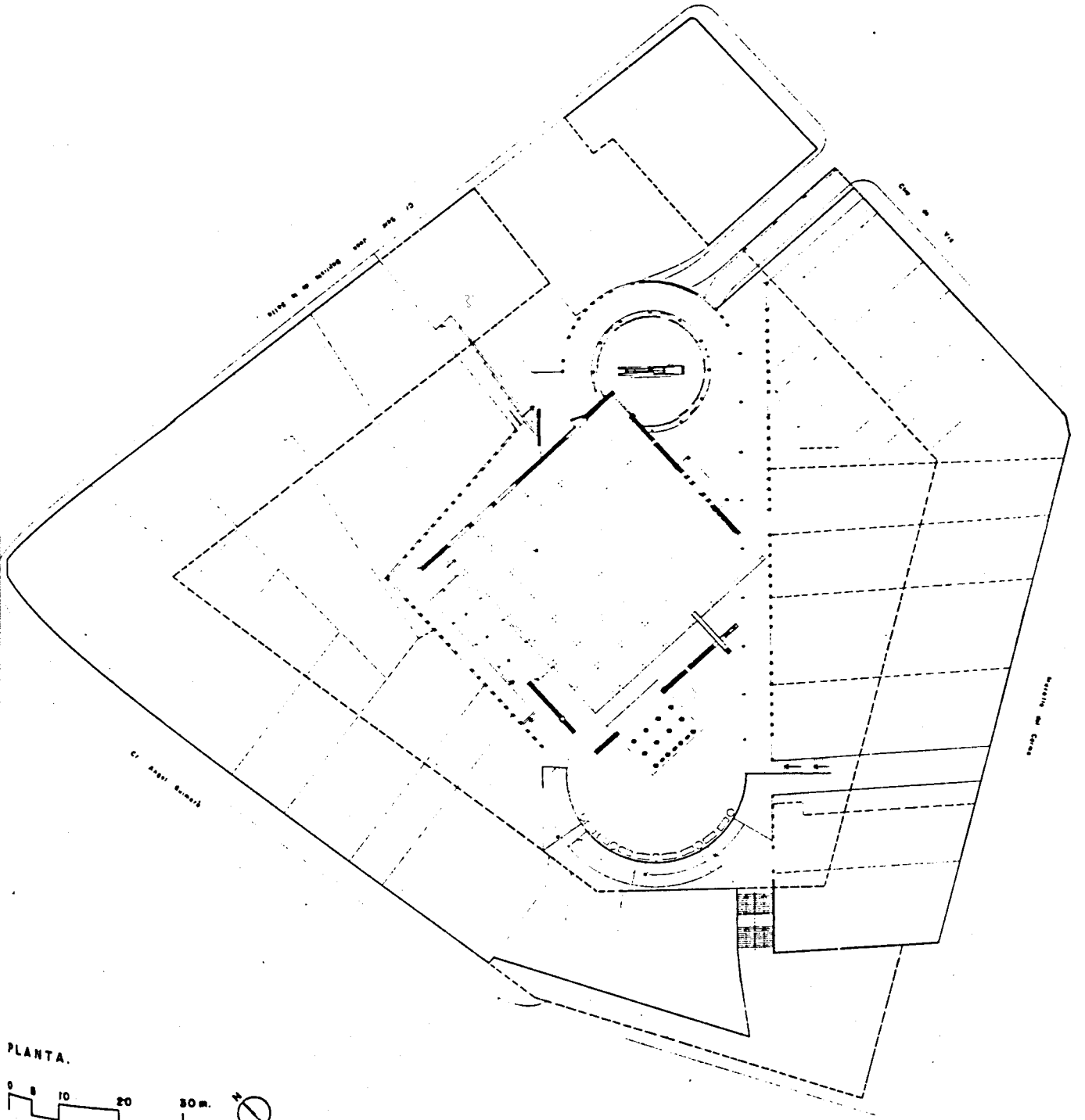
E: 1/5000



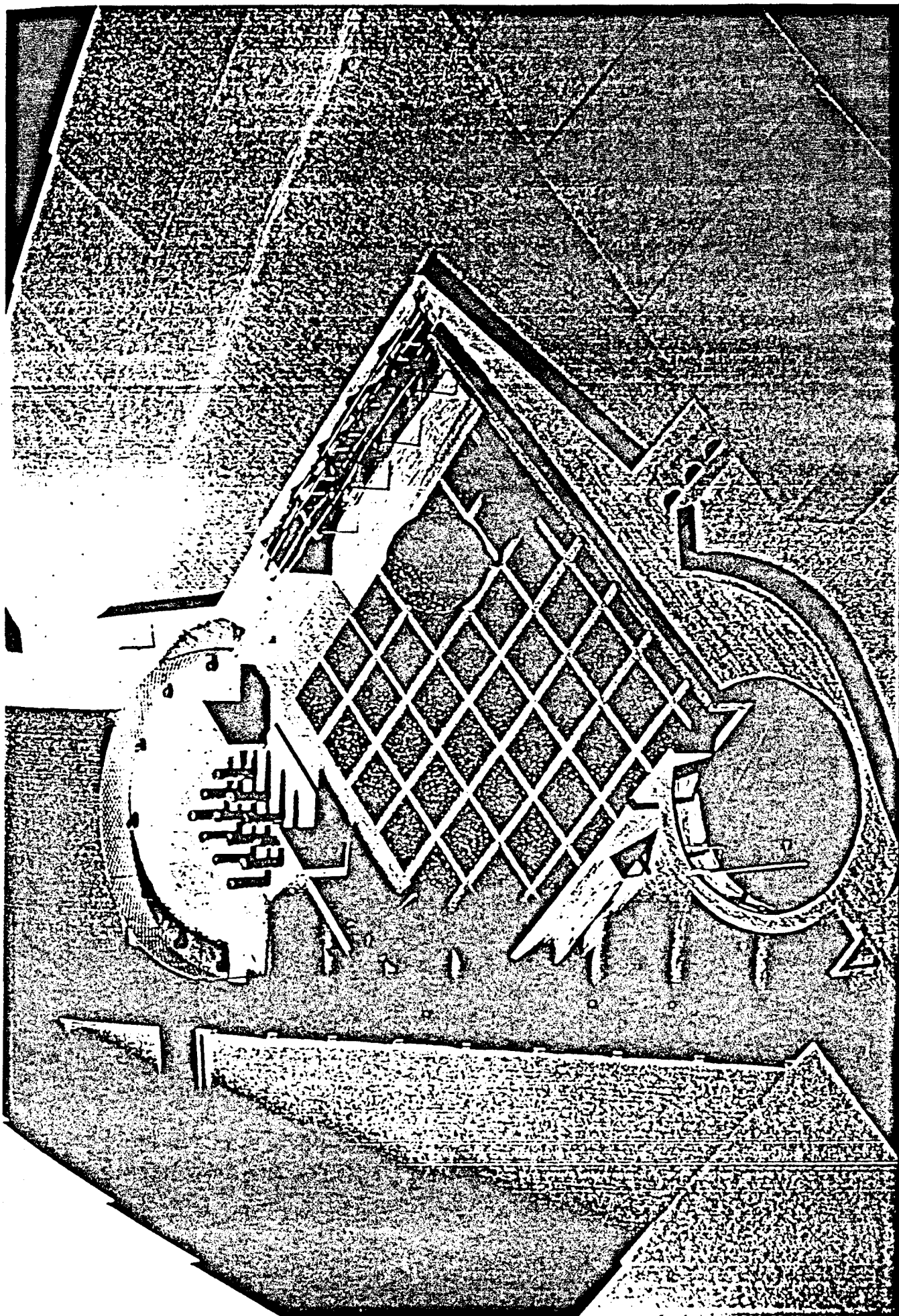
5. PLAÇA PORXADA. MANRESA



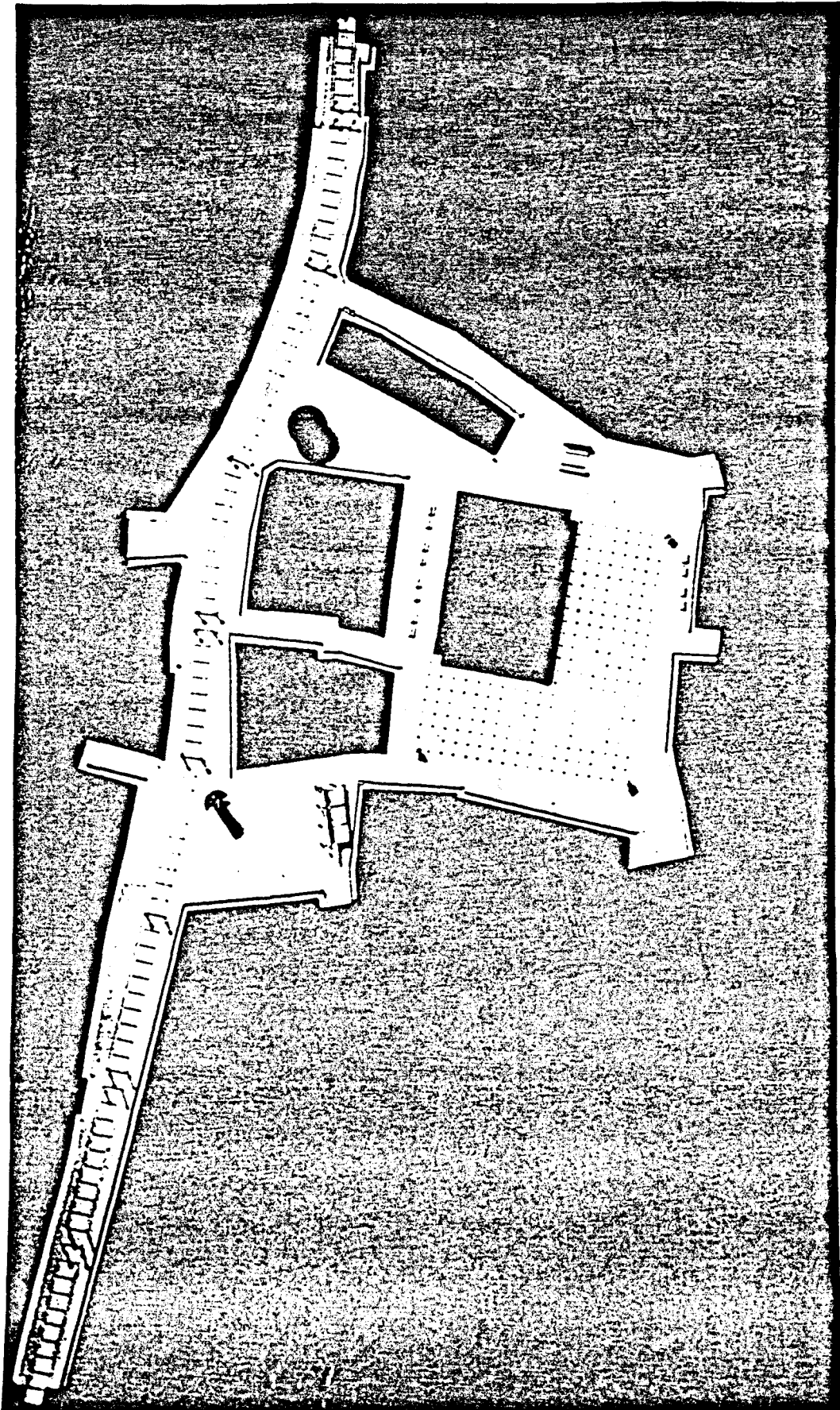


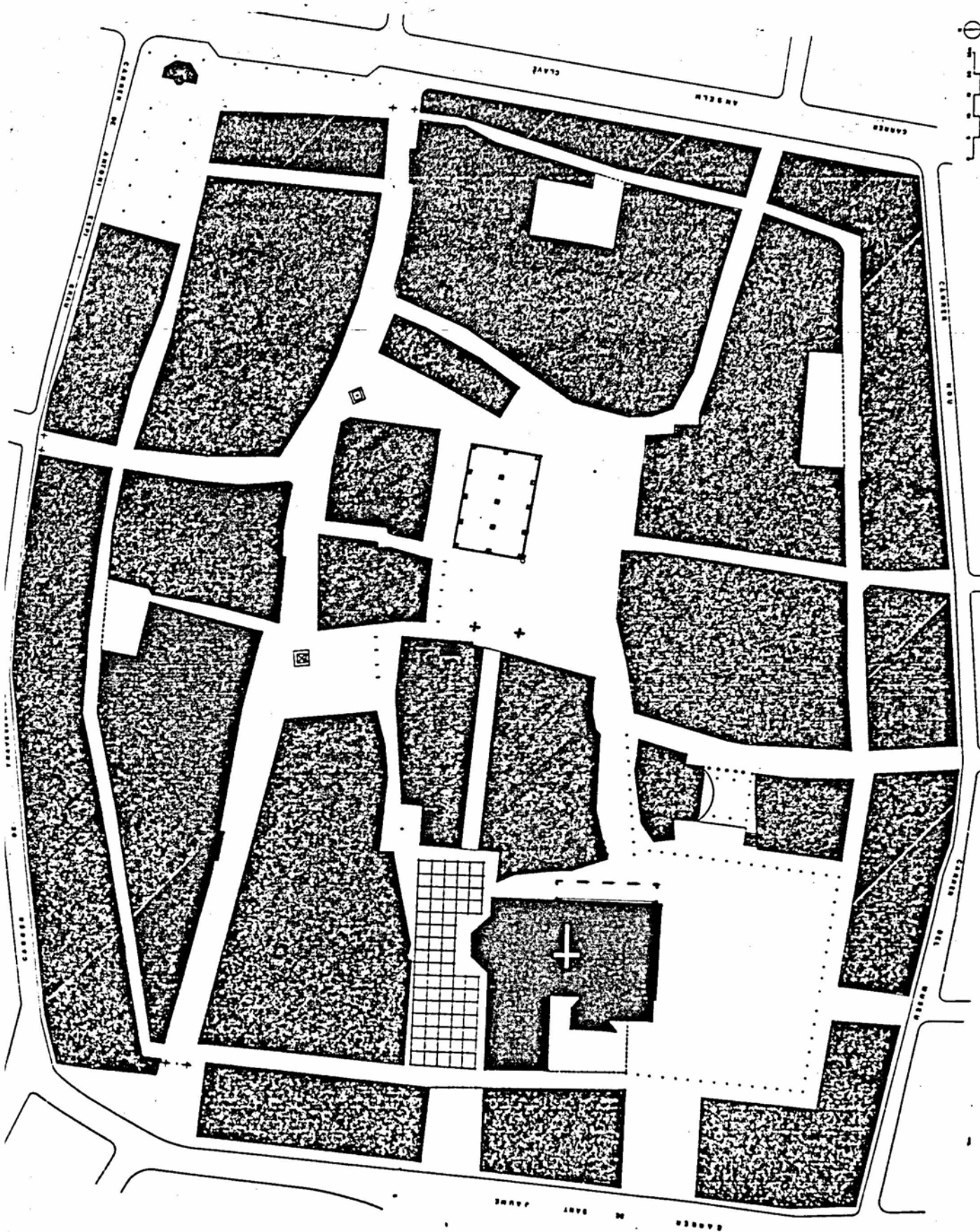


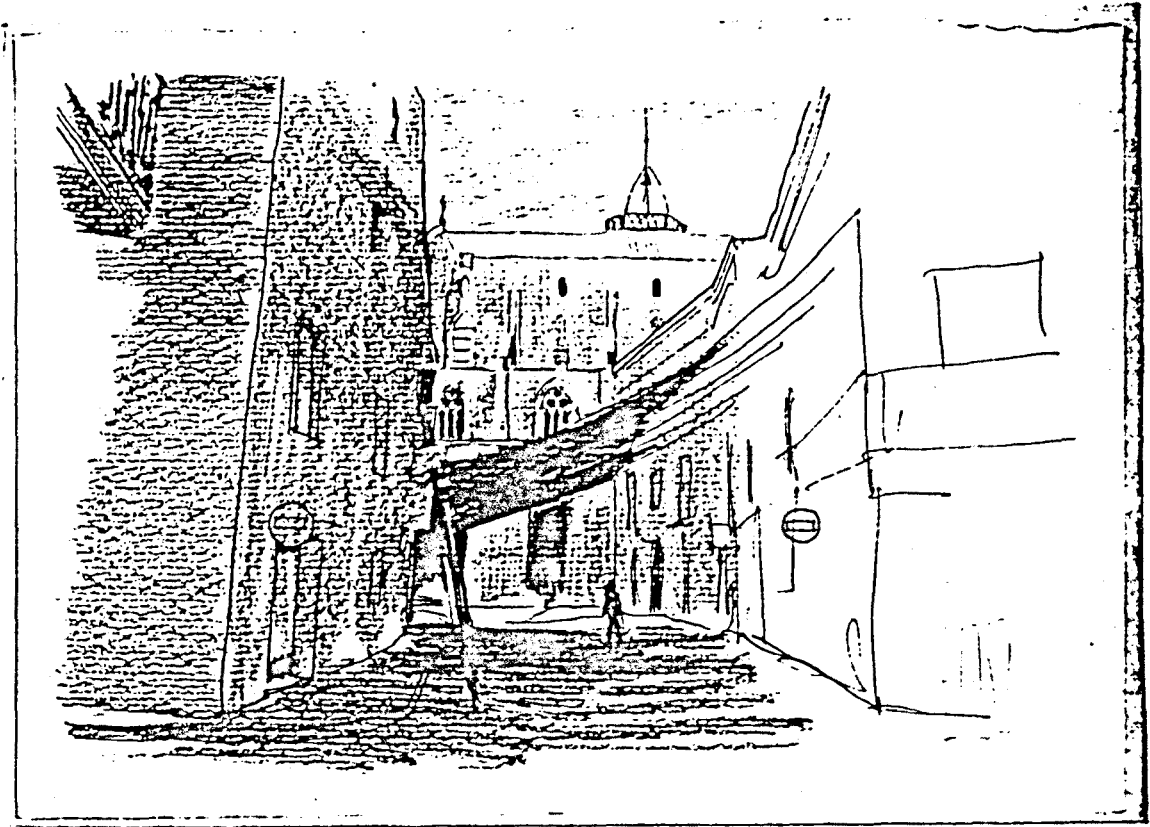
PLANTA.

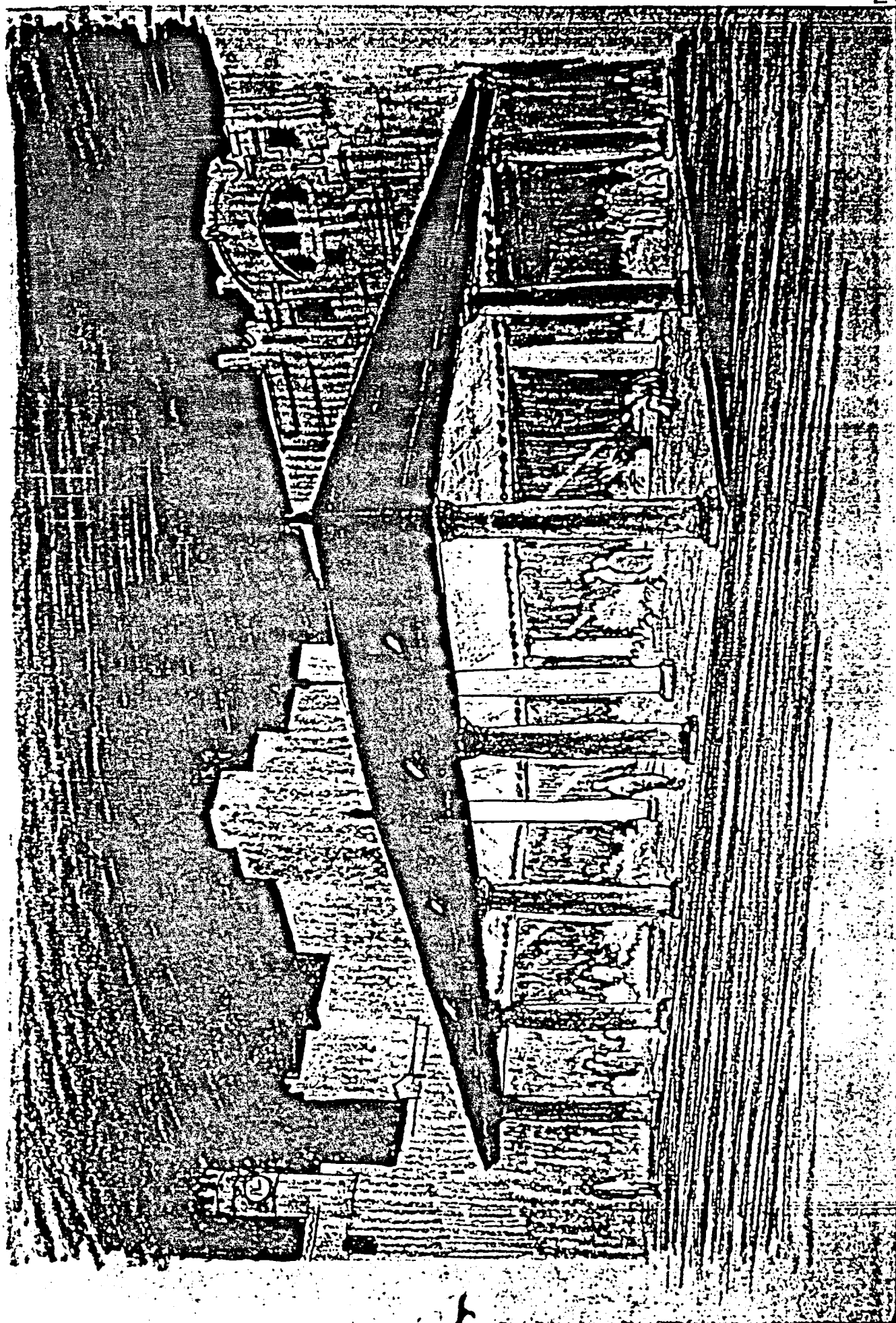


6. REMODELACIÓ CASC ANTIC. GRANOLLERS

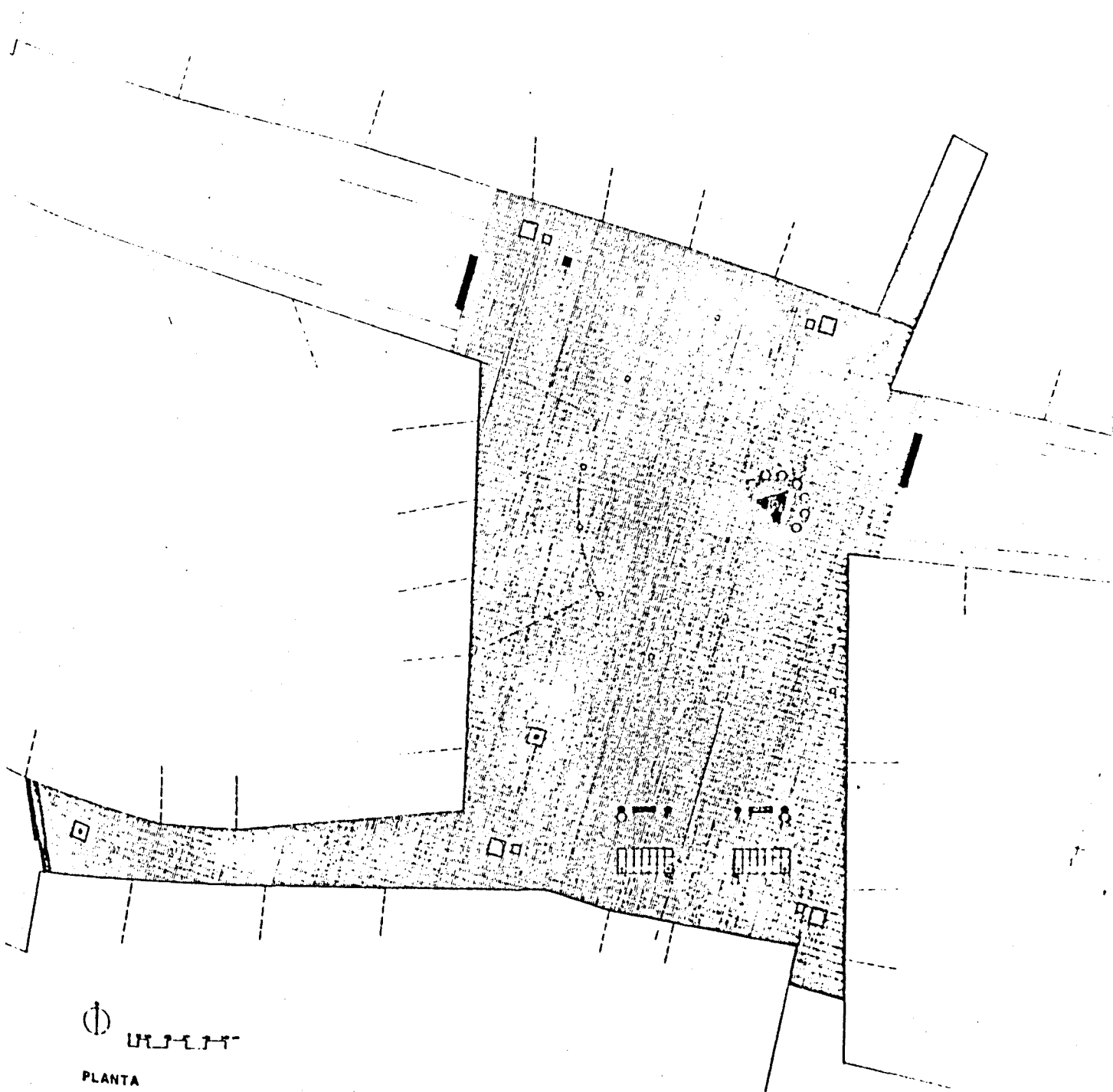




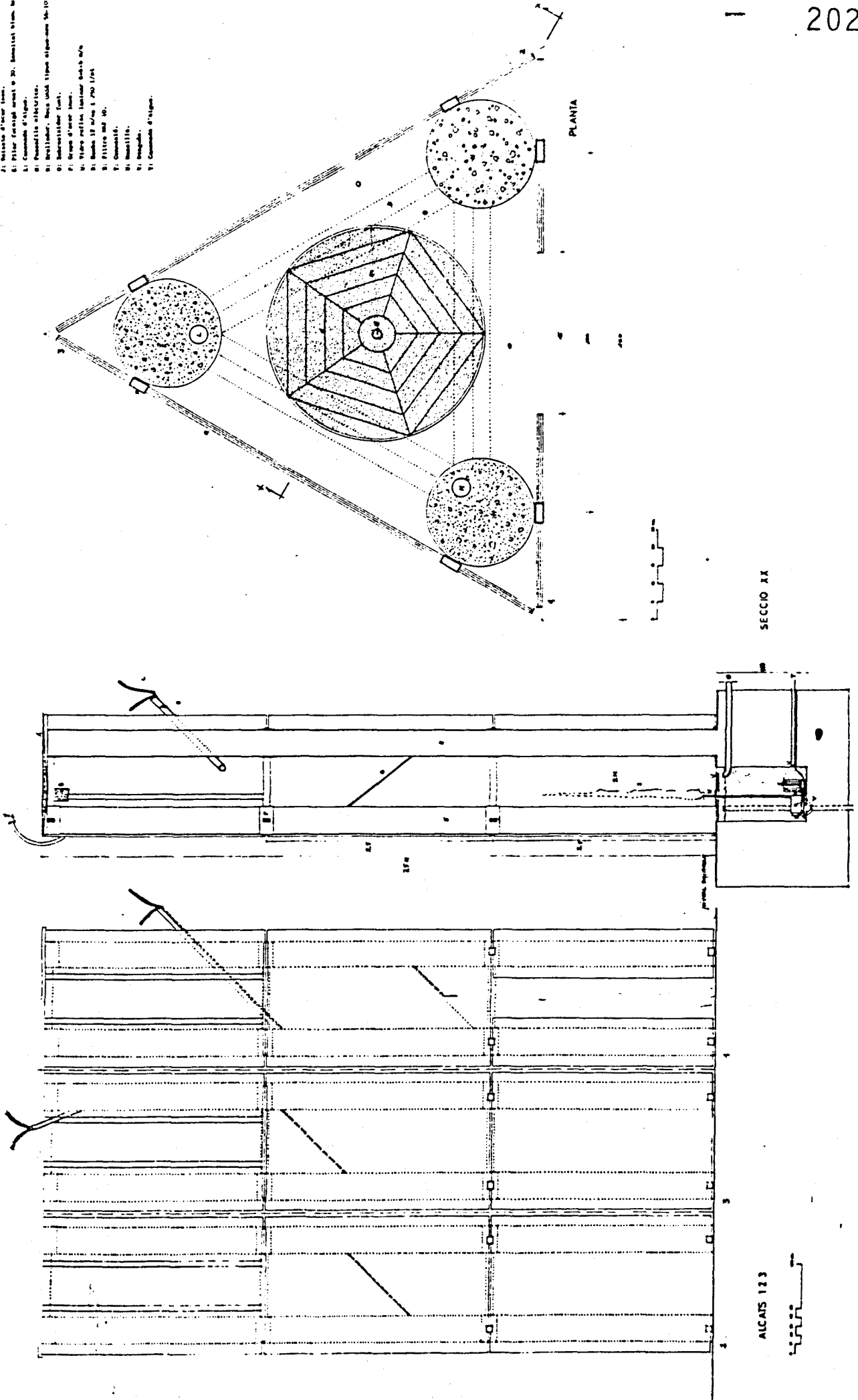




7. PLAÇA DE LES OLLES. GRANOLLERS



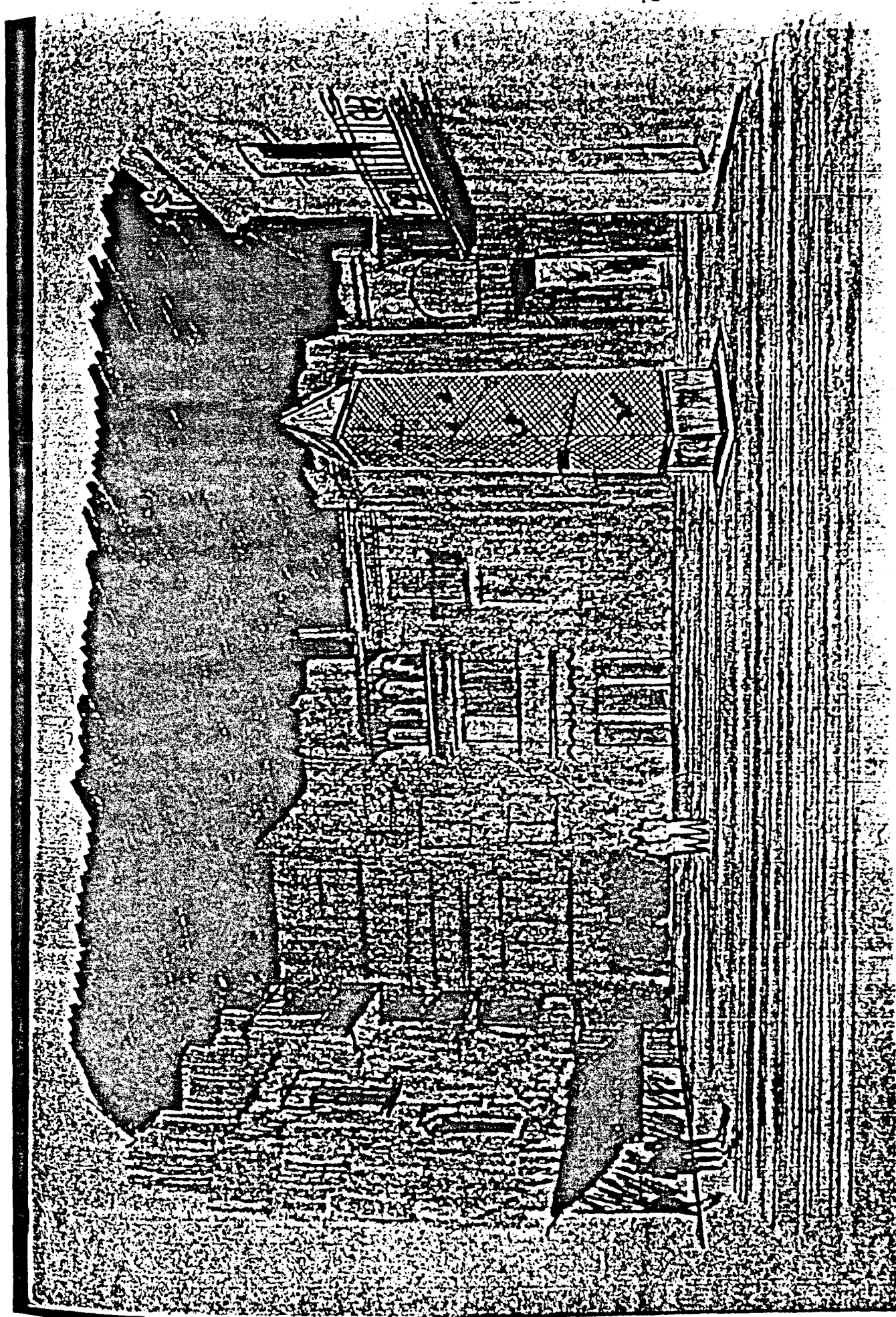
- 1. Ciment d'armement, diamètre 10 mm.
- 2. Béton, 1/3 de ciment, 2/3 de sable de rivière, 1/3 de gravier.
- 3. Plancher en béton.
- 4. Plancher en bois.
- 5. Plancher en bois, revêtement de ciment.
- 6. Plancher en bois, revêtement de ciment, isolation thermique.
- 7. Plancher en bois, revêtement de ciment, isolation thermique, isolation acoustique.
- 8. Plancher en bois, revêtement de ciment, isolation thermique, isolation acoustique, isolation phonique.
- 9. Plancher en bois, revêtement de ciment, isolation thermique, isolation acoustique, isolation phonique, isolation électrique.
- 10. Plancher en bois, revêtement de ciment, isolation thermique, isolation acoustique, isolation phonique, isolation électrique, isolation chimique.
- 11. Plancher en bois, revêtement de ciment, isolation thermique, isolation acoustique, isolation phonique, isolation électrique, isolation chimique, isolation thermique.
- 12. Plancher en bois, revêtement de ciment, isolation thermique, isolation acoustique, isolation phonique, isolation électrique, isolation chimique, isolation thermique, isolation acoustique.
- 13. Plancher en bois, revêtement de ciment, isolation thermique, isolation acoustique, isolation phonique, isolation électrique, isolation chimique, isolation thermique, isolation acoustique, isolation phonique.
- 14. Plancher en bois, revêtement de ciment, isolation thermique, isolation acoustique, isolation phonique, isolation électrique, isolation chimique, isolation thermique, isolation acoustique, isolation phonique, isolation électrique.
- 15. Plancher en bois, revêtement de ciment, isolation thermique, isolation acoustique, isolation phonique, isolation électrique, isolation chimique, isolation thermique, isolation acoustique, isolation phonique, isolation électrique, isolation chimique.
- 16. Plancher en bois, revêtement de ciment, isolation thermique, isolation acoustique, isolation phonique, isolation électrique, isolation chimique, isolation thermique, isolation acoustique, isolation phonique, isolation électrique, isolation chimique, isolation thermique.
- 17. Plancher en bois, revêtement de ciment, isolation thermique, isolation acoustique, isolation phonique, isolation électrique, isolation chimique, isolation thermique, isolation acoustique, isolation phonique, isolation électrique, isolation chimique, isolation thermique, isolation acoustique.
- 18. Plancher en bois, revêtement de ciment, isolation thermique, isolation acoustique, isolation phonique, isolation électrique, isolation chimique, isolation thermique, isolation acoustique, isolation phonique, isolation électrique, isolation chimique, isolation thermique, isolation acoustique, isolation phonique.
- 19. Plancher en bois, revêtement de ciment, isolation thermique, isolation acoustique, isolation phonique, isolation électrique, isolation chimique, isolation thermique, isolation acoustique, isolation phonique, isolation électrique, isolation chimique, isolation thermique, isolation acoustique, isolation phonique, isolation électrique.
- 20. Plancher en bois, revêtement de ciment, isolation thermique, isolation acoustique, isolation phonique, isolation électrique, isolation chimique, isolation thermique, isolation acoustique, isolation phonique, isolation électrique, isolation chimique, isolation thermique, isolation acoustique, isolation phonique, isolation électrique, isolation chimique.



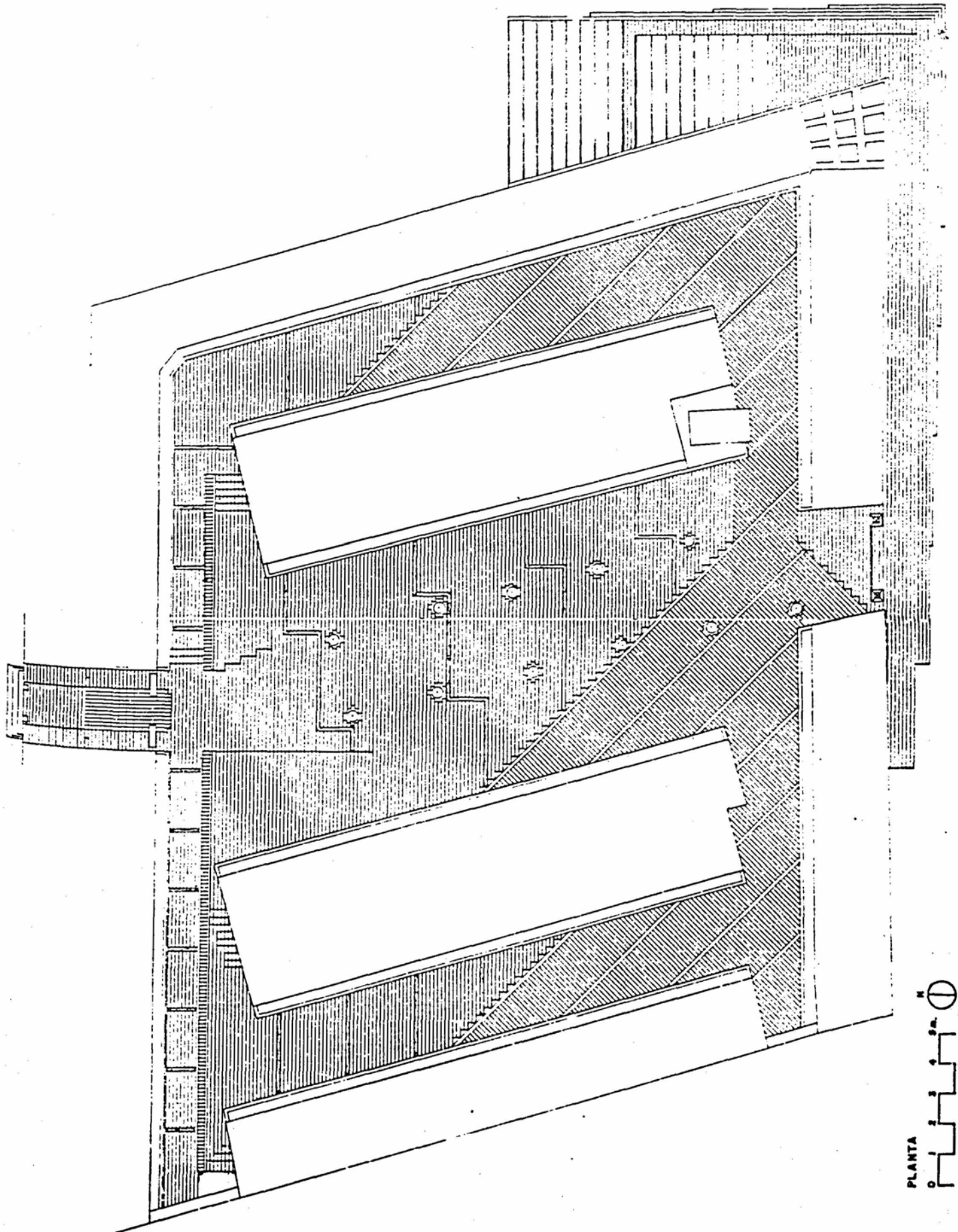
PLANTA

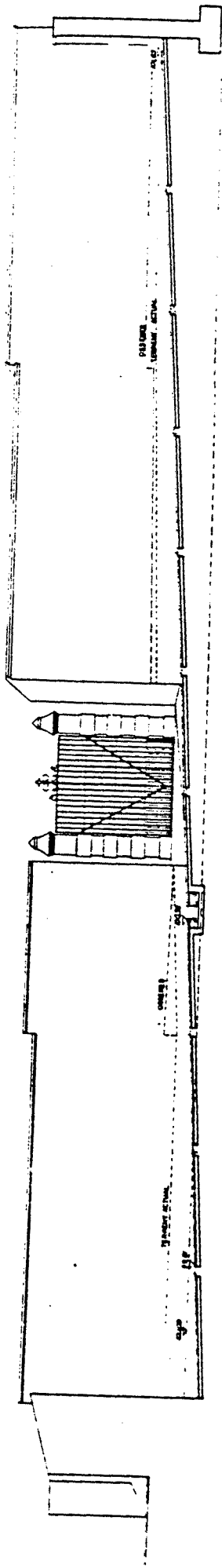
SECCIO II

ALCAT 123

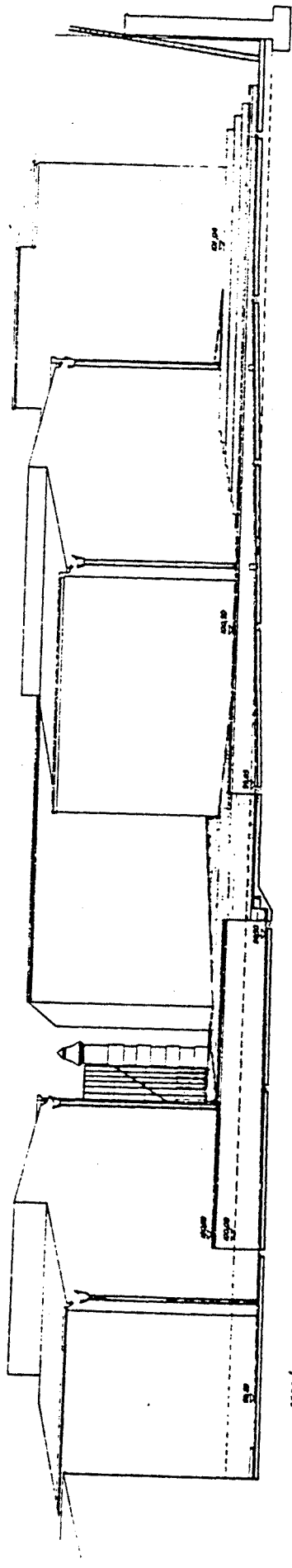


8. REFORMA CEMENTIRI VELL. PARETS DEL VALLÈS

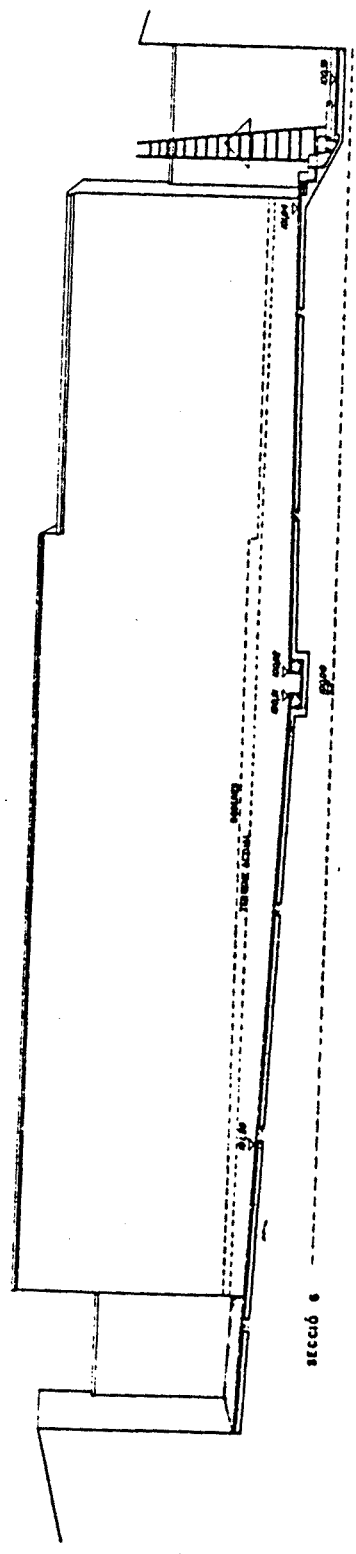




SECCIO 7

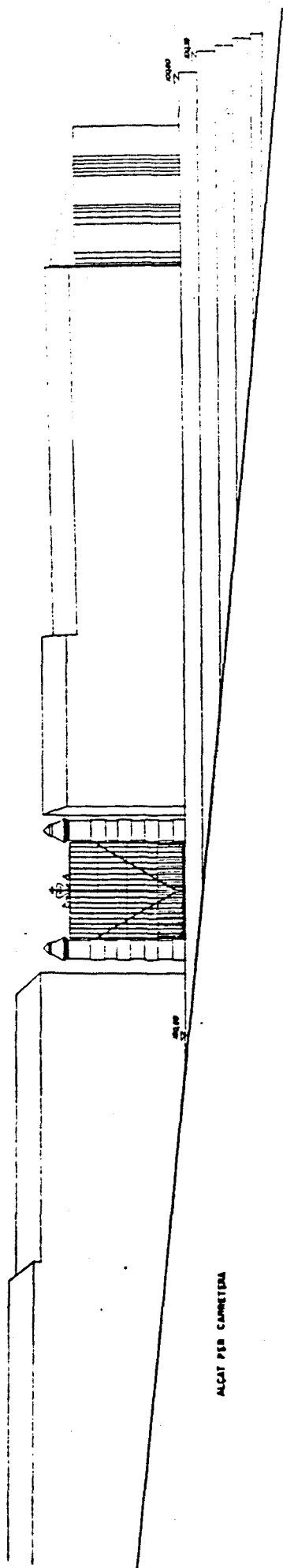


SECCIO 8

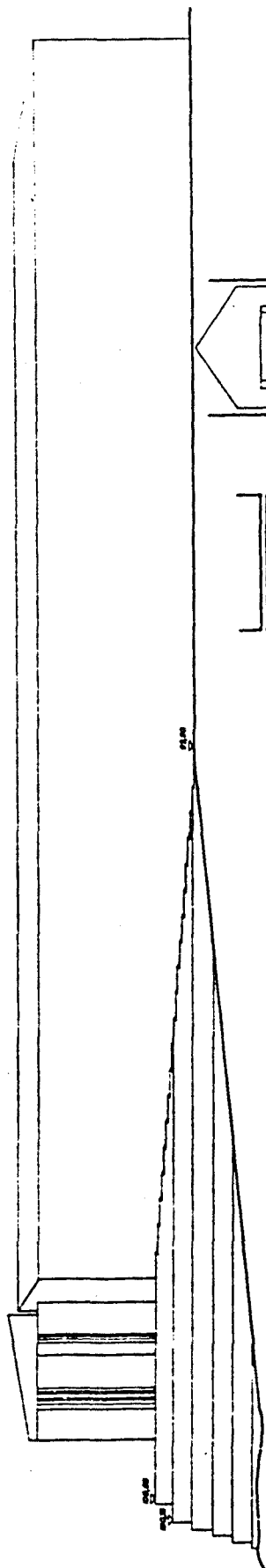


SECCIO 9

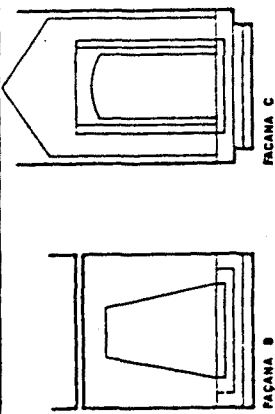




ALÇAT PER CARRERADA

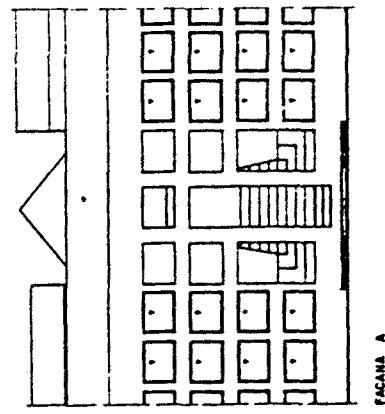


ALÇAT PER CARRERADA

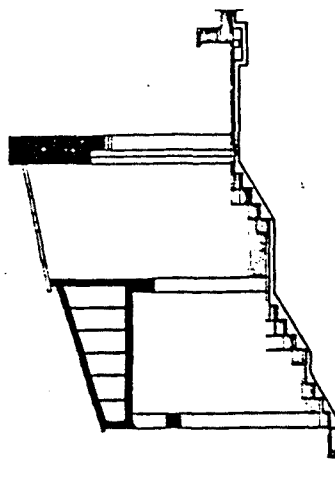


FACANA C

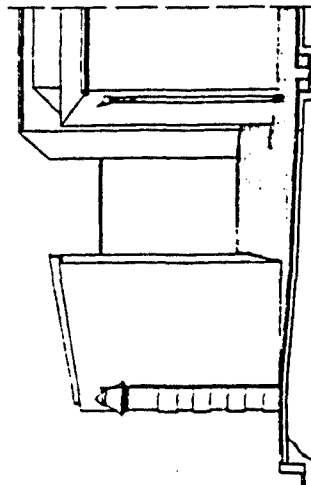
FACANA B



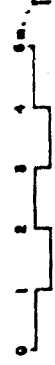
FACANA A

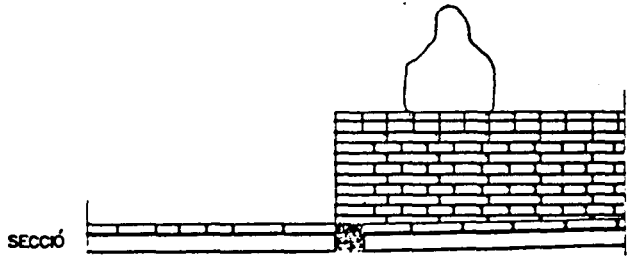
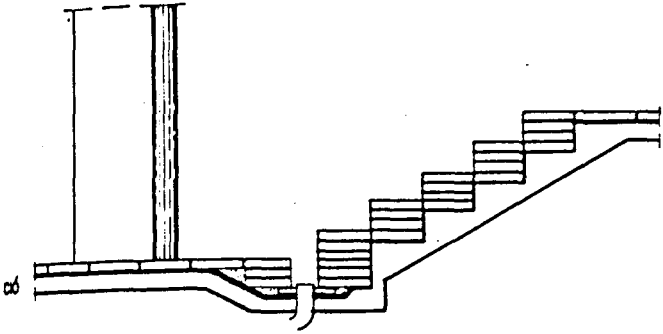


SECCÓ 11

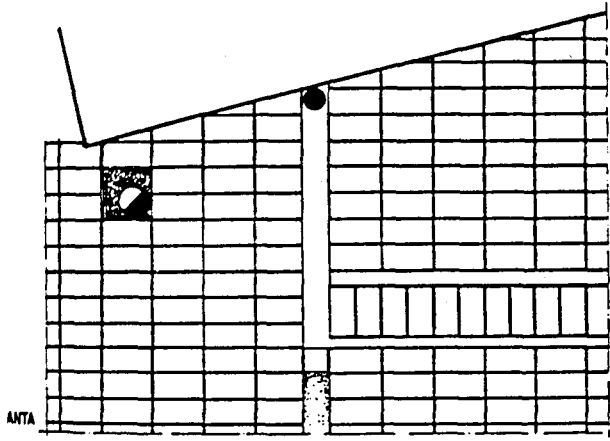


SECCÓ 10



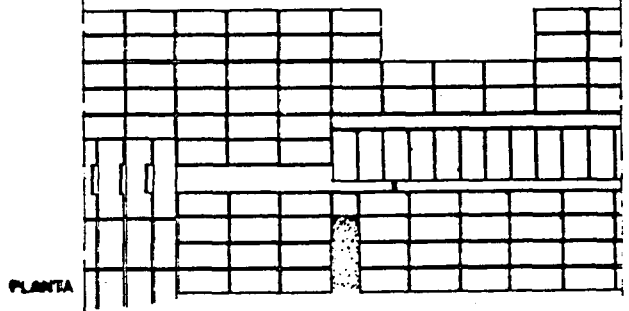


SECCIÓ

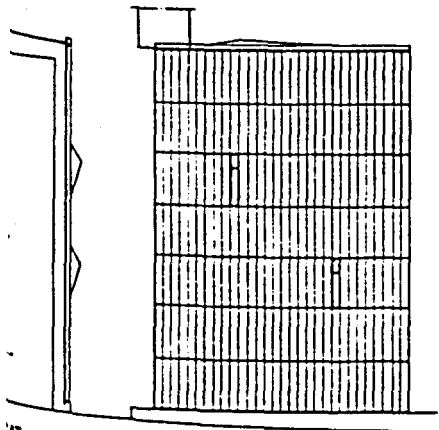


ANTA

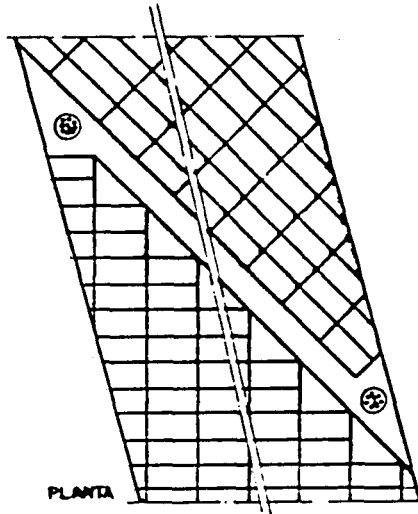
DETALL



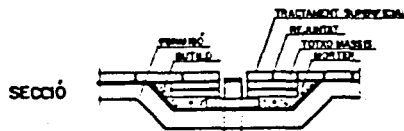
PLANTA



ANTA

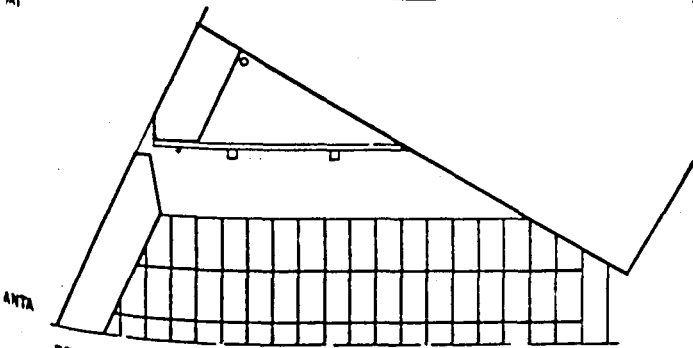


PLANTA



SECCIÓ

DETALL



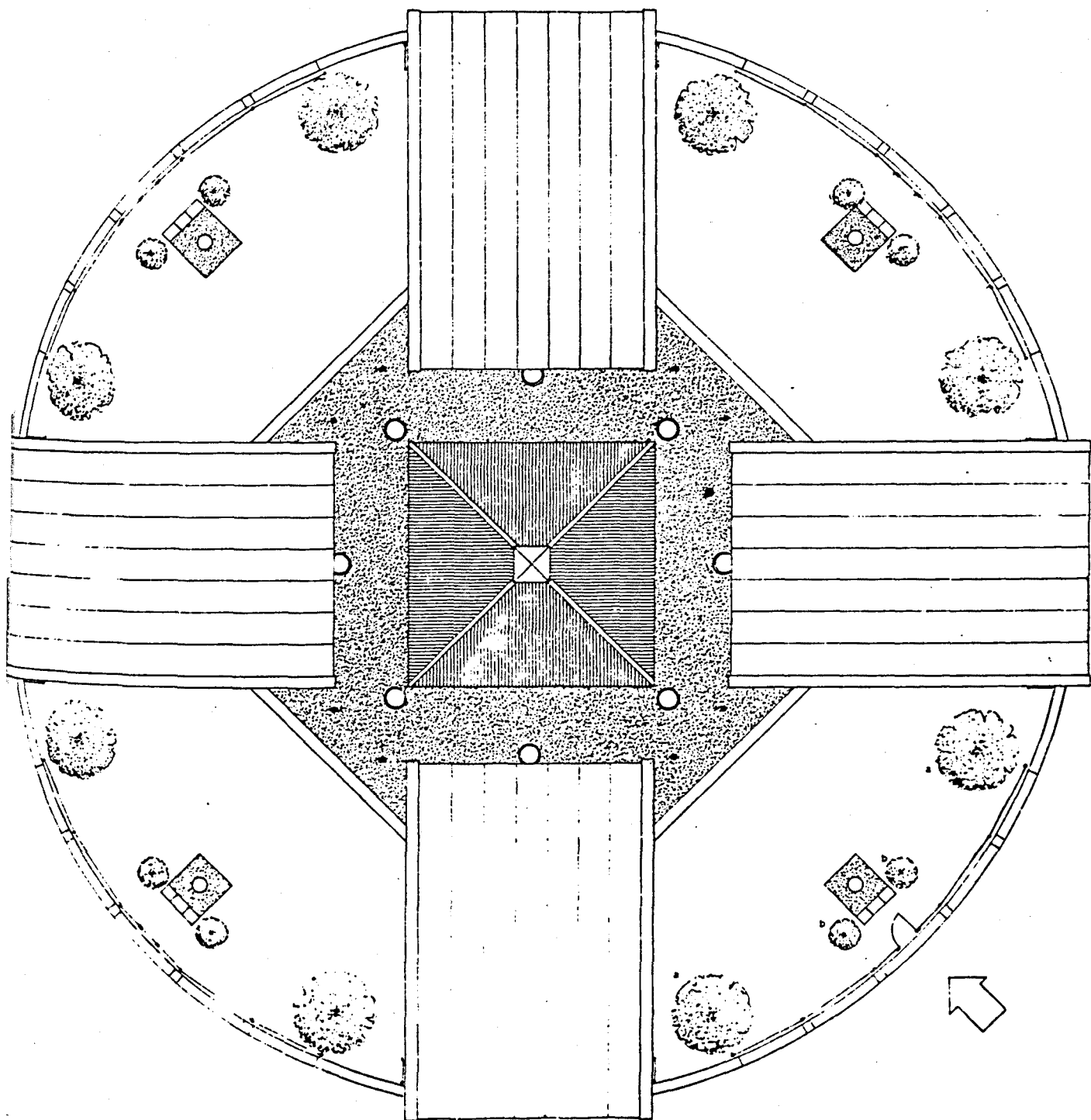
ANTA

DETALL



ALÇAT
DETALL

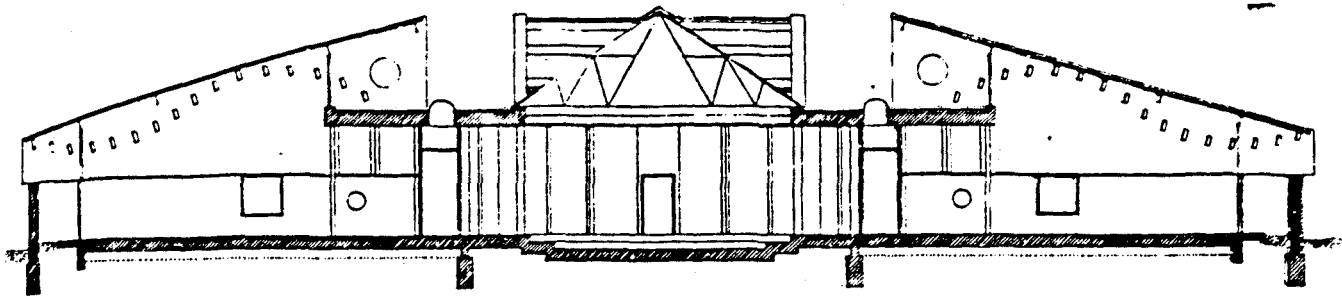
9. TIPOLOGIA PARVULARI



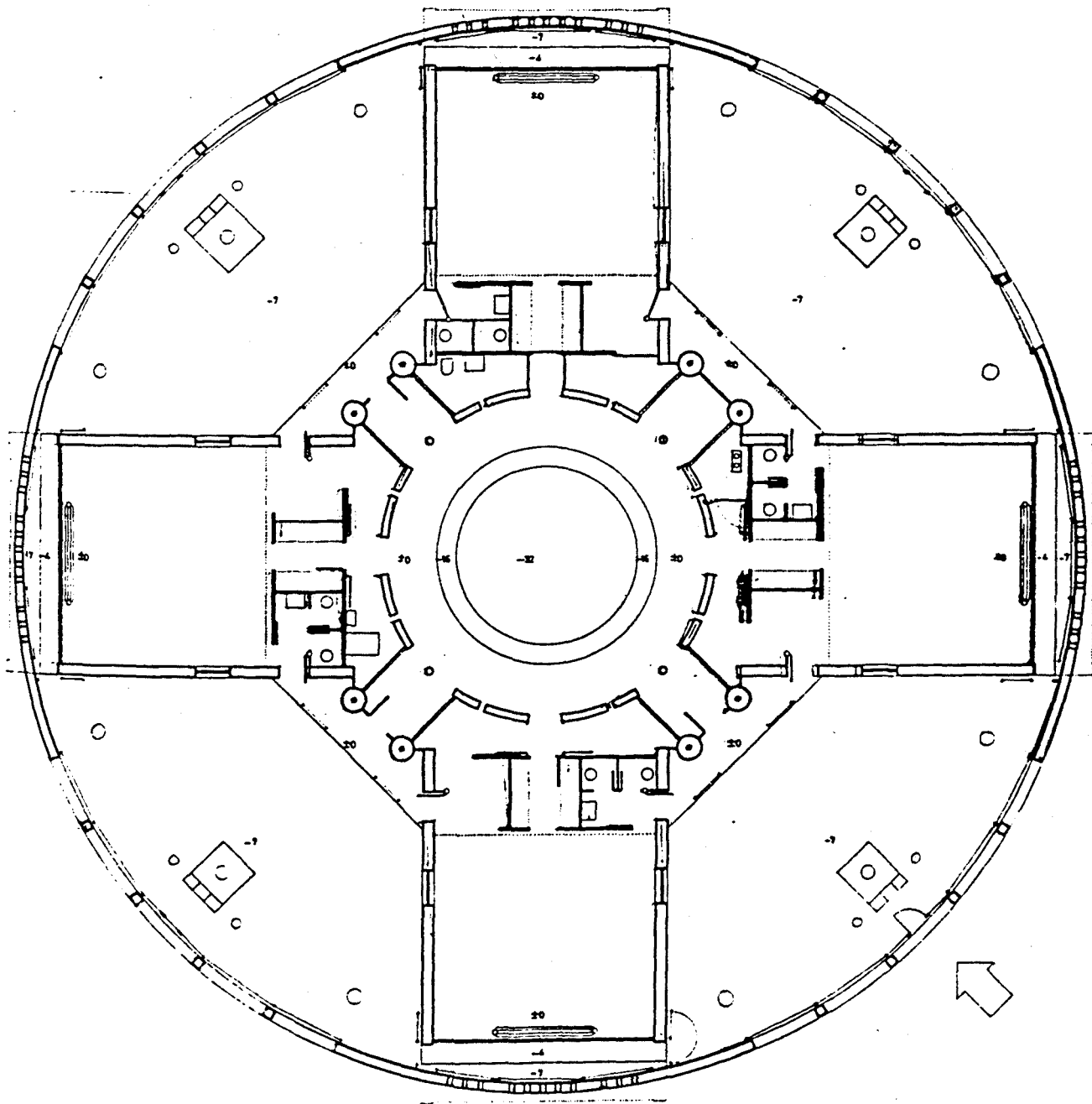
PLANTA COBERTA



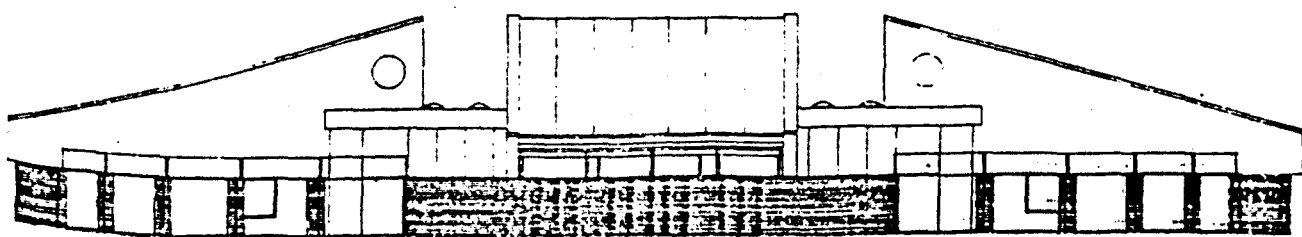
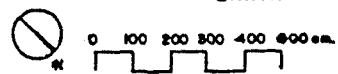
0 50 100 200 300 400 500 cm



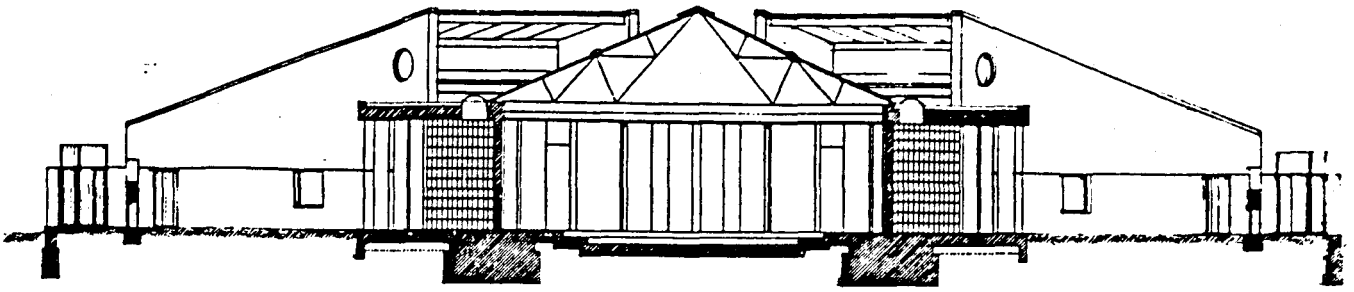
SECCIÓ



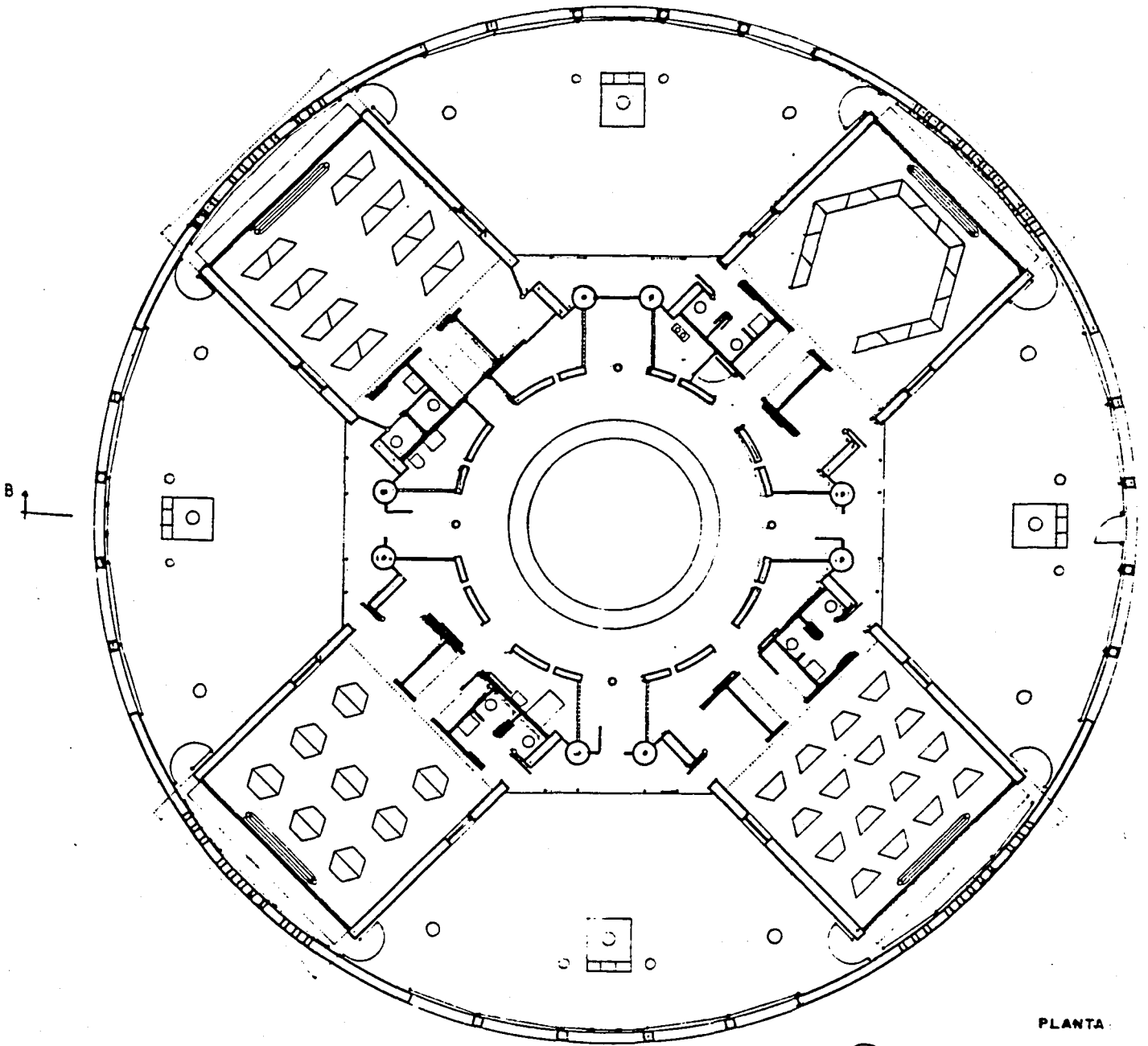
PLANTA



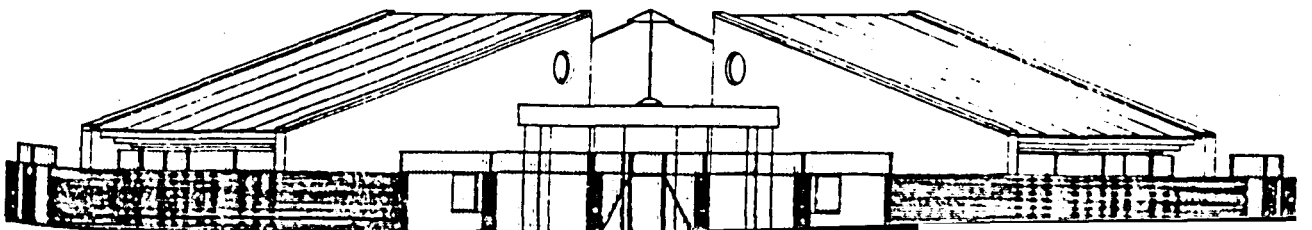
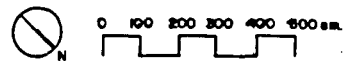
ALÇAT

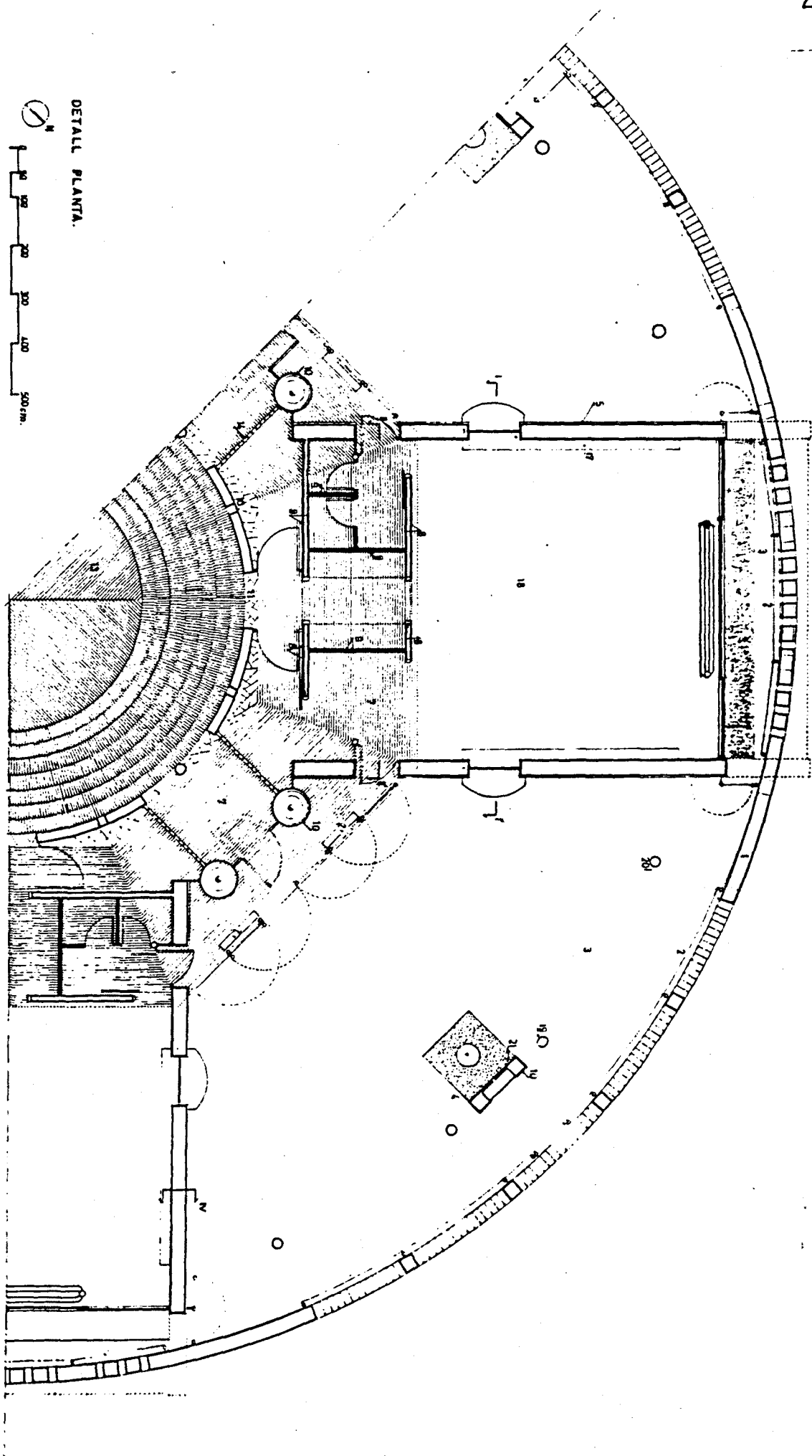


SECCIÓ



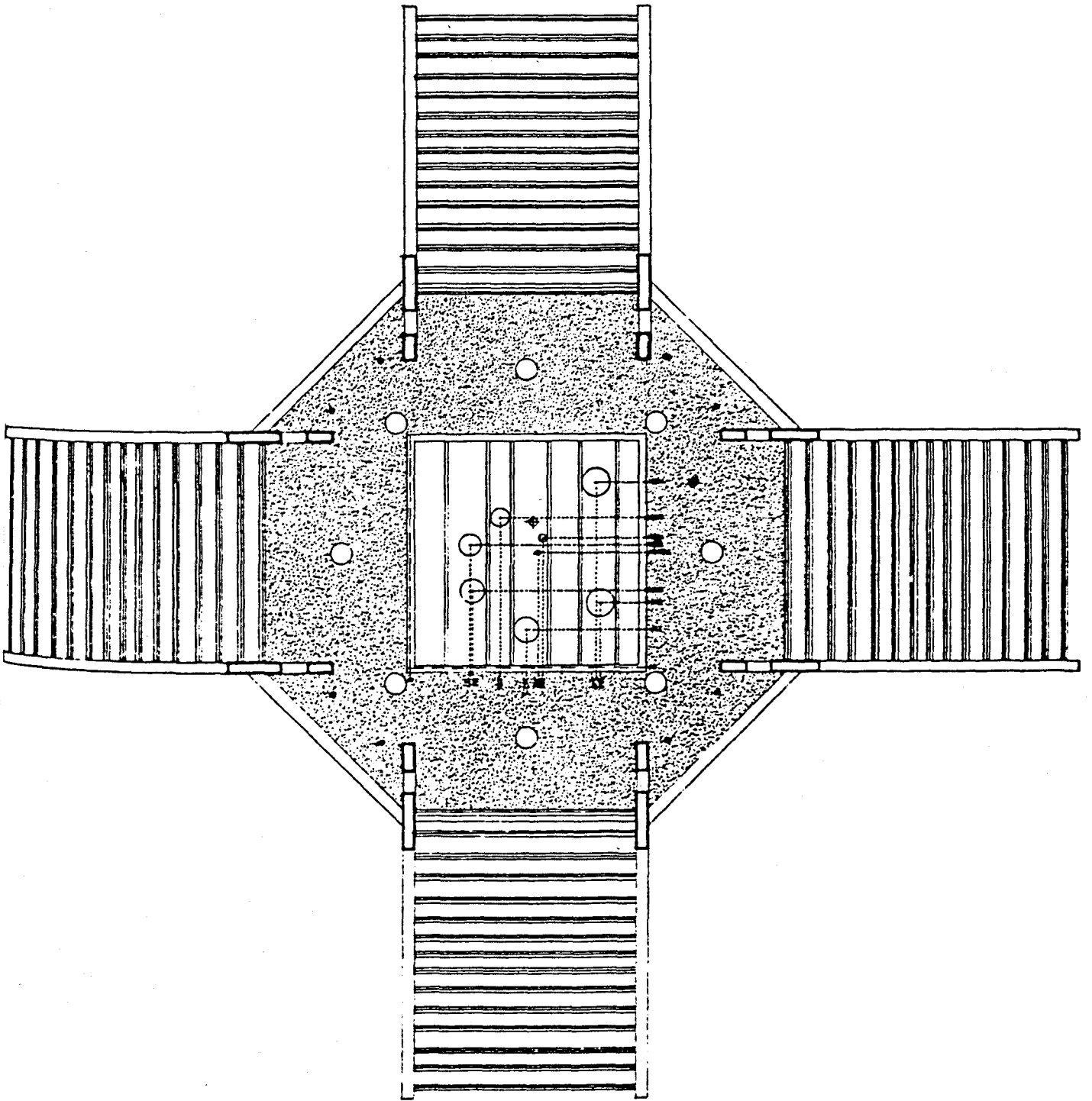
PLANTA





DETAILED PLANTA.



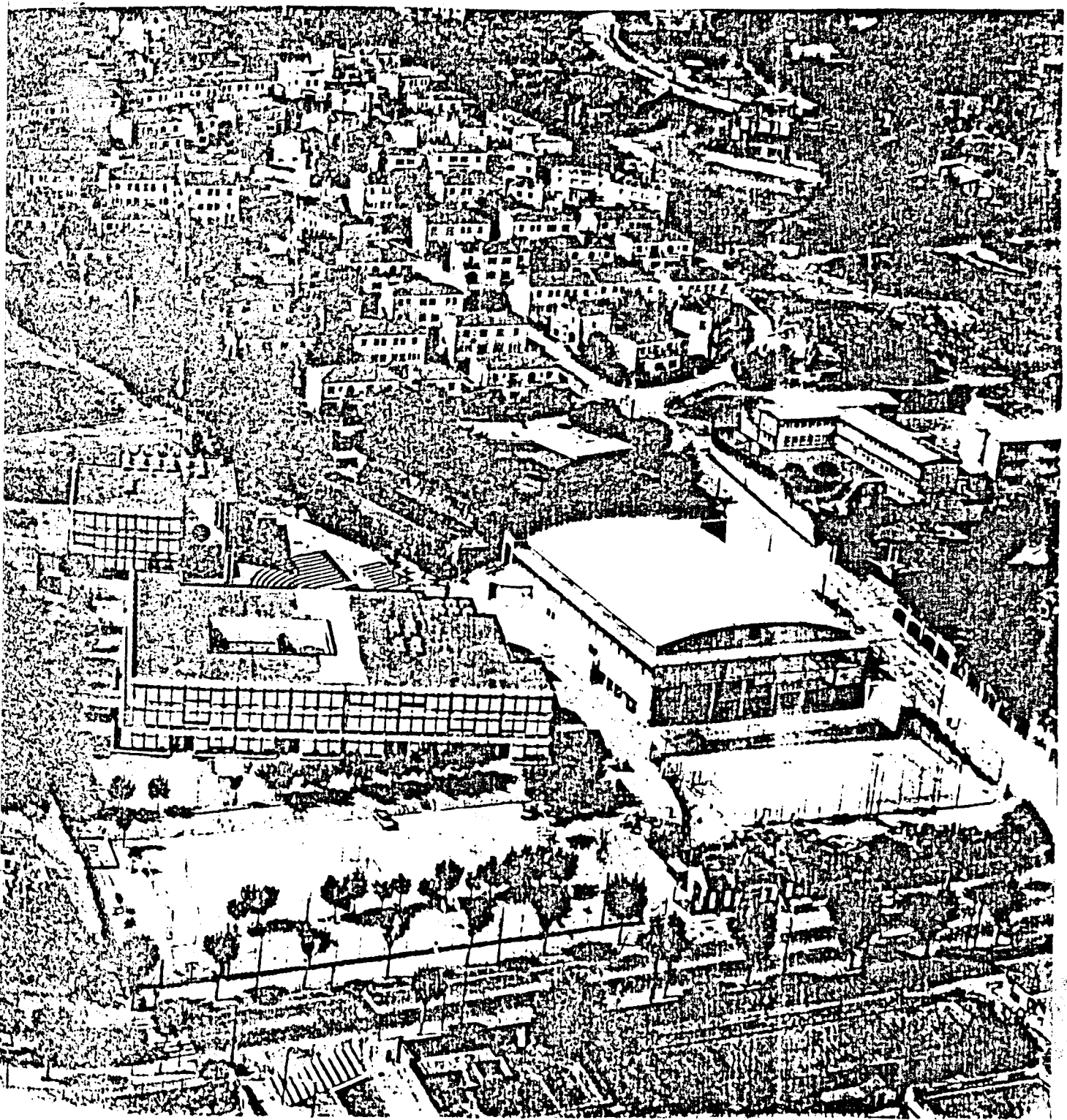


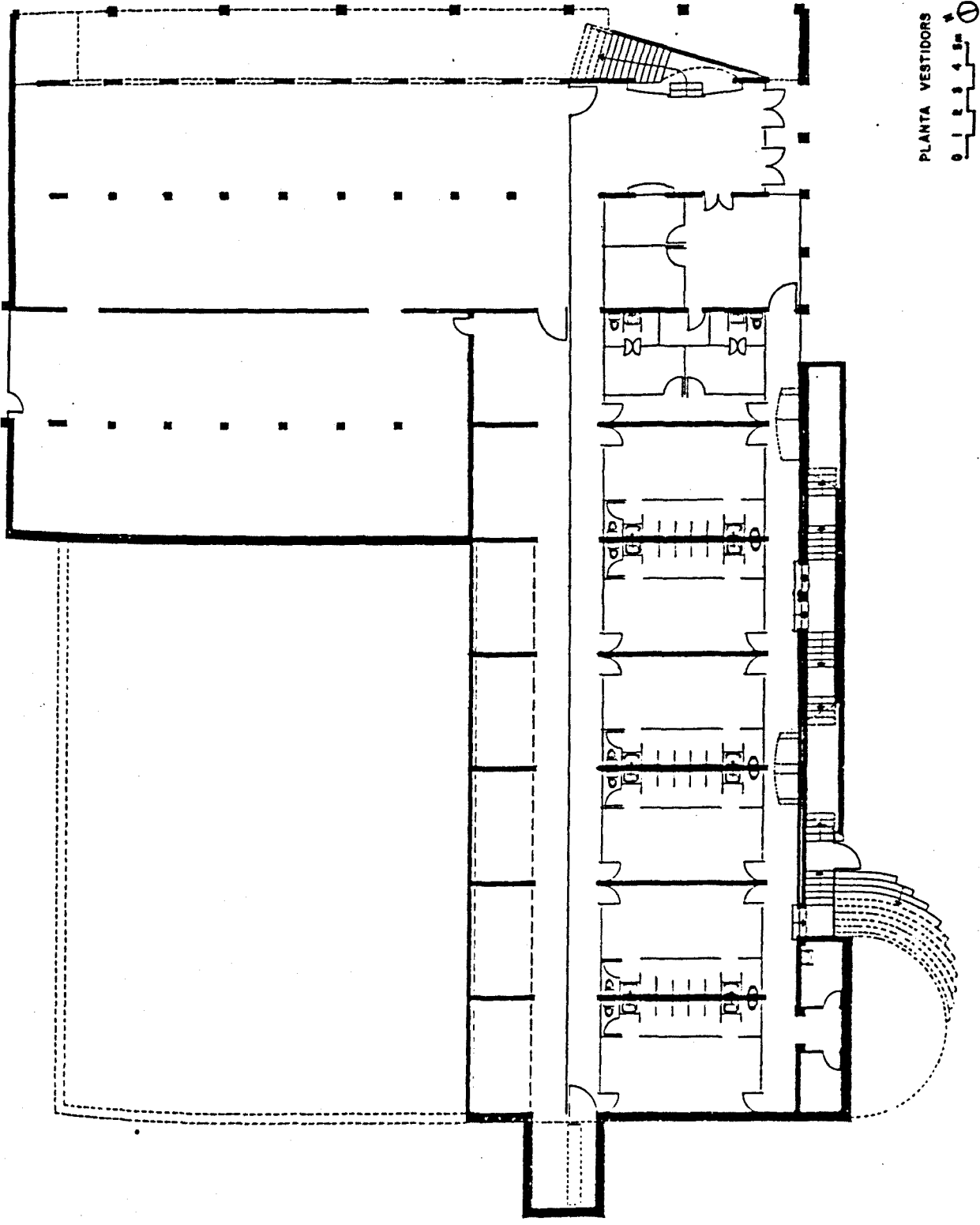
PLANTA CEL



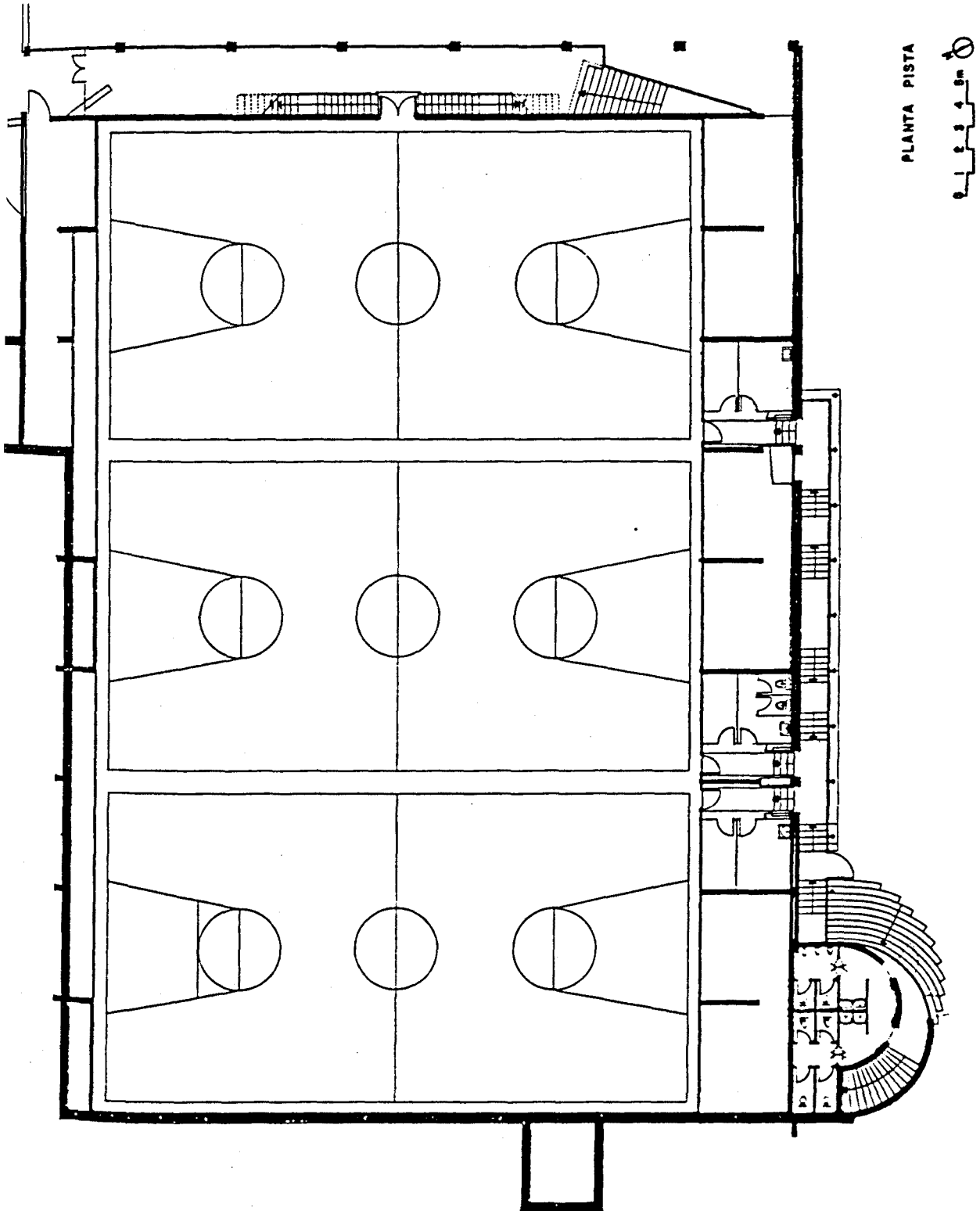
0 50 100 200 300 400 500 cm.

10. POLISPORTIU PER A L'ESCOLA THAU. BARCELONA



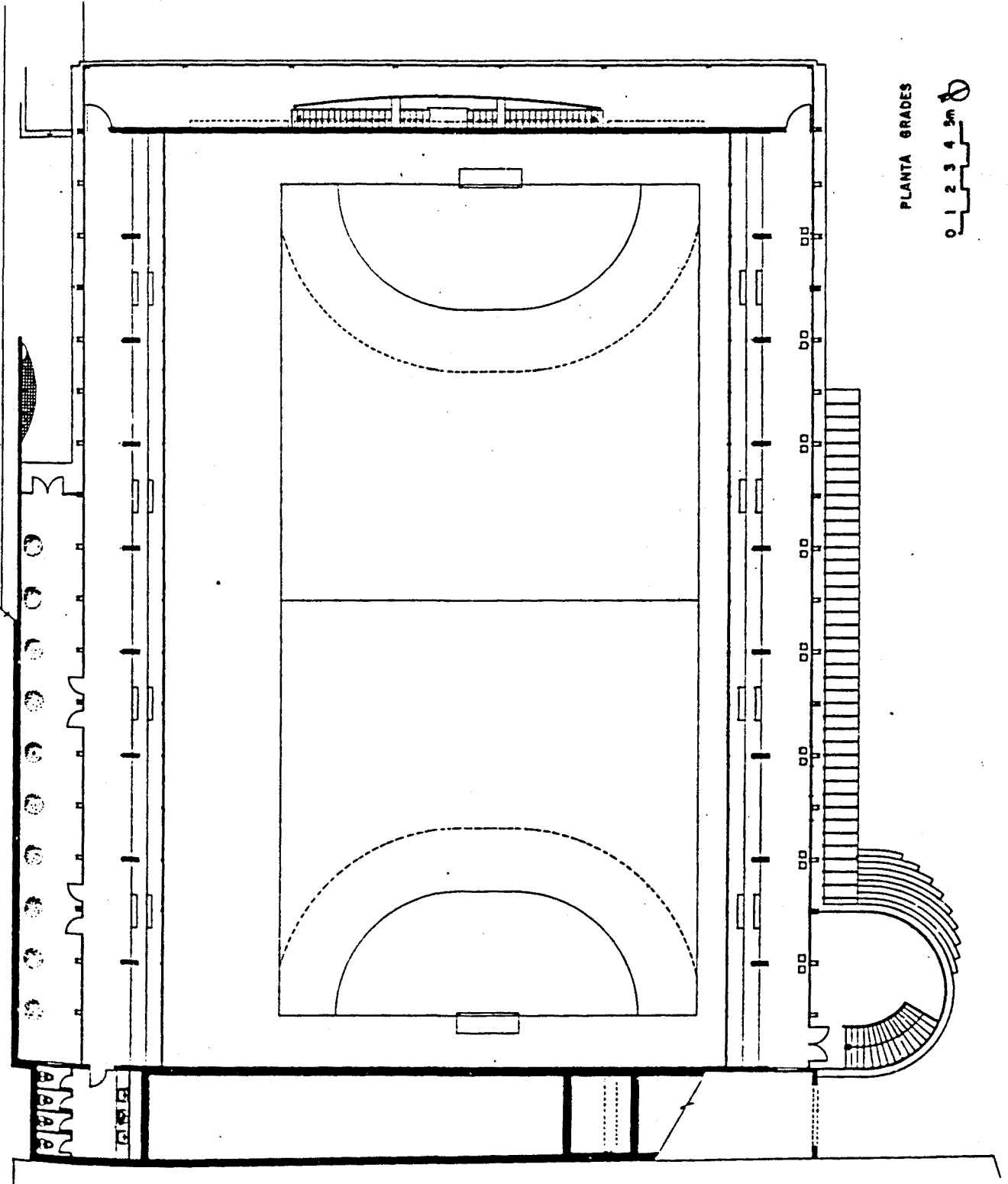


PLANTA VESTIDORS
0 1 2 3 4 5m



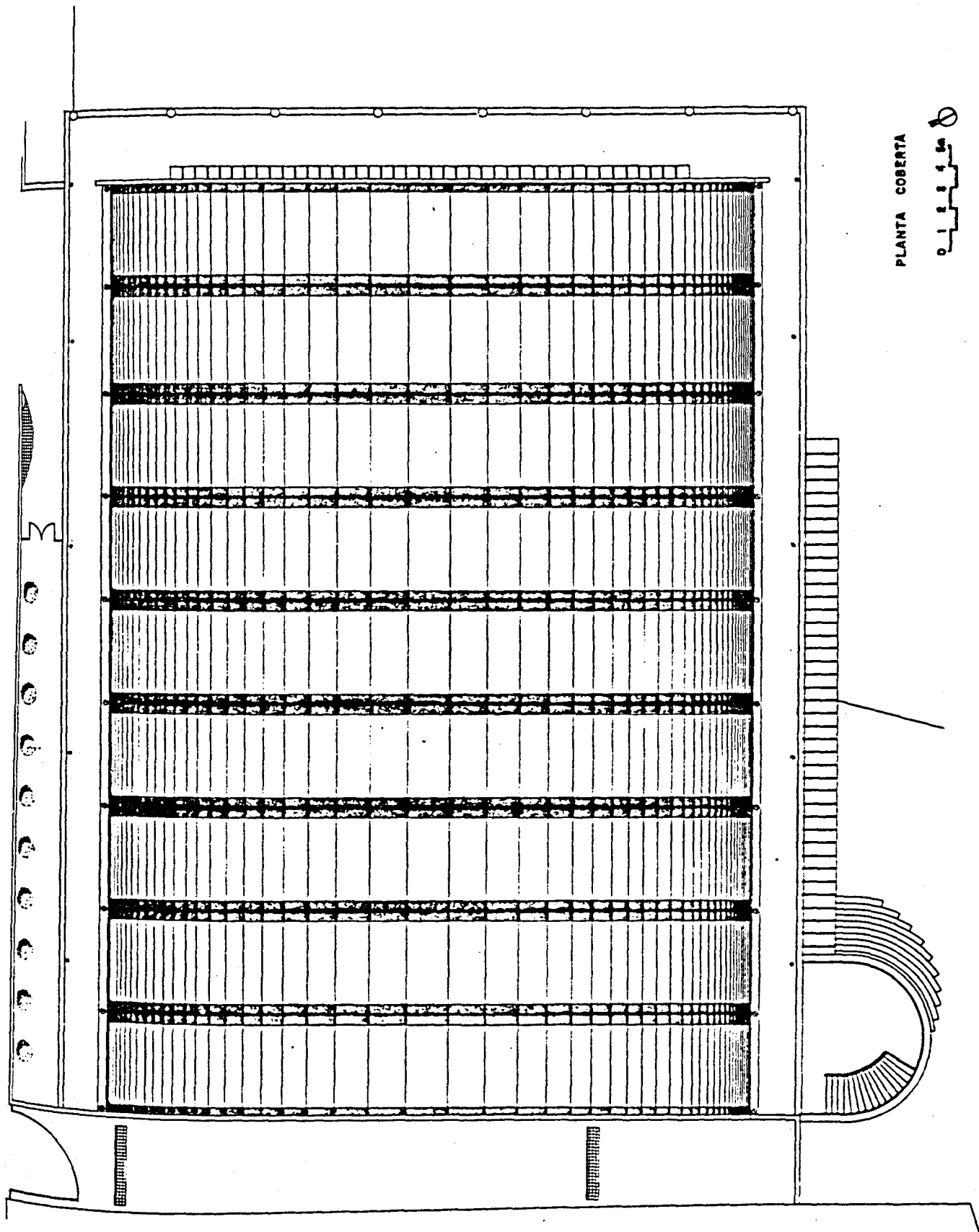
PLANTA PISTA





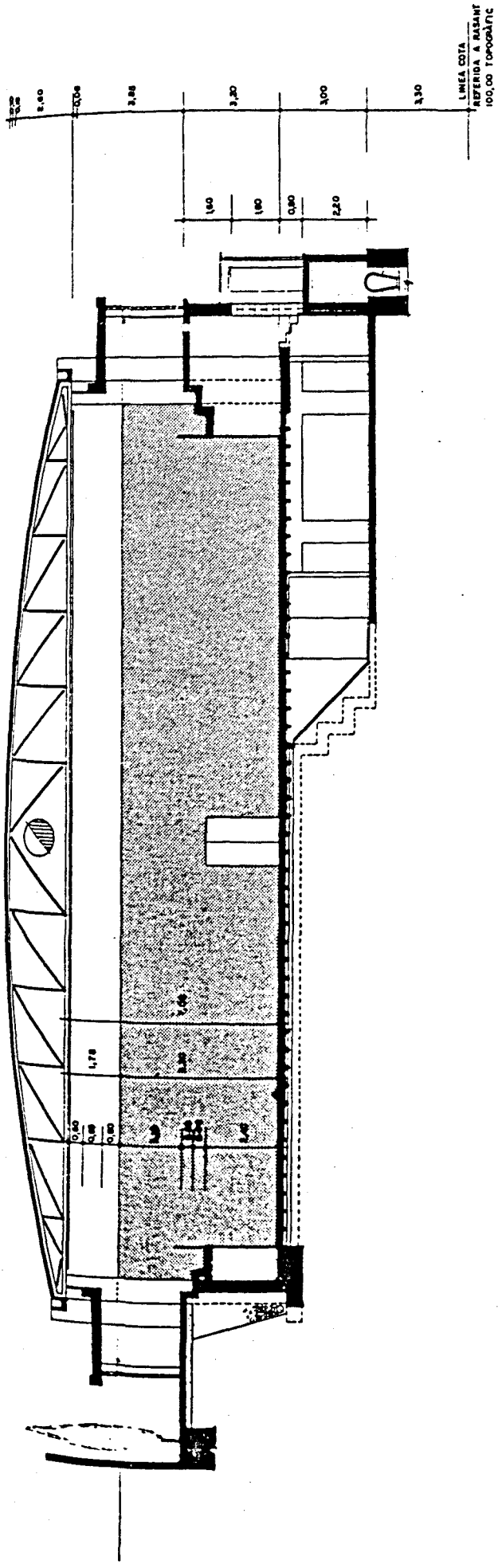
PLANTA GRADES



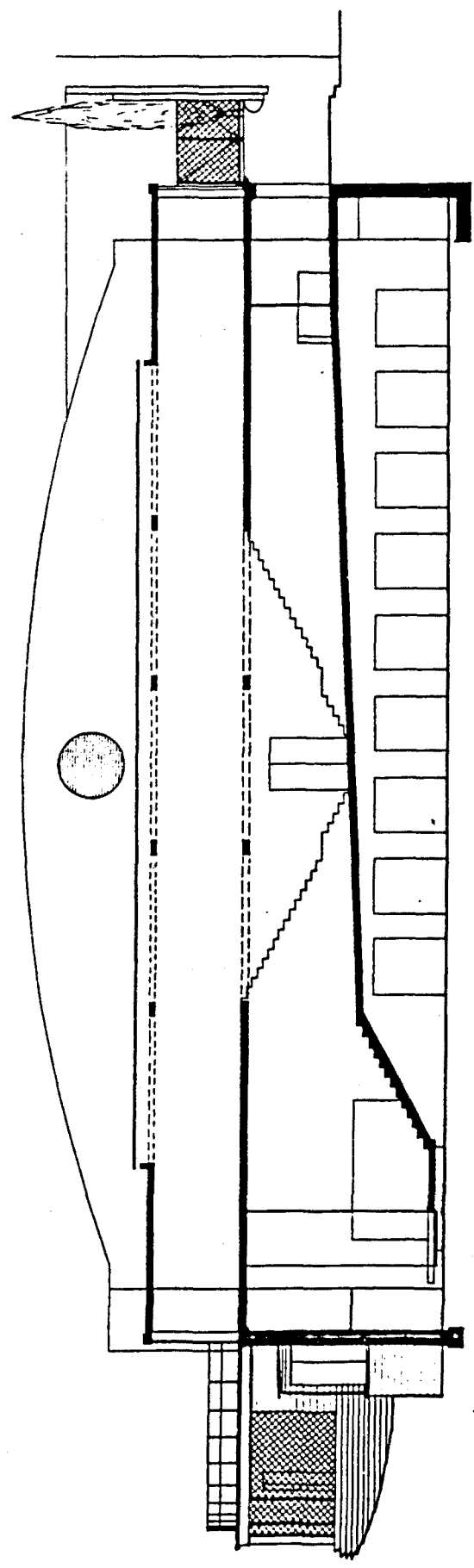


PLANTA COBERTA

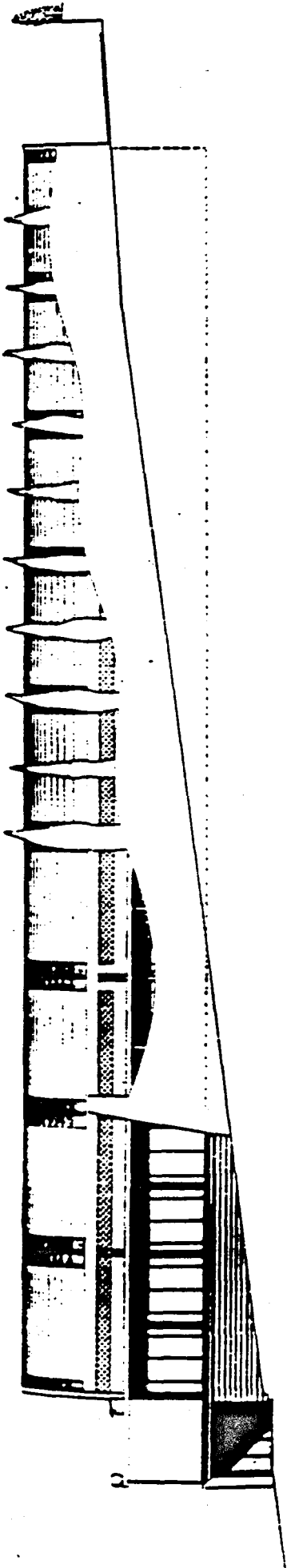




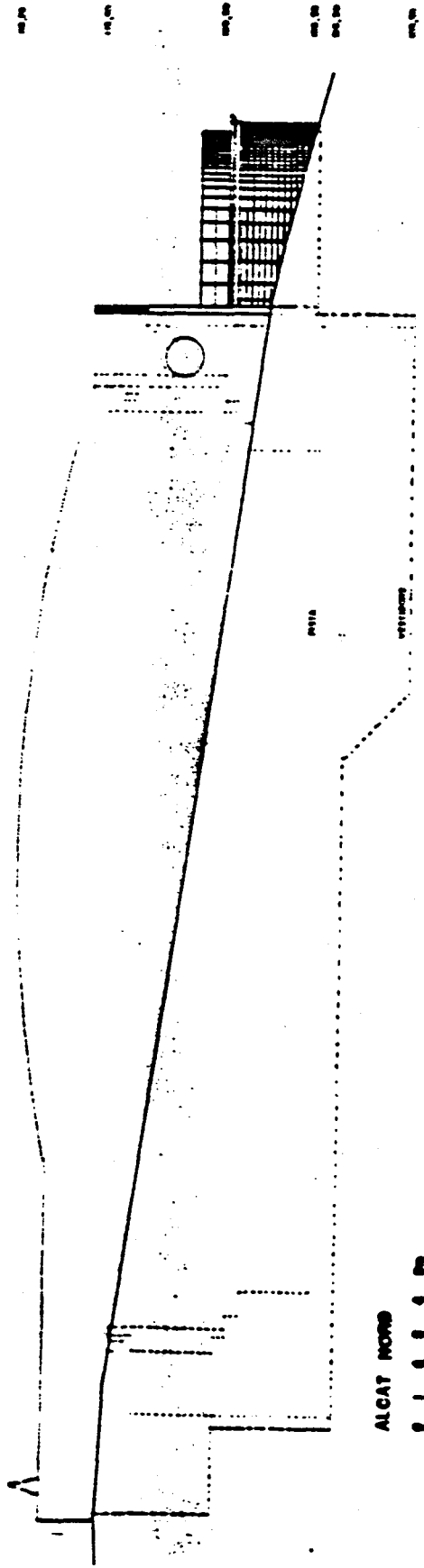
LÍNEA COTA
REFERIDA A RASANT
100,00 TOPOGRÁFIC



SECCIONS TRANSVERSALS
0 1 2 3 4 5 m.



ALCATRAZ BIRD HOUSE



ALCATRAZ BIRD HOUSE