

IMPARTIR ÉS COMPARTIR

Anàlisi i conclusions dels set cursos d'introducció a l'Arquitectura i al Projecte, realitzats a l'ETSAV.

T E S I D O C T O R A L

TUTOR:

ALBERT VIAPLANA

AUTOR:

PERE RIERA PAÑELLAS

Gener 1987

He preferit explicar-les totes de cop.

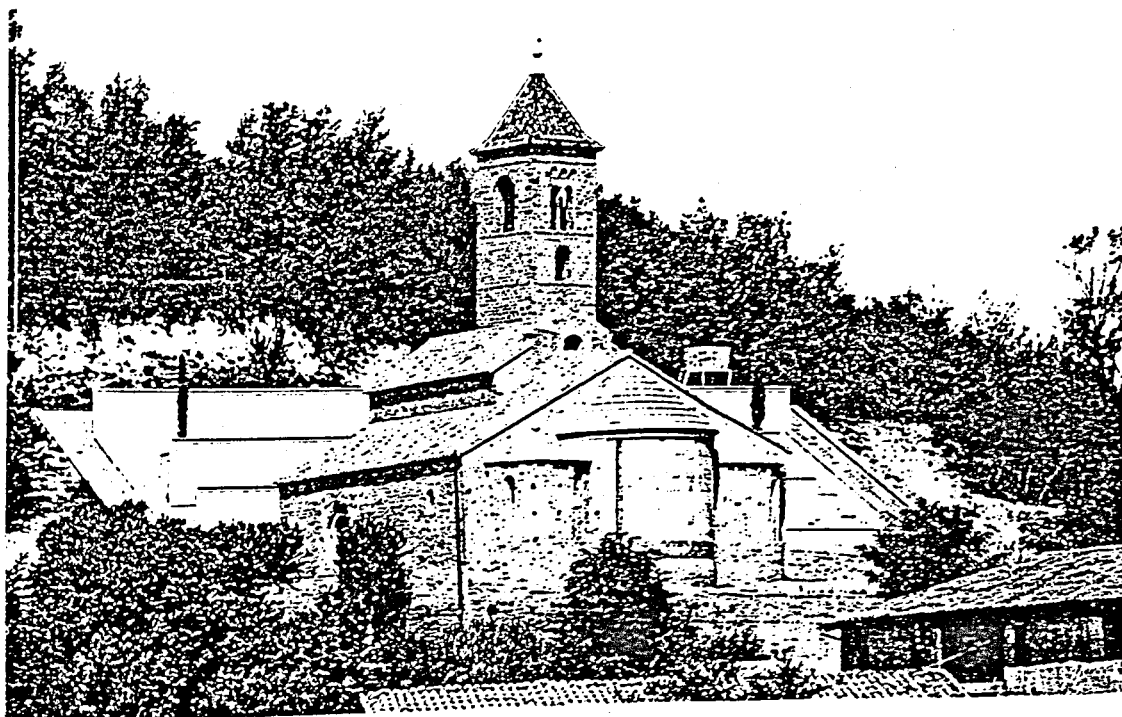
O més ben dit, no explicar res.

He preferit explicar el vent que les empeny
i deixar l'espectacle mut de mil veles desplegadas,
jugant a guerres invisibles al calaix de l'armari
de la Memoria.

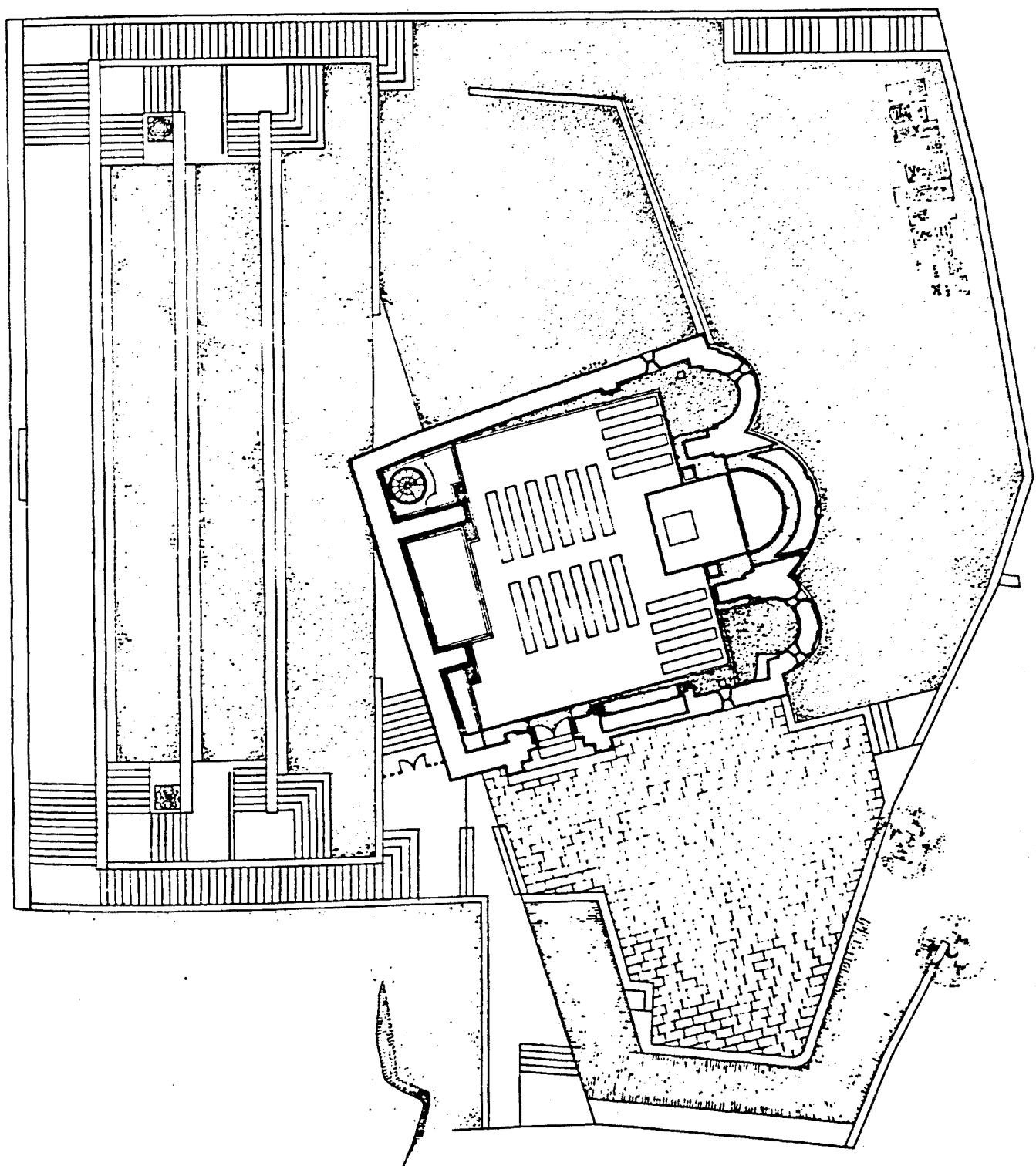
Cada bola de billar, si encerta, empeny la següent
en una nova direcció.

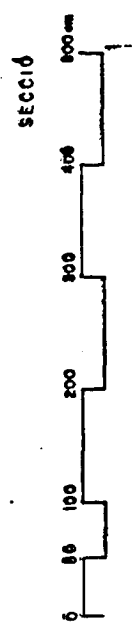
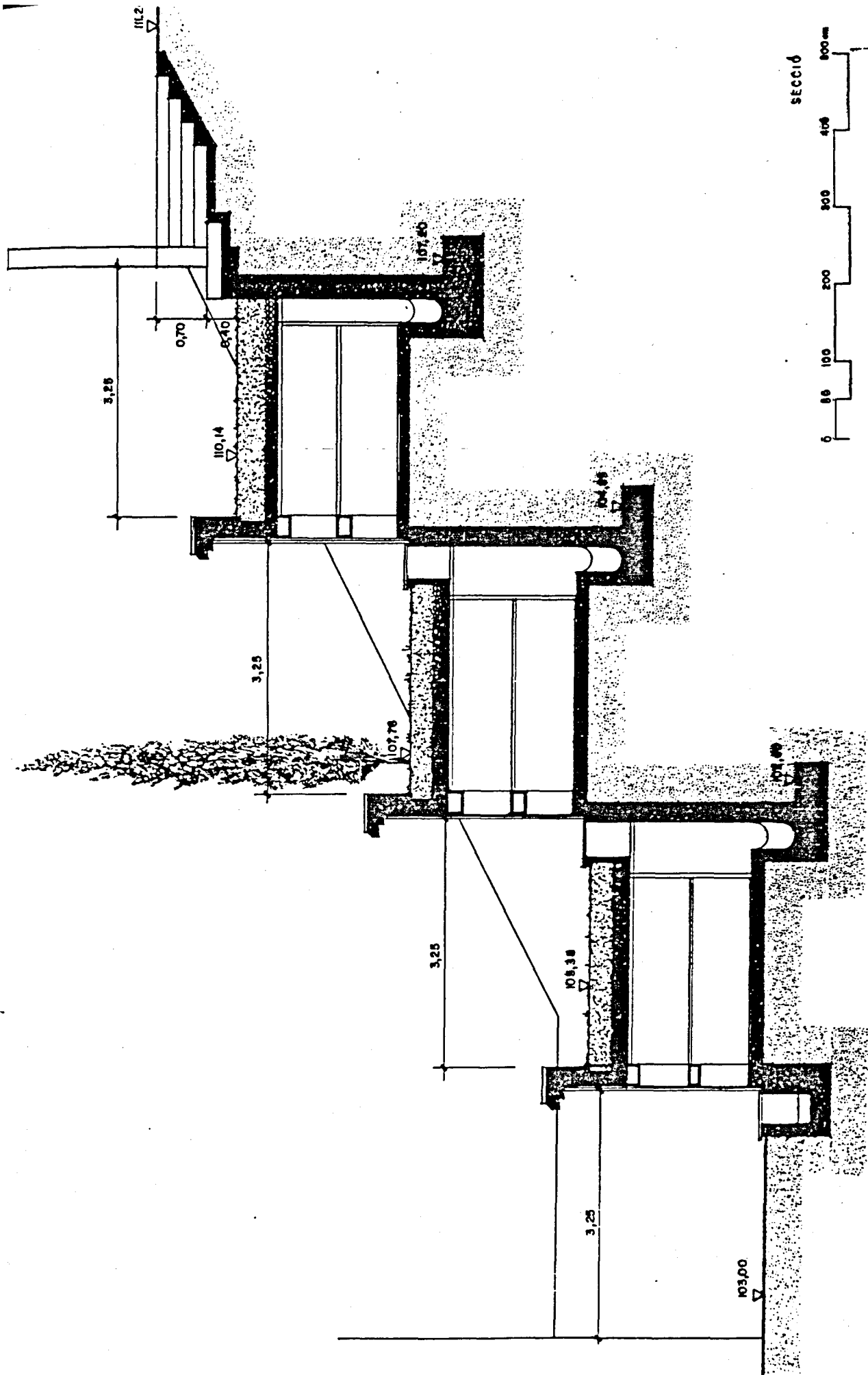
Així, he partit ja a la recerca d'altres mestrals, po-
nents i tramuntanes, i no puc girar la vista enrera:
una estàtua de sal m'espera.

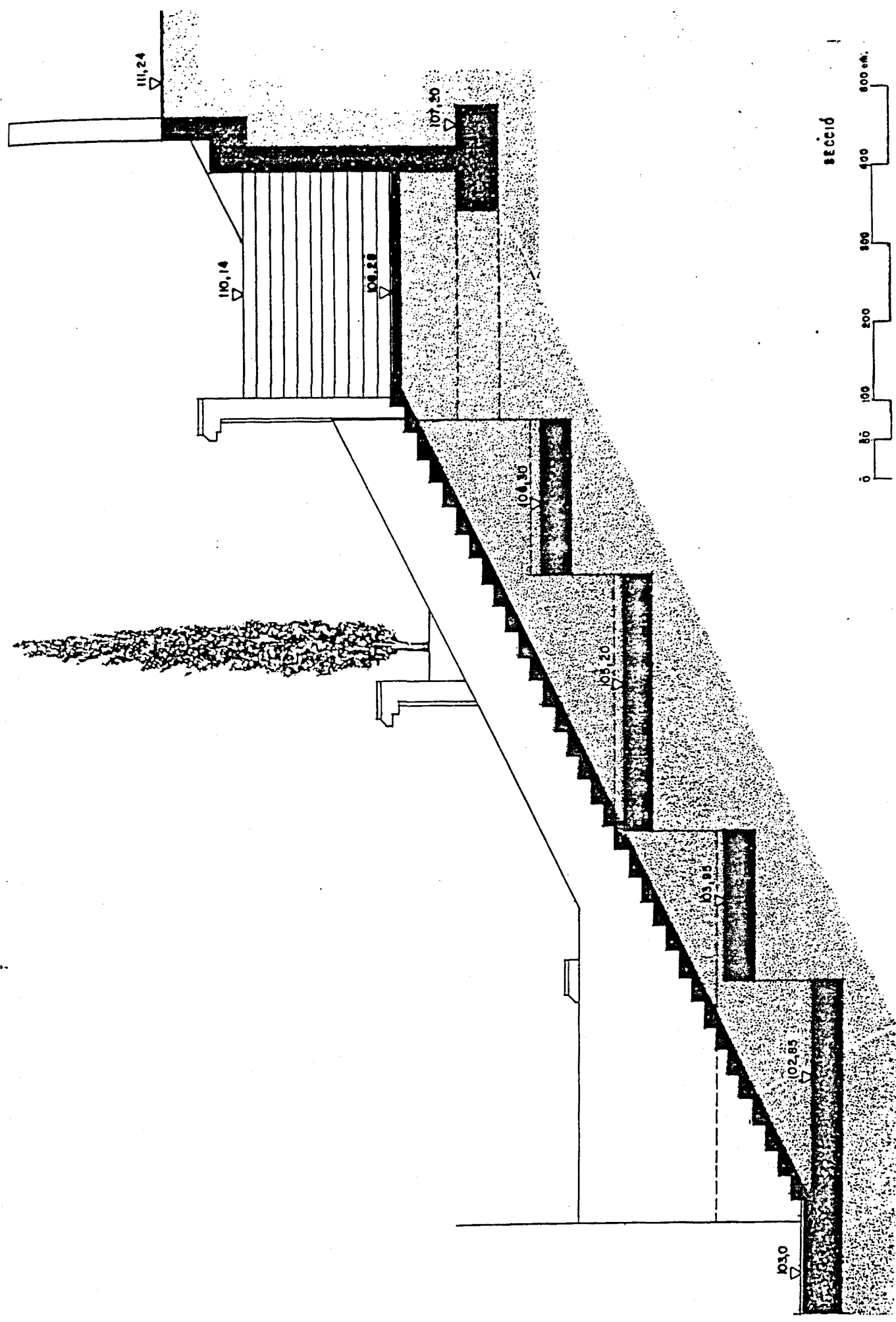
1. CEMENTIRI MUNICIPAL. MALLA. OSONA



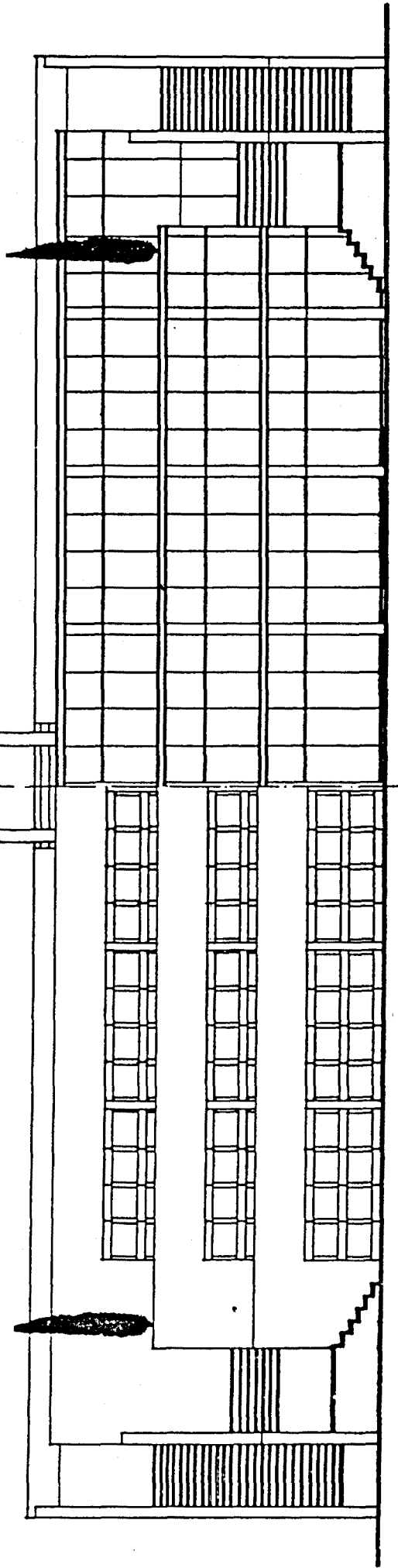
PLANTA GENERAL





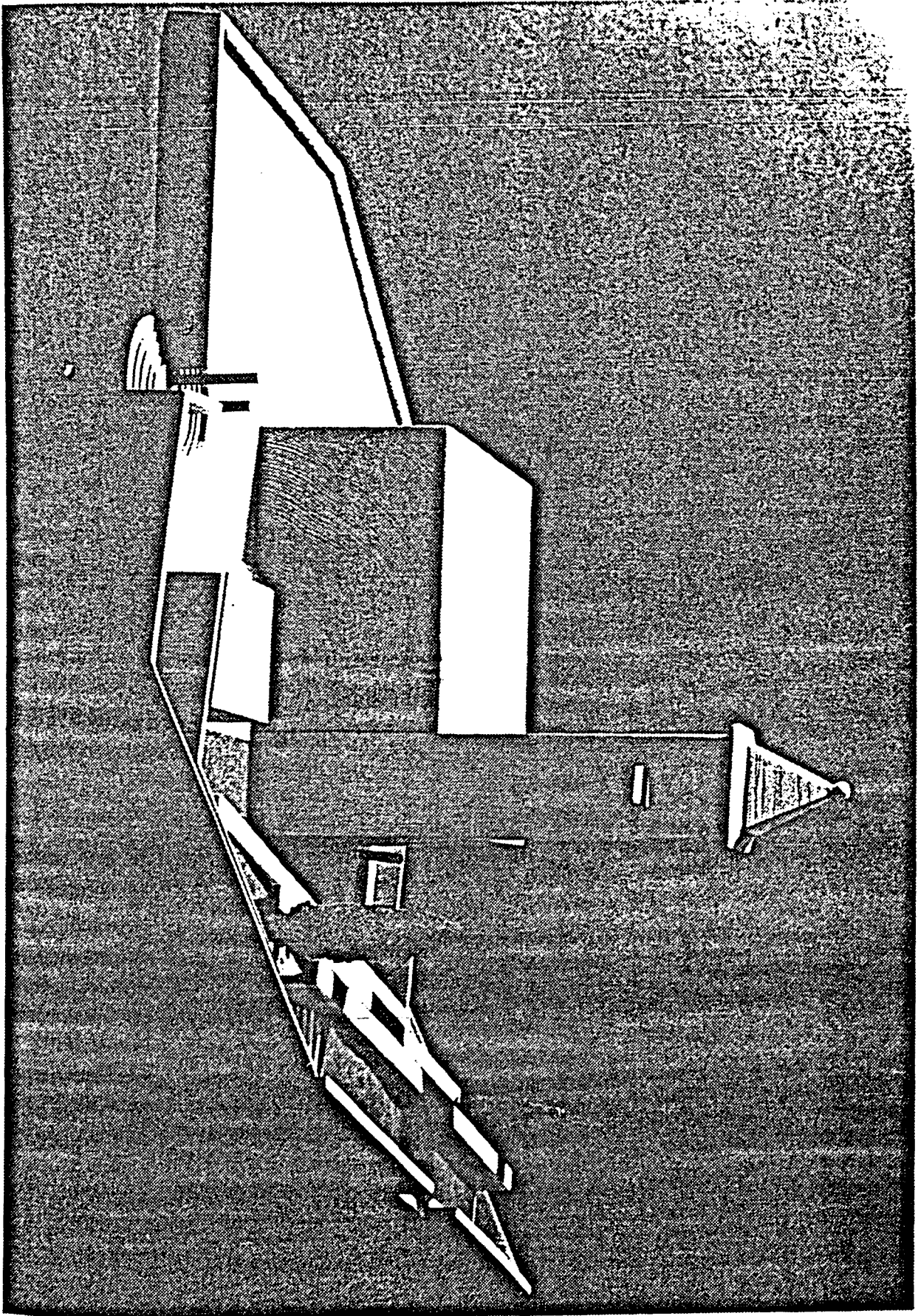


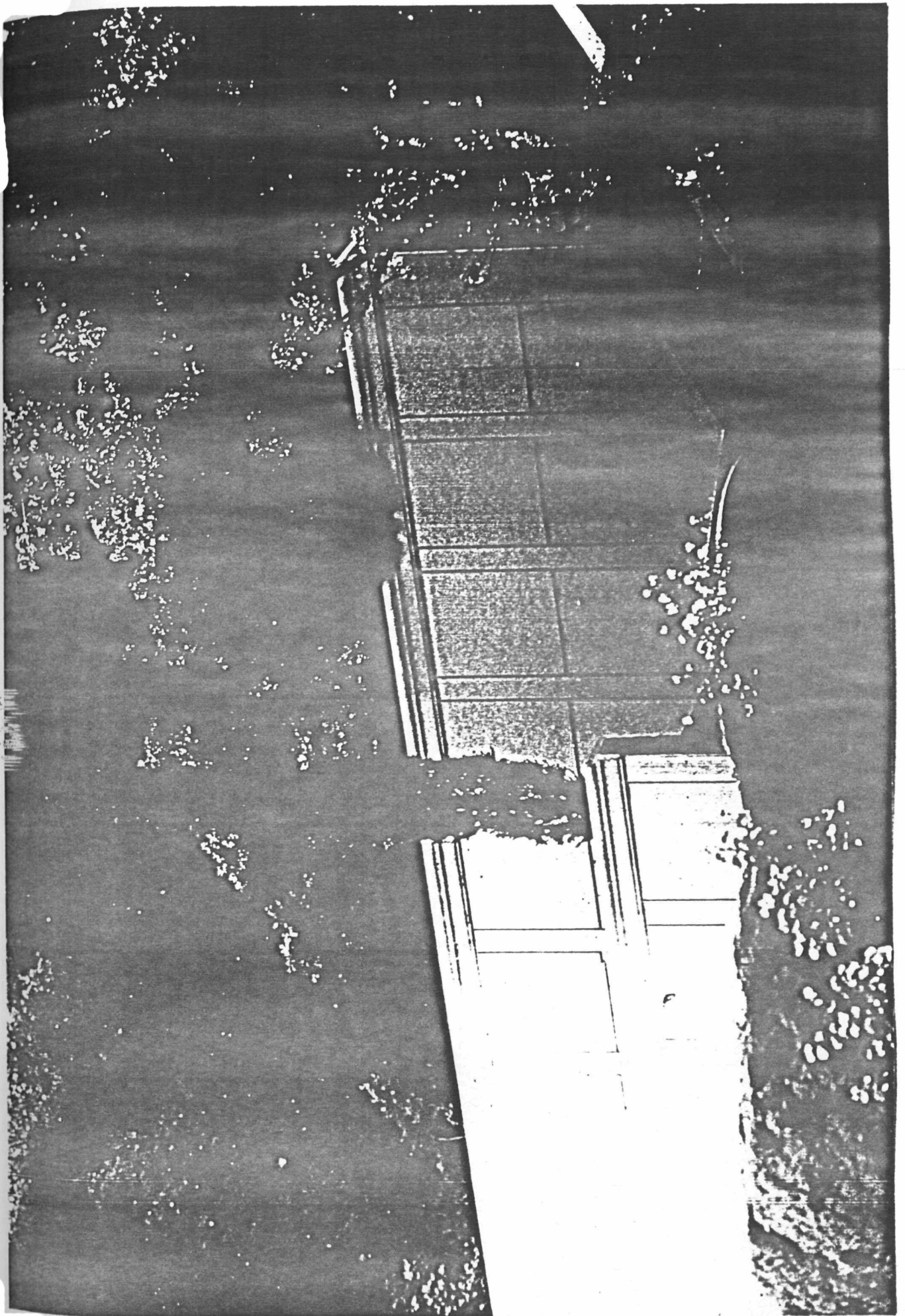
AA

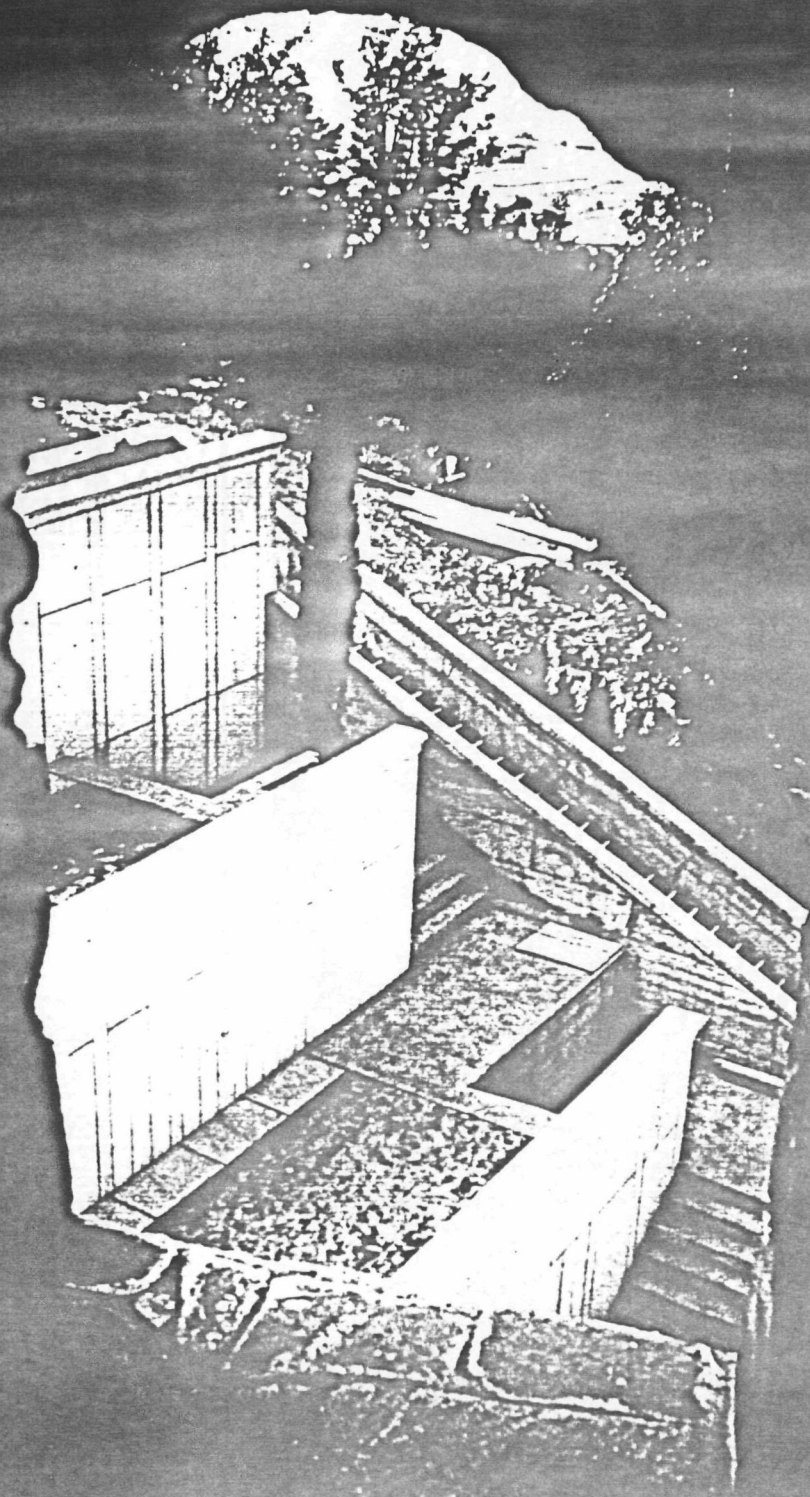


ALÇAT

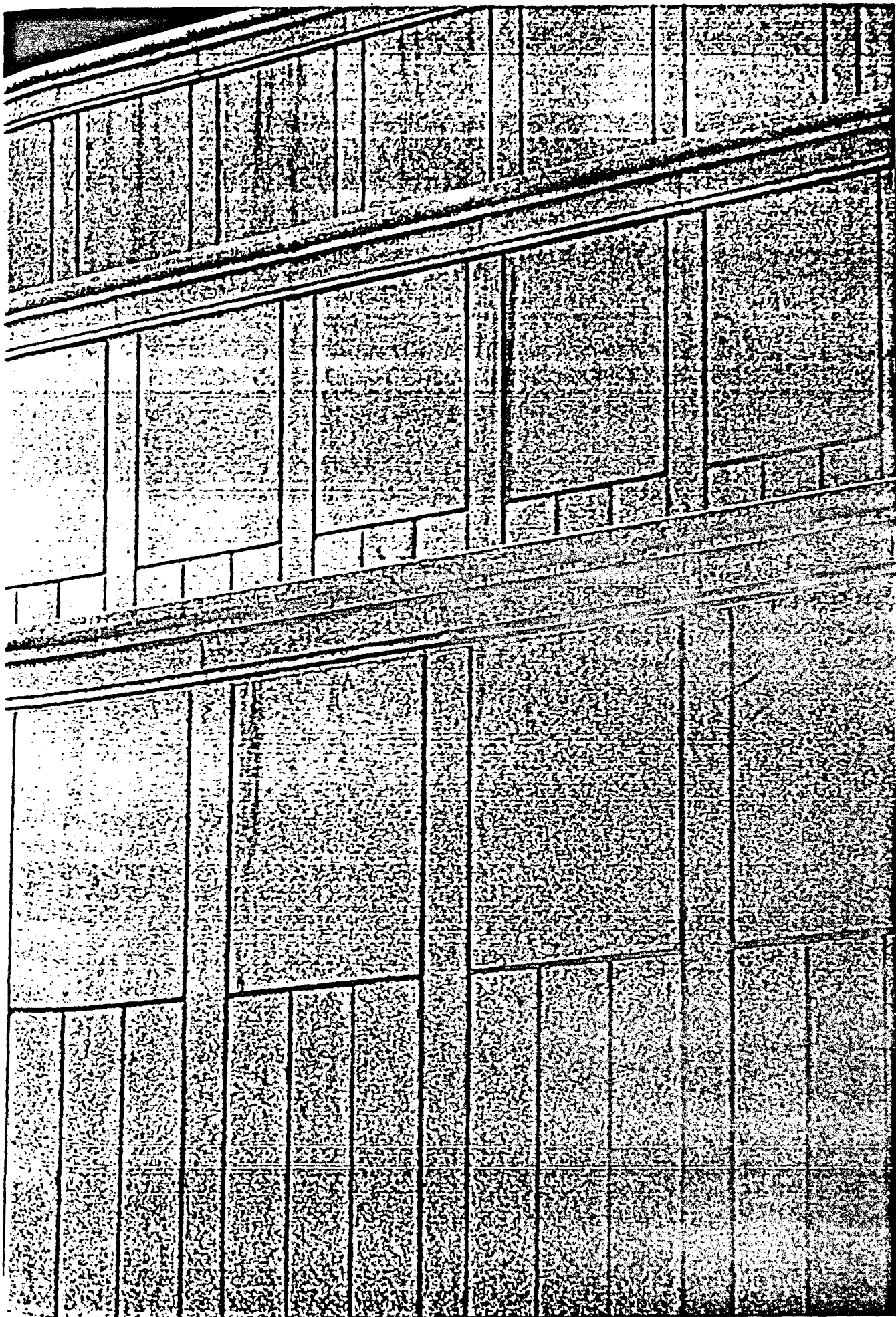




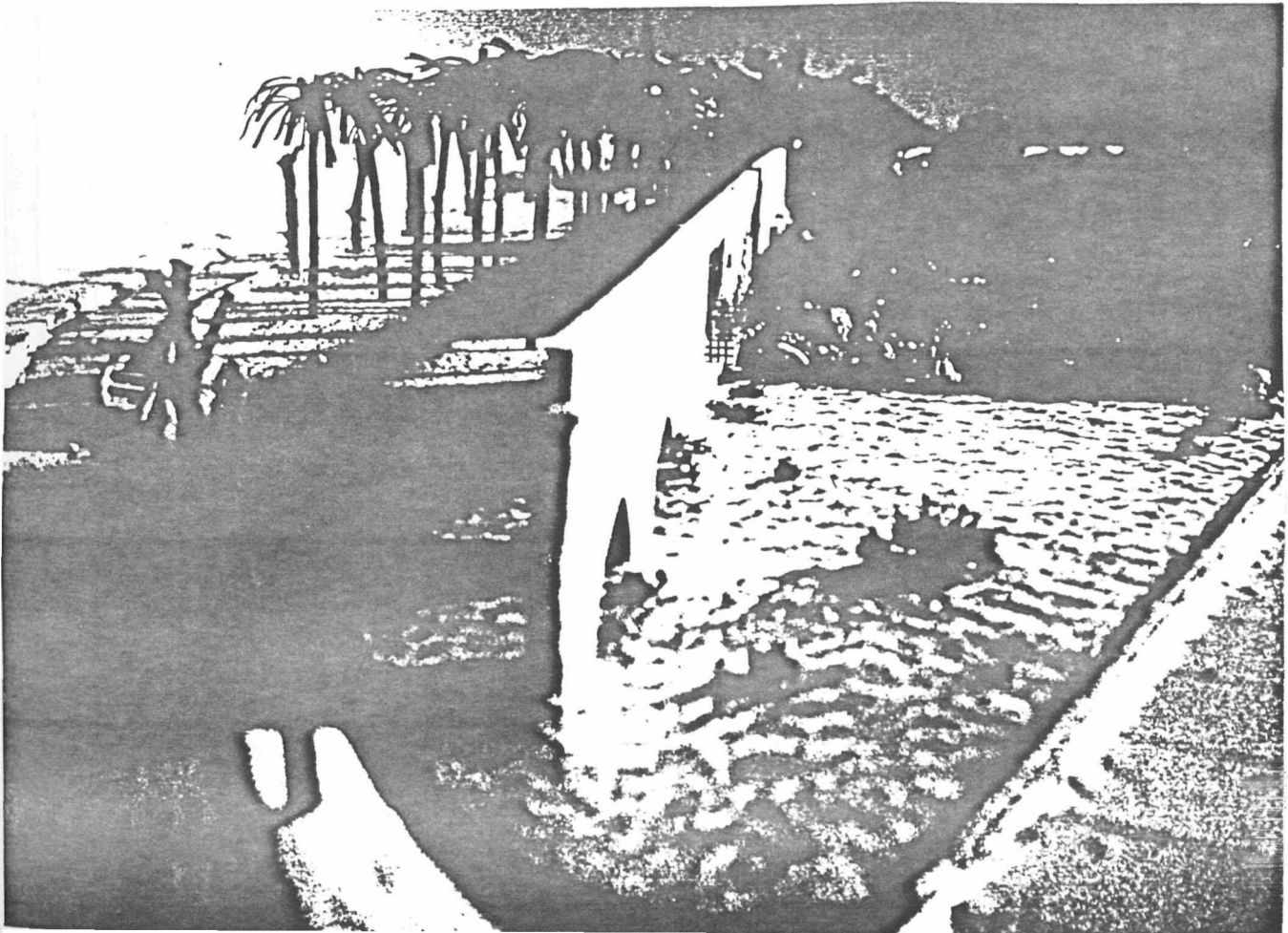


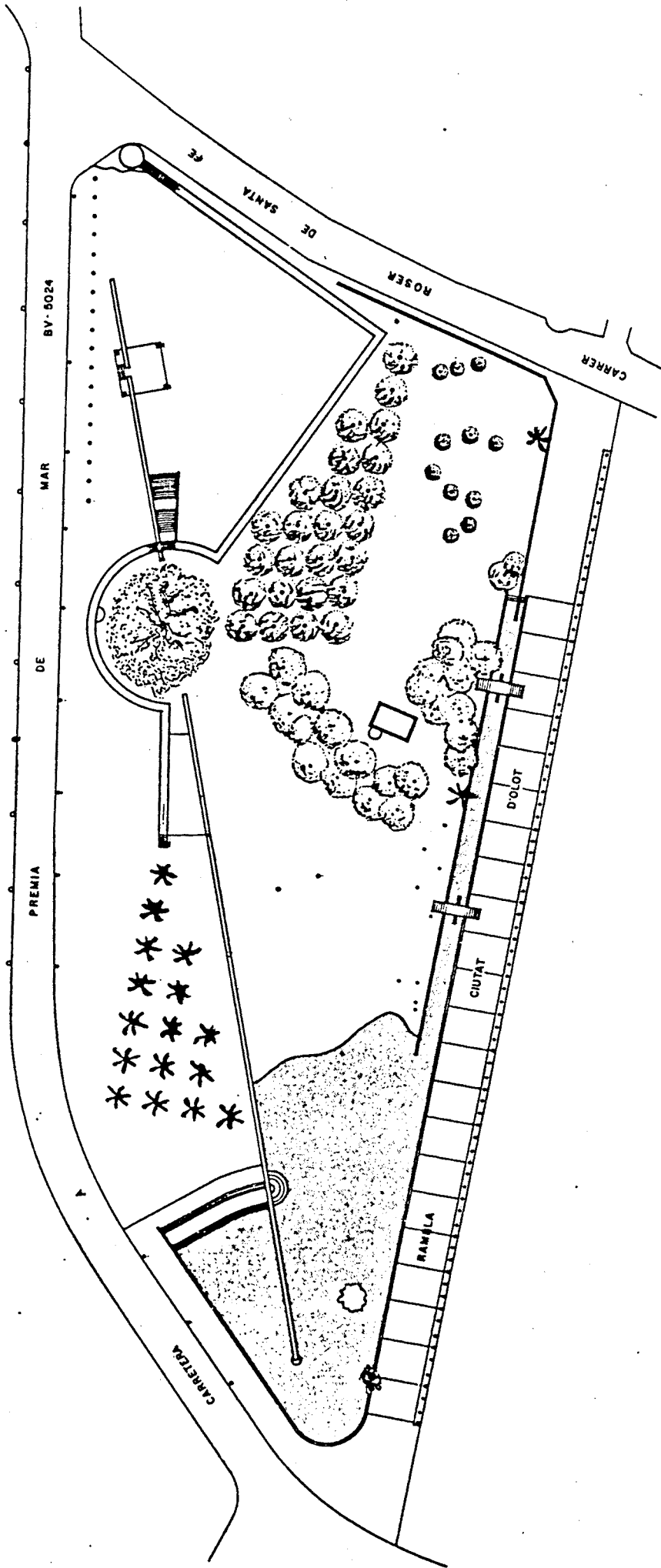






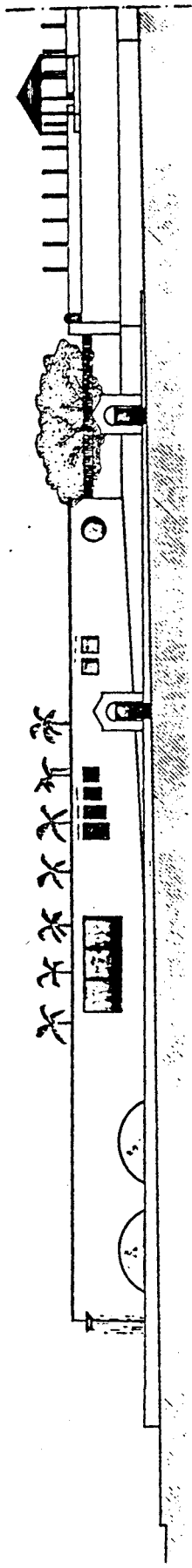
2. PARC CAN BLANCO. PREMIÀ DE DALT



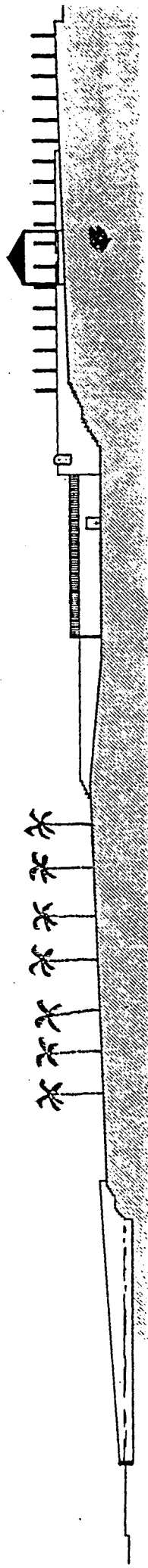


PLANTA

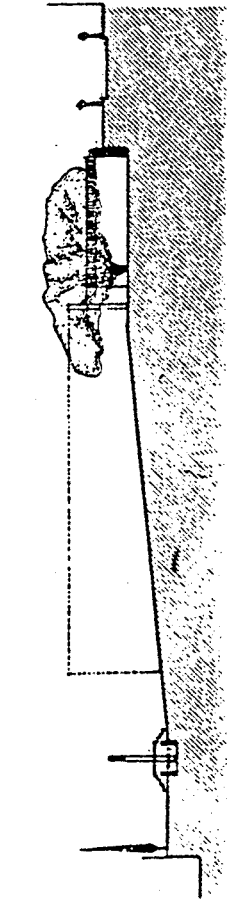




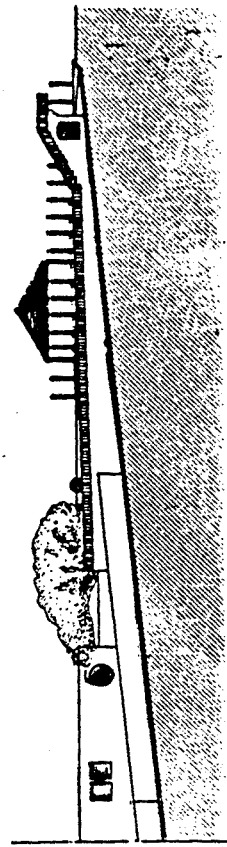
SECCIÓ PER A·A.



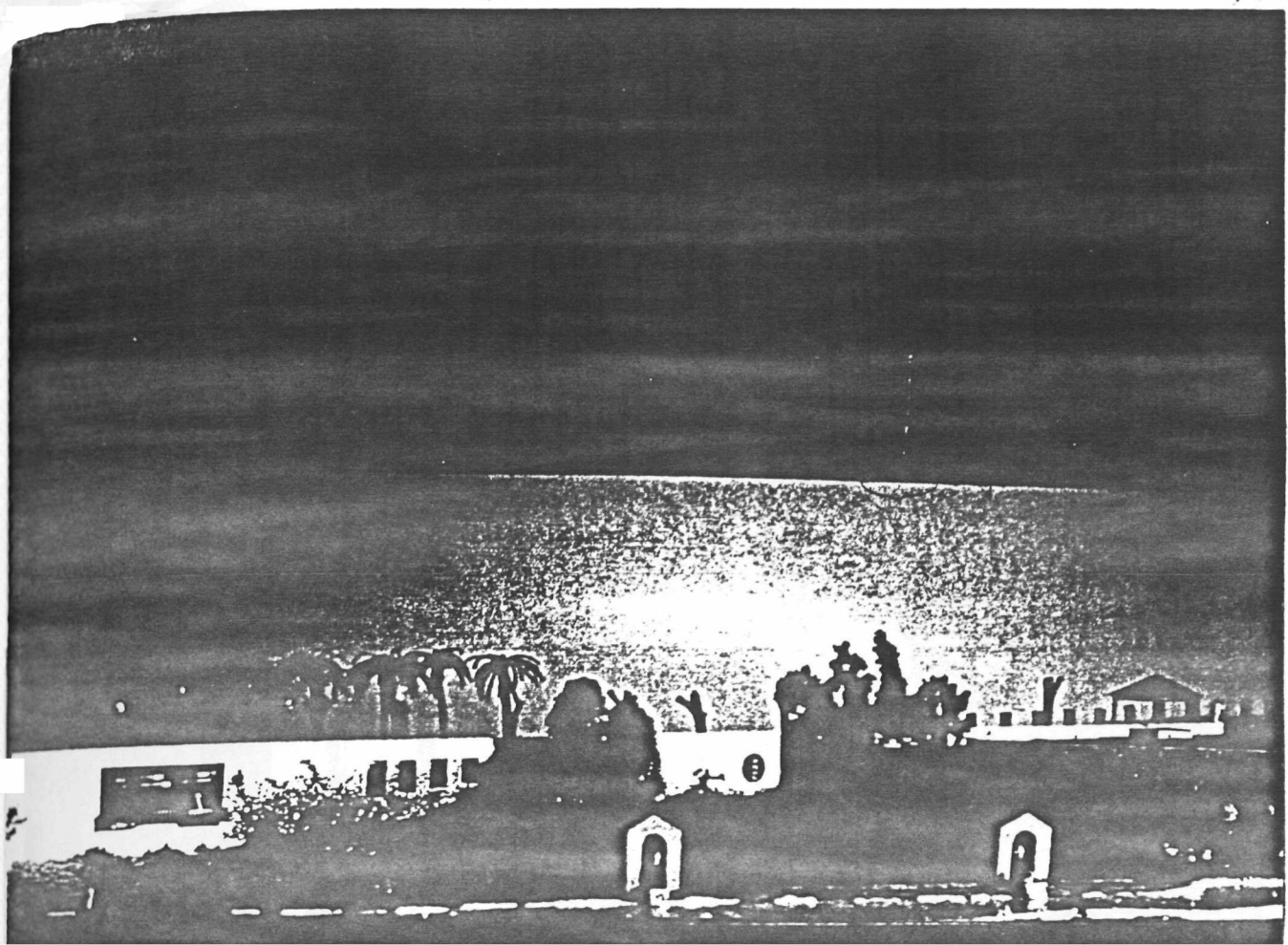
SECCIÓ PER B·B.



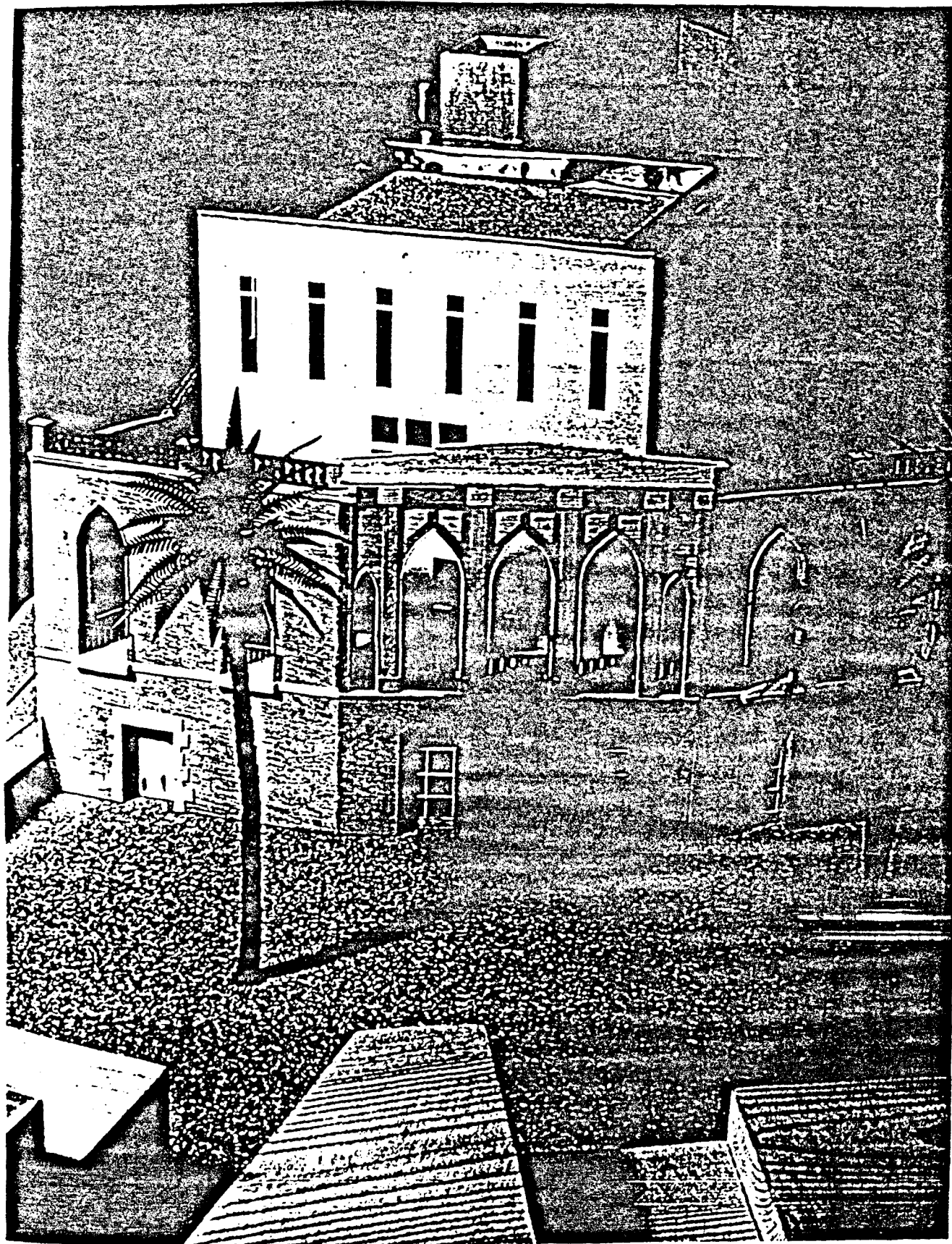
SECCIÓ PER C·C.



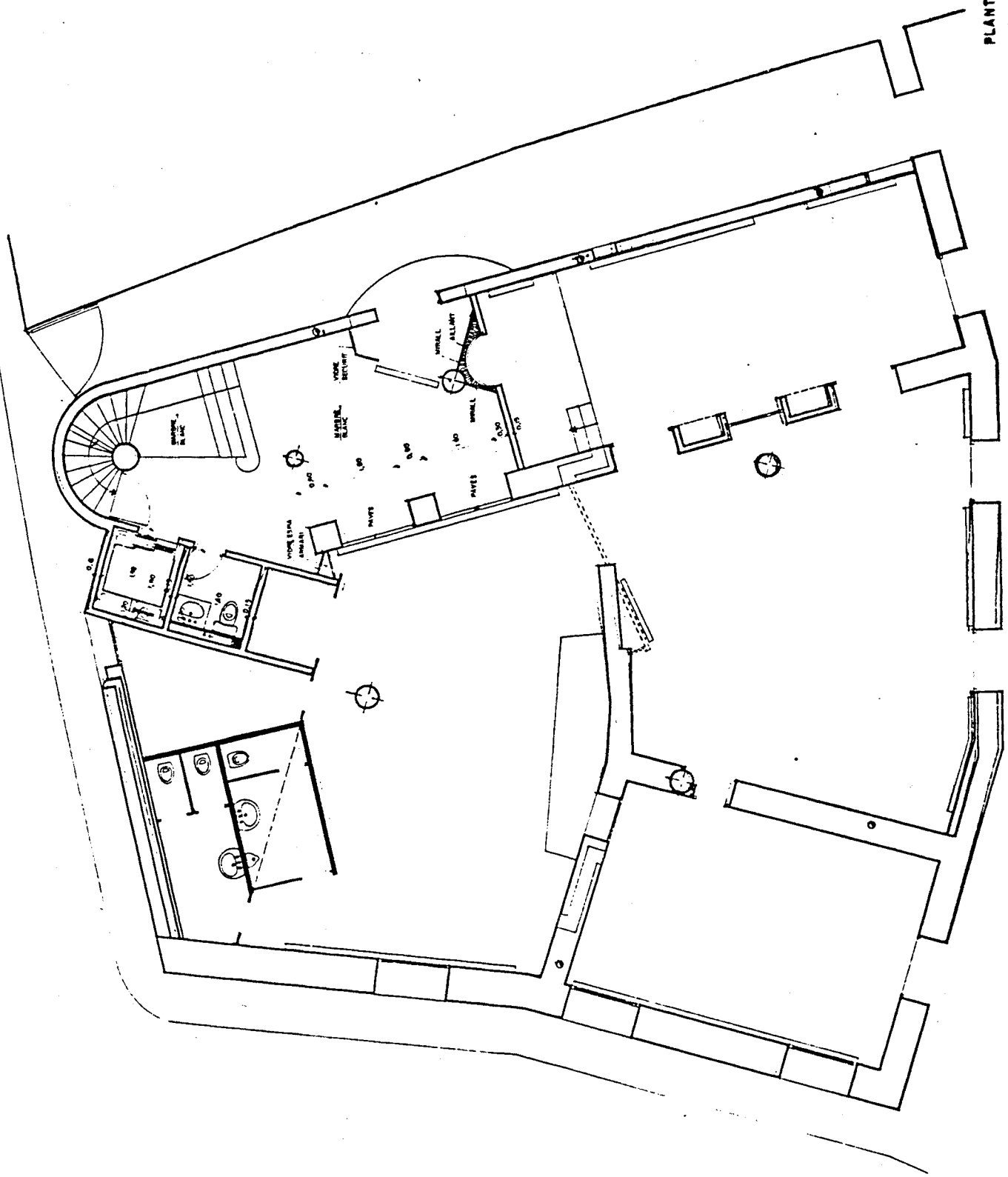
SECCIÓ PER D·D.



3. CASAL D'AVIS I MUSEU MUNICIPAL. EL MASNOU

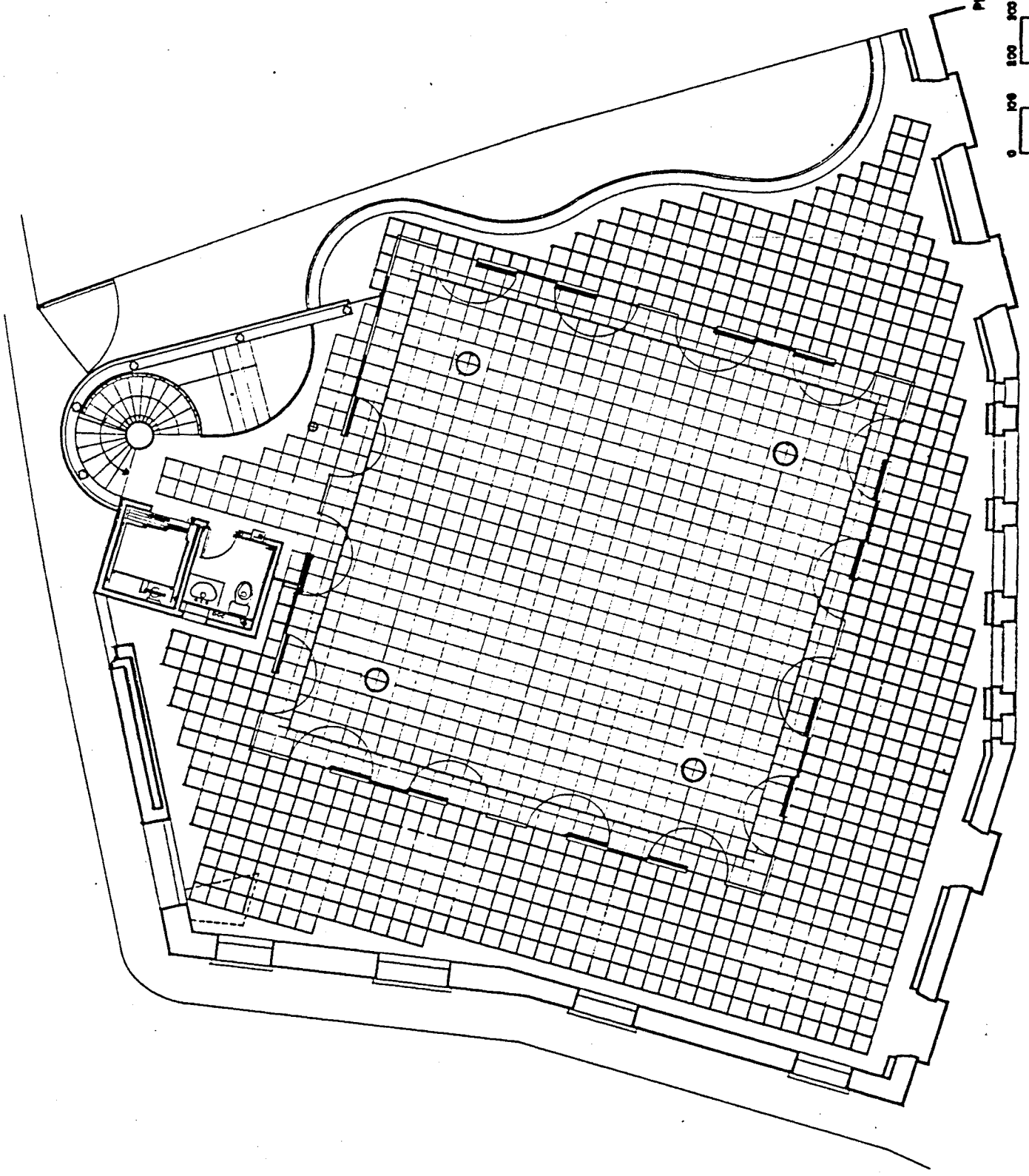


PLANTA BAIXA



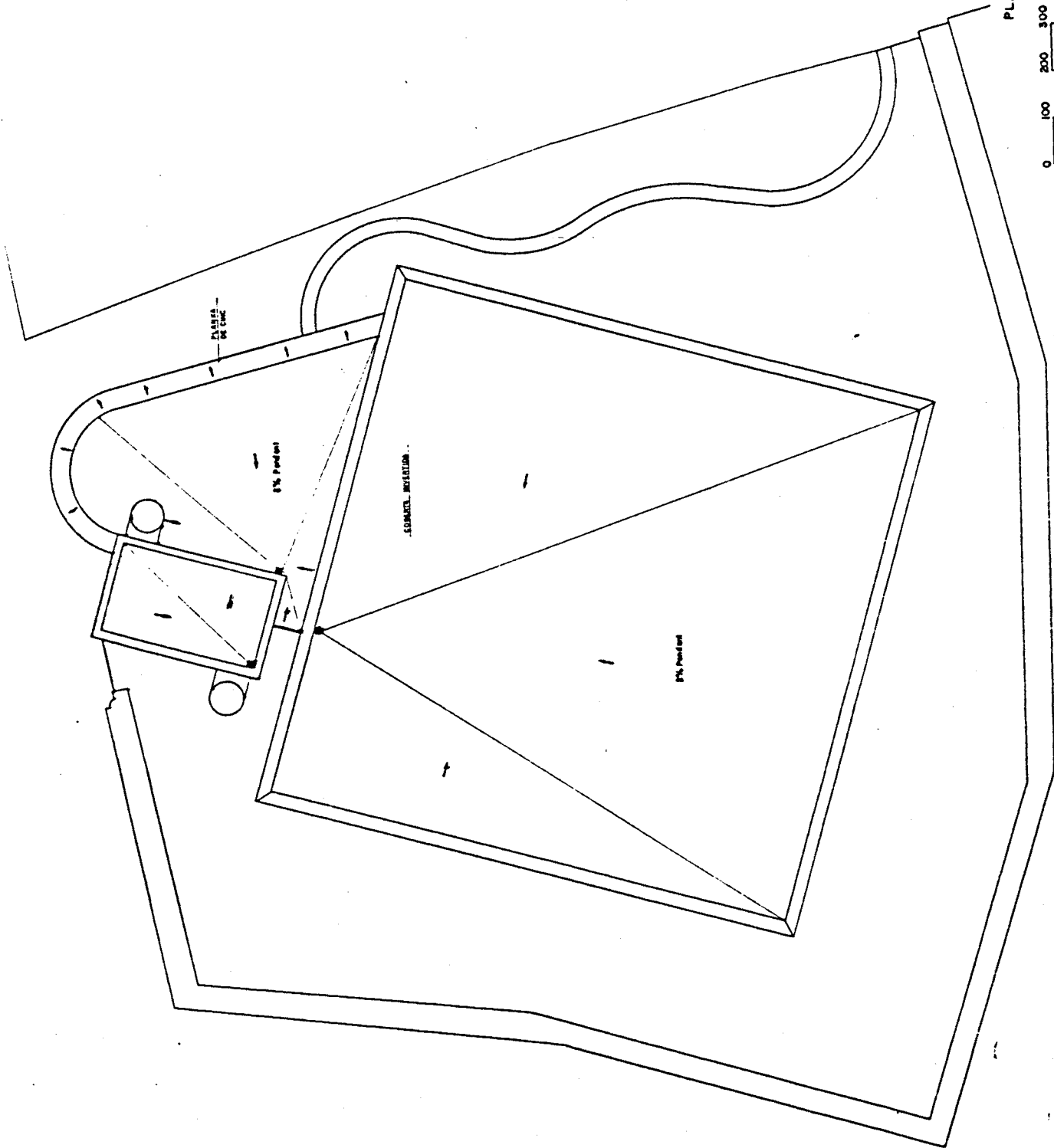
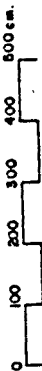


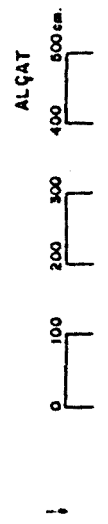
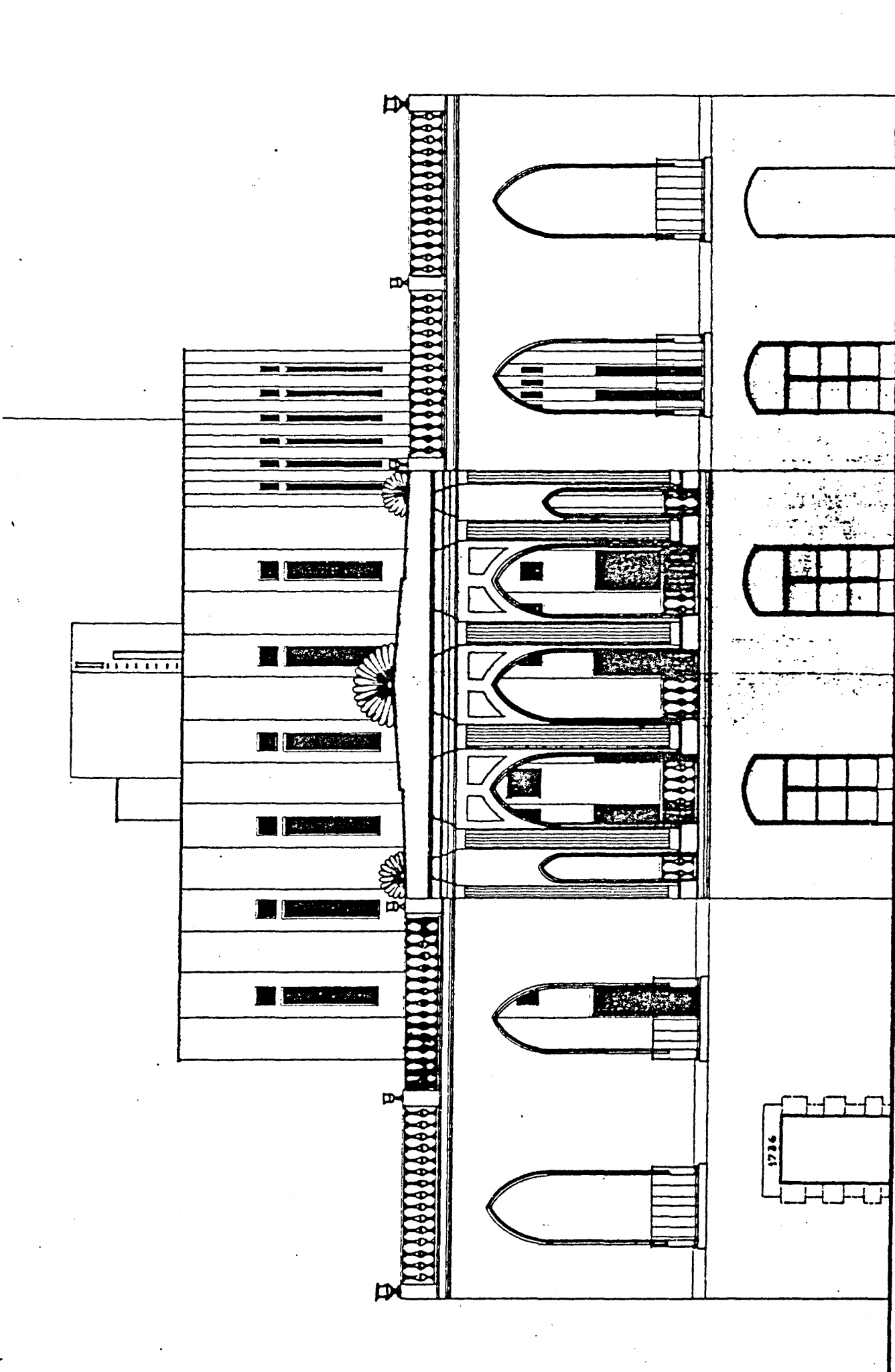
PLANTA PRIMERA



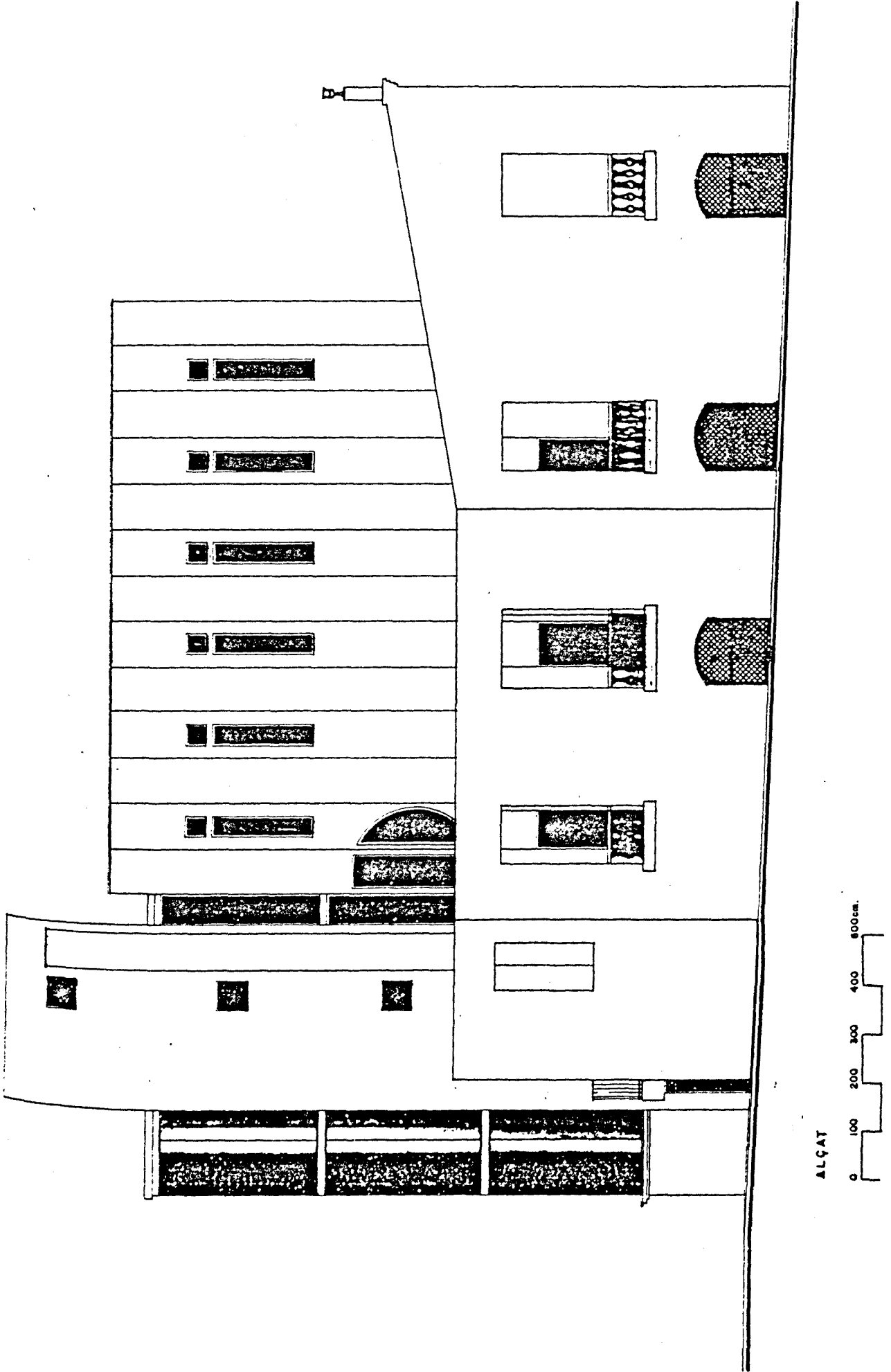


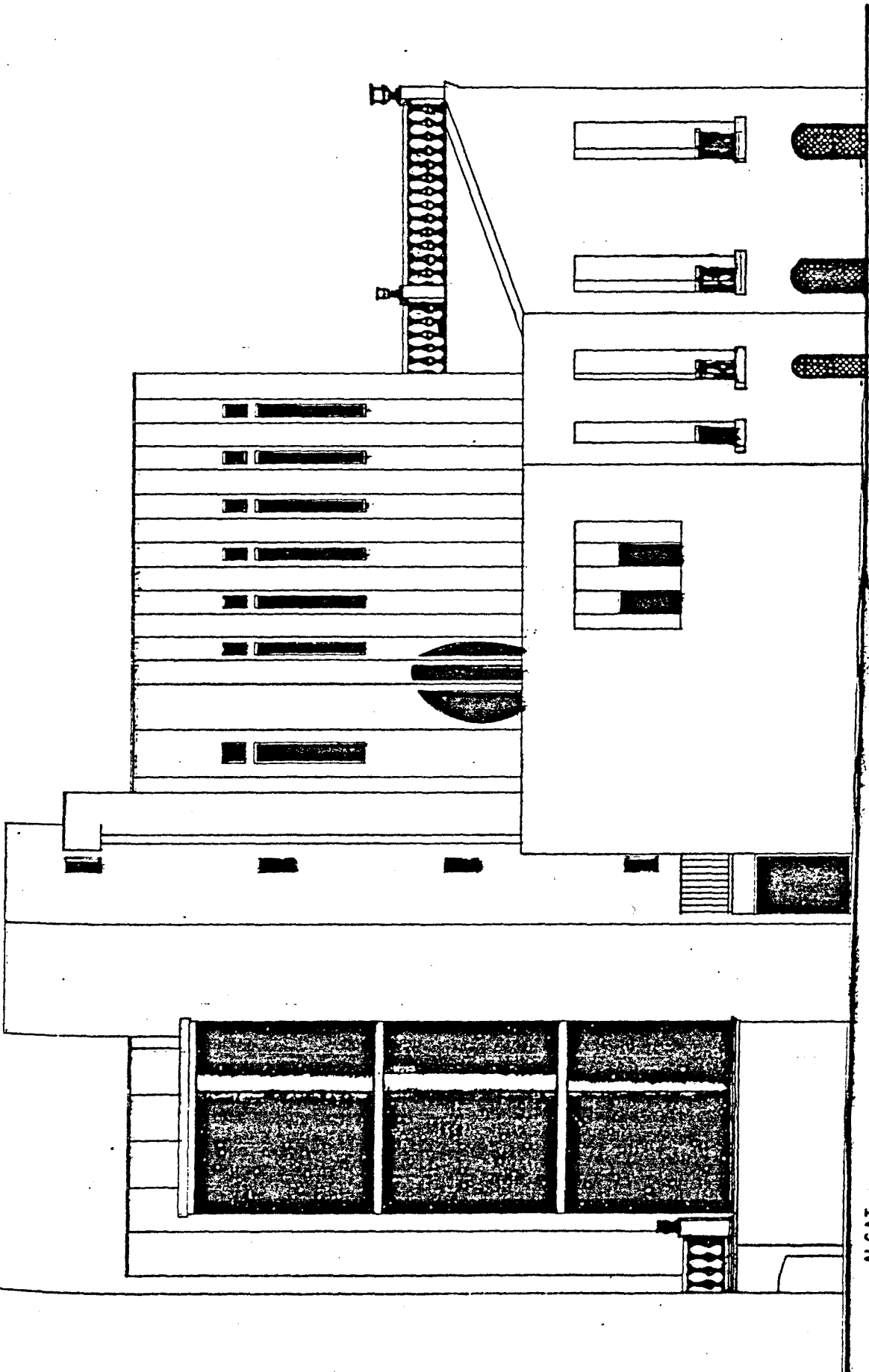
PLANTA COBERTA





1786





ALCAT
0 100 200 400 800

ALÇAT

0 100 200 300 400 500 cm.

