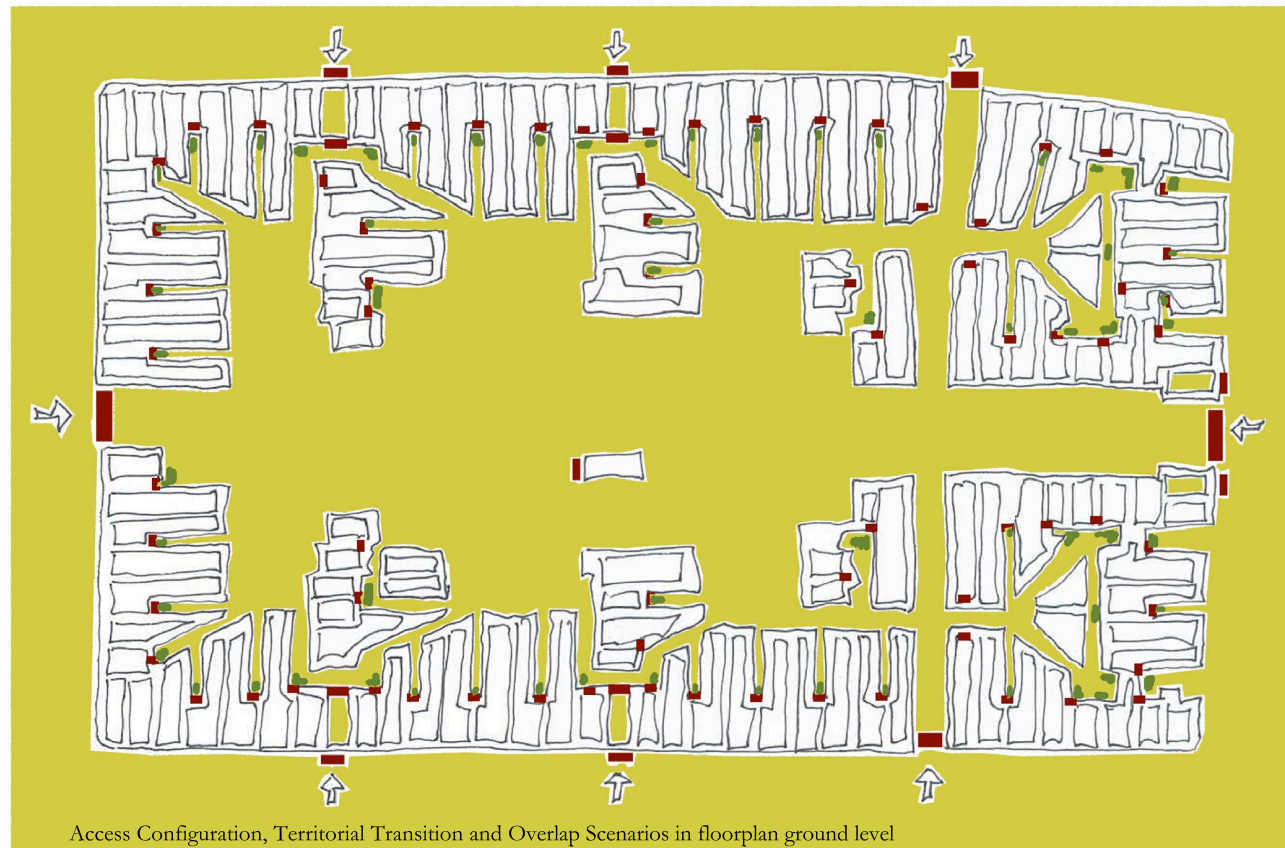


Kris Scheerlinck, doctoral candidate
 Universitat Ramon Llull, E.T.S.A. La Salle
 Barcelona, Spain, 2009-2010
Depth Configurations
 Proximity, Permeability and Territorial Boundaries in Urban Projects

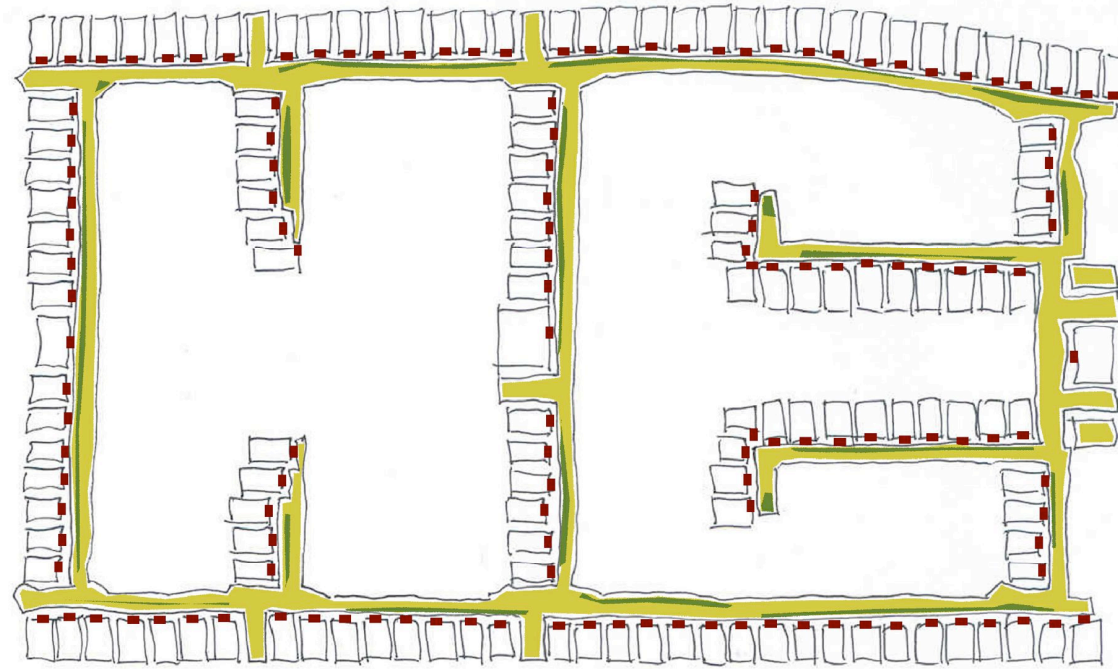
- territorial transition
- overlap scenarios
- sequential gaps
- territorial depth

Illustrating Case Study: Residential project by M. Brinkman, 1919-1920
 Site: Spangen, Rotterdam, Netherlands

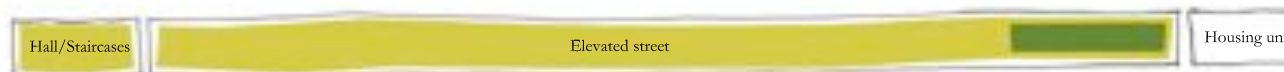
DEPTH AND ACCESS SCENARIOS
 base: original project plans/photographs



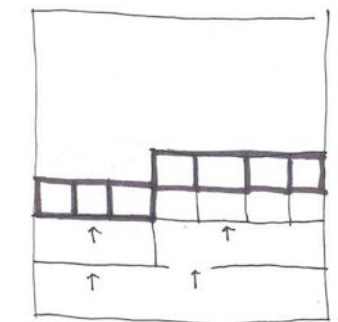
Access Configuration, Territorial Transition and Overlap Scenarios in floorplan ground level



Access Configuration, Territorial Transition and Overlap Scenarios in floorplan first level



Depth Diagrams in Territorial Configurations scenario elevated street



Territorial Depth Diagram



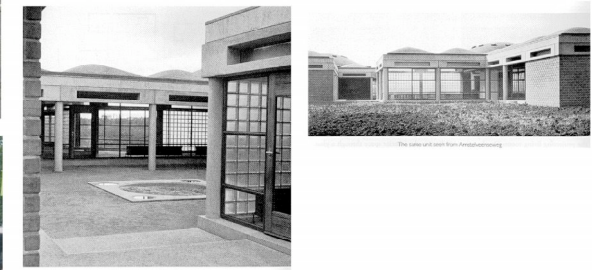
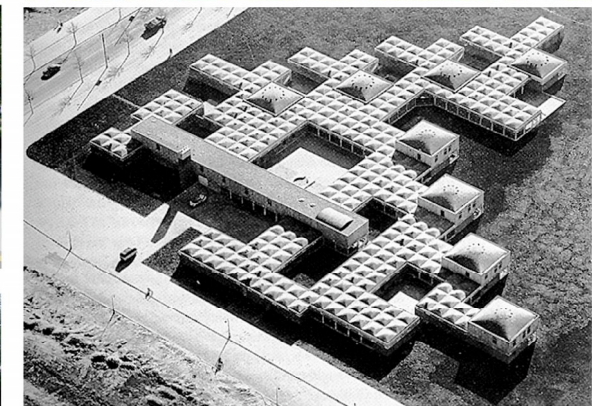
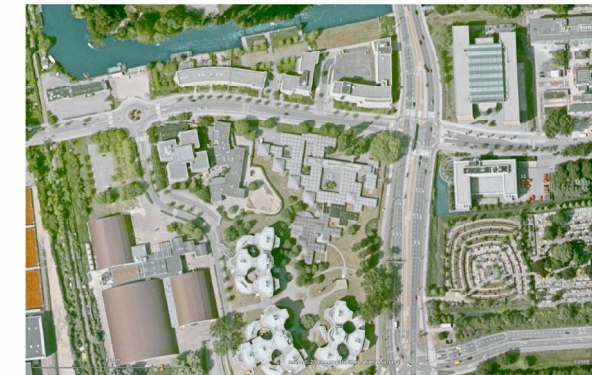
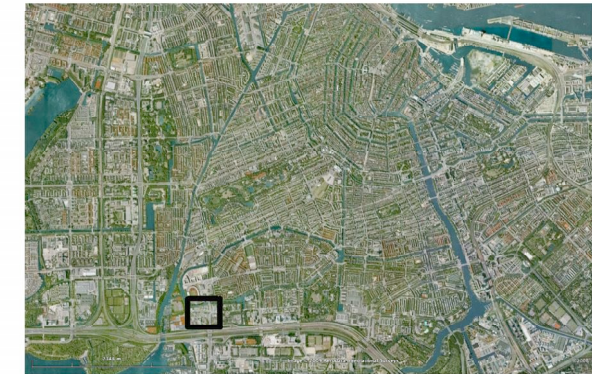
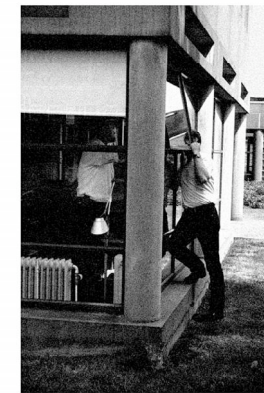
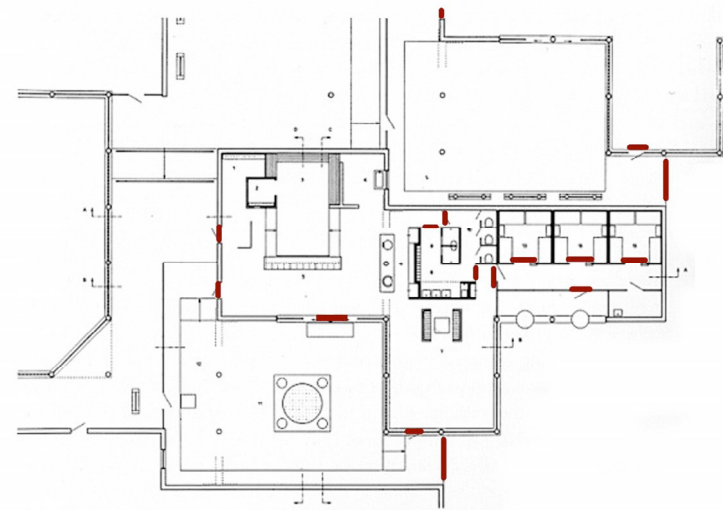
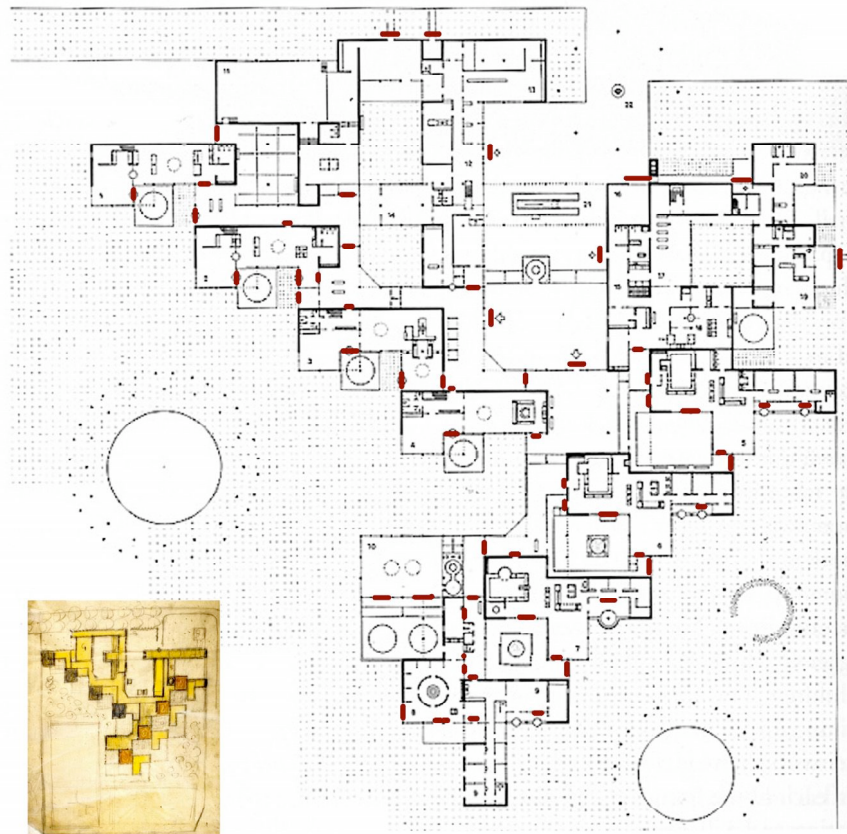
Territorial Configuration of general set-up

Kris Scheerlinck, doctoral candidate
 Universitat Ramon Llull, E.T.S.A. La Salle
 Barcelona, Spain, 2009-2010
Depth Configurations
 Proximity, Permeability and Territorial Boundaries in Urban Projects

territorial transition
 overlap scenarios
 sequential gaps
 territorial depth

Illustrating Case Study: Residential project by M. Brinkman, 1919-1920
 Site: Spangen, Rotterdam, Netherlands

DEPTH AND ACCESS SCENARIOS
 base: original project plans/photographs



Kris Scheerlinck, doctoral candidate
 Universitat Ramon Llull, E.T.S.A. La Salle
 Barcelona, Spain, 2009-2010
Depth Configurations
 Proximity, Permeability and Territorial Boundaries in Urban Projects

- territorial transition
- overlap scenarios
- sequential gaps
- territorial depth

Illustrating Case Study: A. Van Eyck, Orphanage, 1955-1960.
 Site: Amsterdam, Netherlands

DEPTH AND ACCESS SCENARIOS
 ref.: F. Strauven "Aldo Van Eyck: Shaping..." archive CCA